



Mho Distance Relay

Type GCY

Model GCY51C(-)A

Introduction

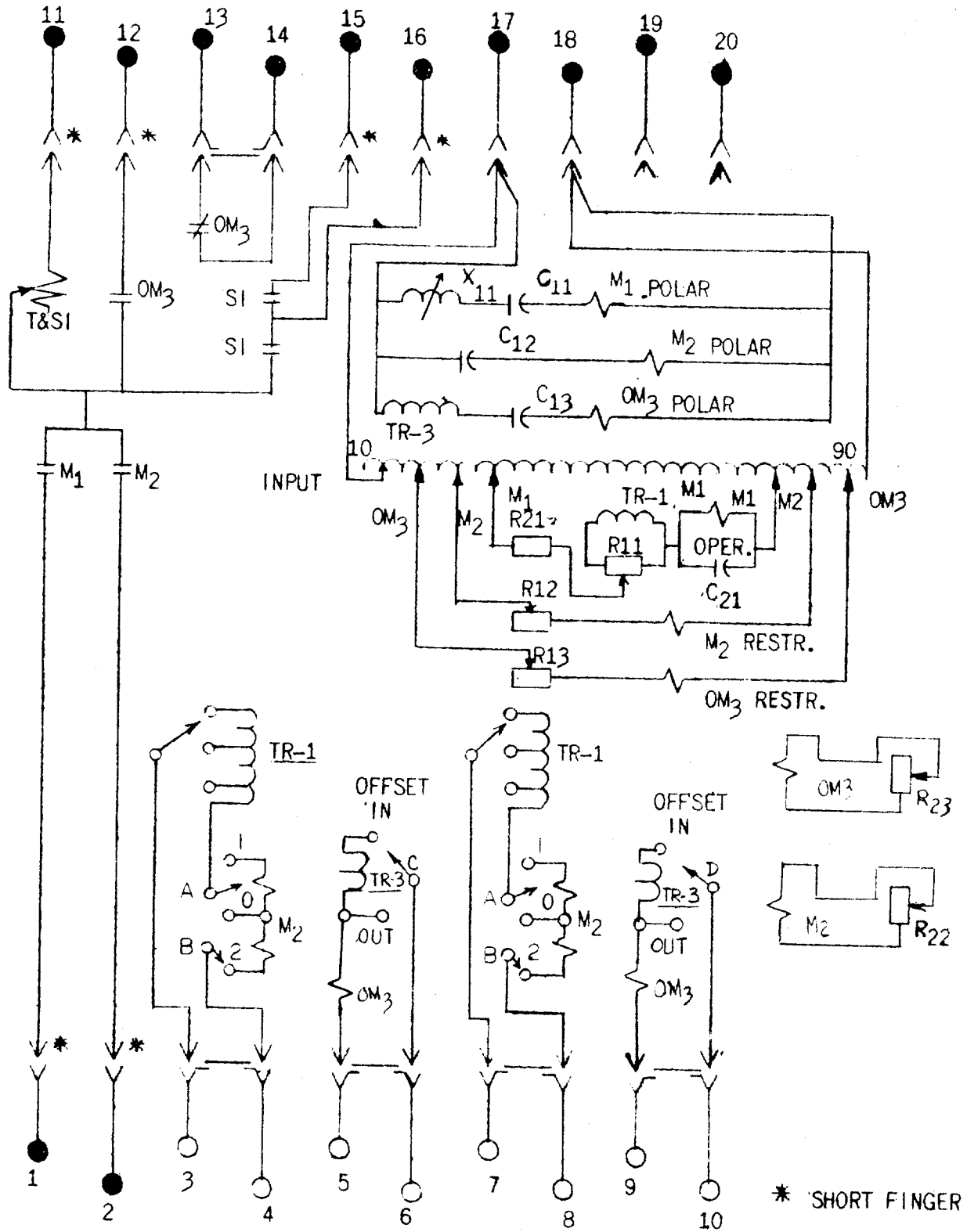
This insert booklet and the GCY51A(-)A Instruction Book (GEI-98338) form the instructions for the GCY51C(-)A relay.

Description

The GCY51C relay is similar to the GCY51A relay except for the wiring changes made on the internal connections diagram 0178A9098 as shown in figure 1 of this booklet.

1. The polarizing and restraint circuits are connected in parallel across studs 17 and 18.
2. Wiring to the OM₃ current circuits on studs 5 and 6 and studs 9 and 10 were reversed so with the standard GCY51A connections to the OM₃ will reach in the reverse direction. This is illustrated in figure 18 (0178A8183-0), page 17 of the GCY51A(-)A instruction book (GEI-98338).

These instructions do not purport to cover all details or variations in equipment nor to provide for every possible contingency to be met in connection with installation, operation or maintenance. Should further information be desired or should particular problems arise which are not covered sufficiently for the purchaser's purposes, the matter should be referred to the General Electric Company.



*Figure 1 (0178A9098 [3]) Internal Connection Diagram for the GCY51C Relay (Front View)

ST-10/93 (200) GENERAL ELECTRIC METER & CONTROL, GREAT VALLEY PARKWAY, MALVERN, PA 19355

* Indicates Revision