



INSTRUCTIONS

GEI-33891C
SUPERSEDES GEI-33891B

POWER DIRECTIONAL RELAY

TYPE GGP53B

POWER SYSTEMS MANAGEMENT DEPARTMENT

GENERAL  ELECTRIC

PHILADELPHIA, PA.

CONTENTS

	<u>PAGE</u>
INTRODUCTION.....	5
APPLICATION.....	5
CALCULATION OF SETTINGS.....	6
RATINGS.....	6
BURDENS.....	7
RECEIVING, HANDLING AND STORAGE.....	7
DESCRIPTION.....	7
DIRECTIONAL UNIT.....	7
TIME OVERVOLTAGE UNIT.....	8
TARGET AND SEAL-IN UNIT.....	8
LOCATION.....	8
MOUNTING.....	8
CONNECTIONS.....	8
INSPECTION.....	8
FIELD INSTALLATION TESTS.....	8
POLARITY.....	9
TARGET AND SEAL-IN ELEMENT.....	9
TIME SETTING.....	9
PICKUP.....	9
CLUTCH.....	10
MAINTENANCE.....	10
PERIODIC TEST AND INSPECTION.....	10
SERVICING.....	10
CONTACT CLEANING.....	11
RECALIBRATION.....	11
BIAS.....	11
MAXIMUM ANGLE OF TORQUE.....	11
CLUTCH.....	11
PICK UP (LOWER UNIT).....	11
HOLDING COIL.....	11
PICK UP (UPPER UNIT).....	12
TIME TEST (UPPER UNIT).....	12
RENEWAL PARTS.....	12

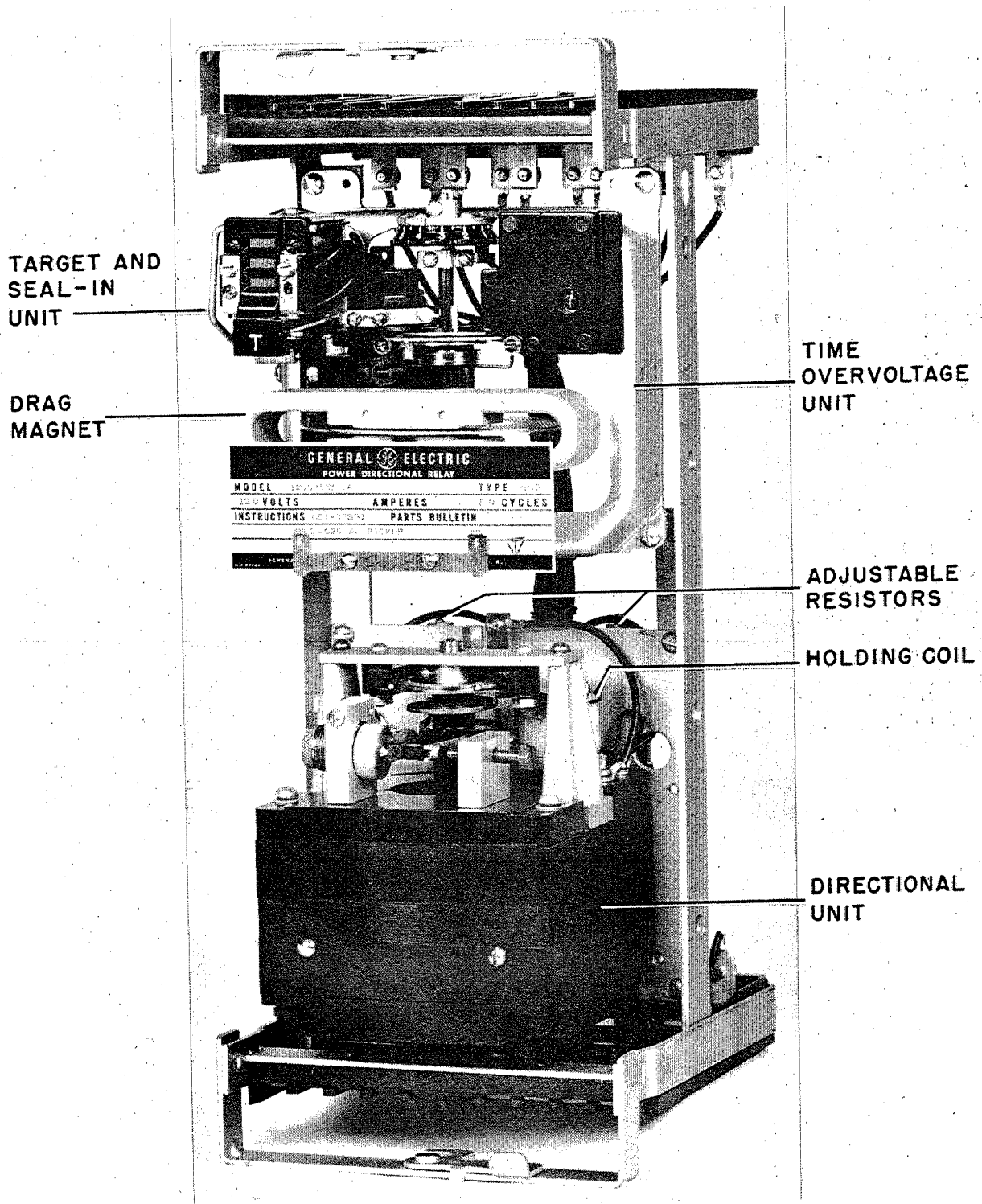


FIG. 1 (8024961) TYPE GGP53B RELAY REMOVED FROM CASE (FRONT VIEW)

POWER DIRECTIONAL RELAY

TYPE GGP53B

INTRODUCTION

The Type GGP53B is a three phase power directional relay. It consists of one eight pole induction cup power directional unit and an induction disk a-c operated timing unit. This relay is designed specifically for use in protecting against motoring of a generator upon the loss of its prime mover power. The relay is furnished in a size M2 case and it has a target-seal in device. One relay per generator is required.

APPLICATION

While the GGP53B relay may be employed whenever reverse power, time delay operation is required, its major field of application is the protection of generators against motoring. Because of its extreme sensitivity, the GGP53B is almost universally applicable for this function. However, in many instances, the motoring power taken by the generator is so large that the sensitivity of the GGP53B is not required and a less sensitive relay may be applied.

The following table lists the appropriate motoring power taken by the various types of generators.

TYPE OF PRIME POWER	MOTORING POWER IN PERCENT OF UNIT RATING
Gas Turbine - Single Shaft	100
Gas Turbine - Double Shaft	10 - 15
4 Cycle Diesel	15
2 Cycle Diesel	25
Hydraulic Turbine	2 - 100*
Steam Turbine (conventional)	1 - 4
Steam Turbine (Cond. Cooled)	0.5 - 1.0

* The larger powers are taken by turbines having submerged impellers.

When the generator starts to motor, the directional unit closes its contacts and energizes the coil of the time delay unit. The time delay unit then starts to time out. If the generator continues to motor long enough for the time delay unit to time out, the generator breaker is tripped. If the prime mover starts to drive the generator before the time delay unit has timed out, the directional unit will open its contacts and the time delay unit will reset. The time delay setting is adjustable over the range of 1.5 to 30 seconds at rated voltage. The time delay is determined by the time dial setting.

The directional unit has maximum torque when the current is at unity power factor. The directional unit therefore operates on the watt component of the current flowing into the generator. The directional unit will close if the primary KW into the generator is more than the following:

$$\text{Primary KW} = 0.0052 \times \text{CT Ratio} \times \text{PT Ratio}$$

With the CT ratio such that generator full load current is between 5 and 2.5 secondary amperes, the Type GGP53B relay will operate when the power flows into the generator is between 0.5 to 1.0 percent of the generator nameplate rating in KW.

The relay directional unit potential circuits must be connected to receive phase to phase voltage.

These instructions do not purport to cover all details or variations in equipment nor to provide for every possible contingency to be met in connection with installation, operation or maintenance. Should further information be desired or should particular problems arise which are not covered sufficiently for the purchaser's purposes, the matter should be referred to the General Electric Company.

If potential transformers are such as to supply 120 volts phase to phase, then the potential circuit should be rated 120 volts. If the potential transformers are such as to supply 120 volts phase to neutral, the potential circuit should be rated 208 volts.

When the GGP53B relay is used to protect a unit against motoring, the external connections shown in Fig. 3 should be employed. In every case, calculations should be made to insure that the motoring power taken by the generator, on loss of the prime mover, exceeds the minimum pickup of the relay. A sample calculation is provided under CALCULATIONS OF SETTINGS.

CALCULATIONS OF SETTINGS

Following is a sample calculation of the relay setting check.

Consider a steam turbine driven generator with the following rating

18.0 KV
192,000 KVA

Assume that it is desired to provide motoring protection for this unit. On the basis of the above rating, the full load current of this unit would be

$$I_{FL} = \frac{192,000}{18\sqrt{3}} = 6,150 \text{ primary amperes.}$$

Assume a CT ratio of 8,000/5 and a PT ratio of 18,600/120. Assume further that the manufacturer of the unit advises that the motoring power taken by the machine at rated speed will be 4,000 KW. At rated voltage this represents an in-phase component of current

$$I_M = \frac{4,000}{18\sqrt{3}} = 128 \text{ primary amperes.}$$

or

$$I_M = \frac{128}{8,000} \times 5 = 0.08 \text{ secondary amperes.}$$

The GGP53B relay has a minimum pickup of 0.025 in-phase amperes at rated volts adjustable to 0.3 amperes maximum. Since the rated voltage of the machine (18,000 volts) is somewhat lower than that of the associated PT's (18,600 volts), the PT secondary voltage at rated machine voltage will be

$$\frac{18,000}{18,600} \times 120 = 116 \text{ volts.}$$

At 116 volts the GGP53B relay will require

$$\frac{120}{116} (0.025) = 0.026 \text{ secondary amperes.}$$

to pick up.

Since the in-phase component of the motoring current of the machine exceeds the relay pick-up current, this is a good application.

It is important to note that the time delay setting employed should be long enough to override momentary power reversals during synchronizing and system swings.

RATINGS

Type GGP53B relays are available with potential coils rated at 120 volts or 208 volts and current coils rated at 5 amperes.

The current closing rating of the contacts is 30 amperes for voltages not exceeding 250 volts. The current carrying ratings are affected by the selection of the tap on the seal-in coil as indicated in the following table:

	Amperes, AC or DC	
	Target and Seal-in Coil Tap	
	2-Amp (0.13 ohms)	0.2-Amp (7 ohms)
Tripping Duty	30	5
Carry Continuously	3	0.3

The tap setting used on the seal-in unit is determined by the current drawn by the trip coil. The 0.2 ampere tap is for use with trip coils that operate on currents ranging from 0.2 up to 2 amperes at the minimum control voltage. If this tap is used with trip coils requiring more than two amperes, there is a possibility that the seven ohms resistance will reduce the current to so low a value that the breaker will not be tripped.

The 2.0 ampere tap should be used with trip coils that take 2.0 amperes or more at minimum control voltage, provided the tripping current does not exceed 30 amperes at the maximum voltage. If the tripping current exceeds 30 amperes, an auxiliary relay should be used, the connections being such that the tripping current does not pass through the contacts or the target seal-in coil of the protective relay.

BURDENS

The burdens of the current circuits at 5 amperes, 60 cycles are as follows:

TERMINALS	VA	WATTS	P.F.
3-4 or 5-6	3.6	1.8	0.50
7-8	7.2	3.6	0.50

The burdens of the potential circuits at 120 or 208 volts, 60 cycles are as follows:

TERMINALS	VA	WATTS	P.F.
2-12	20.3	7.8	0.38
13-14	5.0	2.5	0.50
15-16	5.0	2.5	0.50
17-18	5.0	2.5	0.50
19-20	5.0	2.5	0.50

RECEIVING, HANDLING AND STORAGE

These relays, when not included as a part of a control panel will be shipped in cartons designed to protect them against damage. Immediately upon receipt of a relay, examine it for any damage sustained in transit. If injury or damage resulting from rough handling is evident, file a damage claim at once with the transportation company and promptly notify the nearest General Electric Apparatus Sales Office.

Reasonable care should be exercised in unpacking the relay in order that none of the parts are injured or the adjustments disturbed.

If the relays are not to be installed immediately, they should be stored in their original cartons in a place that is free from moisture, dust, and metallic chips. Foreign matter collected on the outside of the case may find its way inside when the cover is removed and cause trouble in the operation of the relay.

DESCRIPTION

Type GGP53B relay consists of an time-delay overvoltage unit (upper) a three phase directional unit (lower) and a target and seal-in unit.

DIRECTIONAL UNIT

The three-phase directional unit is of the induction-cylinder construction. The principle by which torque is developed is the same as that employed in an induction-disk relay with a watt-hour meter element, though in arrangement of parts the relay is more like a split-phase induction motor.

The holding coil is connected in series with contacts of the lower unit.

Included in the construction of the lower assembly is the stator which has eight laminated magnetic poles projecting inward and arranged symmetrically around a central magnetic core. The poles are fitted with current and potential coils. In the annular air gap between the poles and central core is the cylindrical part of the cup-like aluminum rotor, which turns freely in the air gap. The central core is fixed to the stator frame; the aluminum cup alone turns.

This construction provides higher torque and lower rotor inertia than the induction-disk construction, making this relay faster and more sensitive.

TIME OVERVOLTAGE UNIT

The time delay overvoltage unit is of the induction-disk construction: A potential operating coil on a laminated U-magnet actuates the disk. The disk shaft carries the moving contact which completes the trip or alarm circuit when it touches the stationary contact or contacts. To give the proper contact closing voltage, the disk shaft is restrained by a spiral spring, and its motion is retarded by a permanent magnet acting on the disk to give the correct time delay.

TARGET AND SEAL-IN UNIT

A seal-in unit is mounted to the left of the disk shaft. This unit has its coil in series and its contacts in parallel with the main contacts of the time overvoltage unit such that when the main contacts close, the seal-in unit picks up and seals in. When the seal-in unit picks up, it raises a target into view which latches up and remains exposed until released by pressing a button beneath the lower-left corner of the corner.

LOCATION

The location should be clean and dry, free from dust and excessive vibration, and well lighted to facilitate inspection and testing.

MOUNTING

The relay should be mounted on a vertical surface. The outline and panel drilling dimensions are shown in Fig. 10.

CONNECTIONS

The internal connections diagram for this relay is shown in Fig. 2. A typical wiring diagram is shown in Fig. 3.

One of the mounting studs or screws should be permanently grounded by a conductor not less than No. 12 B & S gauge copper wire or its equivalent.

INSPECTION

At the time of installation, the relay should be inspected for tarnished contacts, loose screws, or other imperfections. If any trouble is found, it should be corrected in the manner described under MAINTENANCE.

CAUTION:

EVERY CIRCUIT IN THE DRAWOUT CASE HAS AN AUXILIARY BRUSH. IT IS ESPECIALLY IMPORTANT ON CURRENT CIRCUITS AND OTHER CIRCUIT WITH SHORING BARS THAT THE AUXILIARY BRUSH BE BENT HIGH ENOUGH TO ENGAGE THE CONNECTING PLUG OR TEST PLUG BEFORE THE MAIN BRUSHES DO. THIS WILL PREVENT CT SECONDARY CIRCUITS FROM BEING OPENED. SEE FIG. 4 SHOWING A CUT-AWAY VIEW OF THIS ASSEMBLY.

FIELD INSTALLATION TESTS

When installing the relay, it is necessary to know (1) that the voltages and currents go to the proper relay terminals, and (2) that none of the relay coils are open-circuited.

Test (1) may be performed using a Weston phase angle meter and two relay test plugs as shown in Fig. 5. With the relay connected as shown in external wiring diagram, Fig. 3 perform the tests outlined below.

Phase angle meter readings are the angle by which the current leads the voltage.

θ = Angle by which I_1 leads V_{1-2} .

θ = 330° at unity power factor when power flow is in non-trip direction.

θ = 150° at unity power factor when power flow is in the trip direction.

Connect P_1 to common points 13R and 13B, P_2 to common points 14R and 14B.							
Connect	3R	3B	5R	5B	7R	7B	Phase Angle Meter Reading
To (1)	C1	C2	5B	5R	7B	7R	θ
(2)	3B	3R	C1	C2	7B	7R	$\theta + 240$
(3)	3B	3R	5B	5R	C1	C2	$\theta + 120$

Connect P_1 to common points 15R and 15B, P_2 to common points 16R and 16B.							
Connect	3R	3B	5R	5B	7R	7B	Phase Angle Meter Reading
To (1)	C1	C2	5B	5R	7B	7R	$\theta + 120$
(2)	3B	3R	C1	C2	7B	7R	θ
(3)	3B	3R	5B	5R	C1	C2	$\theta + 240$

Connect P ₁ to common points 17R and 17B, P ₂ to common points 18R and 18B.							
Connect	3R	3B	5R	5B	7R	7B	Phase Angle Meter Reading
To (1	C1	C2	5B	5R	7B	7R	$\theta + 240$
(2	3B	3R	C1	C2	7B	7R	$\theta + 120$
(3	3B	3R	5B	5R	C1	C2	θ

Connect P ₁ to common points 19R and 19B, P ₂ to common points 20R and 20B.							
Connect	3R	3B	5R	5B	7R	7B	Phase Angle Meter Reading
To (1	C1	C2	5B	5R	7B	7R	$\theta + 120$
(2	3B	3R	C1	C2	7B	7R	θ
(3	3B	3R	5B	5R	C1	C2	$\theta + 240$

Test (2) may be performed by noting that torque is available and in the correct direction upon removal of two of the three currents, removing each of the three current combinations in turn. When making this test, the current should be considerably removed from the angle of zero torque.

Some operators believe that test (2) is all that is necessary. However, it is possible to get the correct direction of the torque in test (2) without having correct connections.

POLARITY

Complete polarity tests are made in the factory and these may be checked by connecting terminals A and C together as listed in the following table, connecting terminals B and D through a resistor (20 ohms), and applying rated voltage to terminals C and D. With these connections, the left-hand contact (front view) should close in each of the following eight checks.

Current Coil		Potential Coil	
A	B	C	D
3	4	20	19
3	4	14	13
5	6	16	15
5	6	18	17
7	8	13	14
7	8	15	16
7	8	17	18
7	8	19	20

TARGET AND SEAL-IN ELEMENT

For trip coils operating on currents ranging from 0.2 up to 2.0 amperes at the minimum control voltage, set the target and seal-in tap screw in the 0.2 ampere tap.

For trip coils operating on currents ranging from 2 to 30 amperes at the minimum control voltage, place the tap screw in the 2.0 ampere tap.

The tap screw in the screw holding the right-hand stationary contact of the seal-in unit. To change the tap setting, first remove the connection plug. Then, take a screw from the left-hand stationary contact and place it in the desired tap. Next remove the screw from the other tap, and place it in the left-hand contact. This procedure is necessary to prevent the right-hand stationary contact from getting out of adjustment. Screws should not be in both taps at the same time.

TIME SETTING

The time delay of the upper unit is determined by the setting of the time dial. The time is 30 seconds when the time dial is set on #10 T.D.S. Fig. 6 shows the time delay for any time dial setting.

PICKUP

The pickup of Type GGP53B relay may be checked by connecting it as in Fig. 7. With rated voltage, current and frequency, the relay should just close its contacts at a phase angle of 120 degrees and 300 degrees, current leading voltage. This means the maximum torque angle read on the phase angle meter is 30 degrees.

With the phase angle set at 30 degrees, current leading voltage, the relay should just close its contacts when each of the ammeters in Fig. 7 is reading 0.025 amperes.

CLUTCH

The clutch adjusting screw on the lower unit should be tightened so that the clutch will not slip when rated voltage and current at the angle of maximum torque is applied.

HOLDING COIL

The holding coil gap should be adjusted so that the holding action will not be enough to hold the directional unit contacts closed when there is only potential applied to the directional unit potential coils. This holding coil is used to assist the directional unit to hold its contacts closed when the relay is operating near pickup, in a location where there is vibration. If when installed it is found that the holding coil will hold the directional contact closed when only voltage is applied to the relay, the holding coil gap should be increased until the holding coil will no longer hold the contact closed. This gap can be increased by backing out the stop screw, set 1/2 turn, then bringing the contact barrel forward by a 1/2 turn also to maintain the same contact gap.

If the vibration at the relay location is not too severe the holding coil can be shorted out and the holding action eliminated entirely.

MAINTENANCE

PERIODIC TEST AND INSPECTION

An operation test and inspection of the relay at least once every six months is recommended. Regarding tests, it is believed that test (2) under FIELD INSTALLATION TESTS is sufficient.

SERVICING

The relay was properly adjusted at the factory to obtain the desired characteristics and it is advisable not to disturb these adjustments. If for any reason it becomes necessary to remove the rotor from the lower unit, proceed in the following manner.

- a. Disconnect all the lead from this unit that go to the terminal or to the upper unit.
- b. Remove the four screws that hold the relay base plate to the cradle, and remove the unit from the cradle.
- c. Remove the two screws which secure the top bearing plate.
- d. The contact plate is secured to the stator assembly by means of three screws. The screws are located on the right-hand and left-hand sides in the front and in the middle at the rear. Remove the three screws.
- e. The shaft, rotor and top bearing plate will lift out with the contact plate.
- f. The rotor may be removed from the shaft by loosening the two set screws which fit into V-holes in the shaft when the rotor is properly placed on the shaft.

The two stator castings are permanently fastened together with the laminations clamped between them and the faces of the poles and the cylindrical surfaces on these castings are then machined true about the same axis. To preserve this alignment the large rivets in the corners should never be removed.

Use care in handling the rotor while it is out of the relay; and see that the air gap and rotor are kept clean.

In reassembly, the rotor will go into the air gap easily without forcing if the parts are held in line properly.

BEARINGS

The lower jewel bearing should be screwed all the way in until its head engages the end of the threaded core. The upper bearing should be adjusted to allow about 1/64 inch end play to the shaft.

To check the clearance between the iron core and the inside of the rotor cup, press down on the contact arm near the shaft and thus depress the spring mounted jewel until the cup struck the iron. The shaft should move about 1/16 inch.

The lower jewel may be tested for cracks by exploring its surface with the point of a fine needle. If it is necessary to replace the jewel a new pivot should be screwed into the bottom of the shaft at the same time.

If lower unit is disassembled the relay must be recalibrated.

CONTACT CLEANING

For cleaning fine silver contacts, a flexible burnishing tool should be used. This consists of a flexible strip of metal with an etched roughened surface, resembling in effect a superfine file. The polishing action is so delicate that no scratches are left, yet corroded material will be removed rapidly and thoroughly. The flexibility of the tool insures the cleaning of the actual points of contact.

Fine silver contacts should not be cleaned with knives, files, or abrasive paper or cloth. Knives or files may leave scratches which increase arcing and deterioration of the contacts. Abrasive paper or cloth may leave minute particles of insulating abrasive material in the contacts and thus prevent closing.

The burnishing tool described above can be obtained from the factory.

The stationary contacts on the lower unit is a barrel type assembly which supports a cone type silver contact mounted on a flexible diaphragm. It is important to note that this assembly does not use a solid diaphragm behind the silver contact nor does it have a steel ball. These last two items are commonly used in this barrel type stationary contact. This assembly then, in conjunction with the action of the holding coil results in good contact action.

The contact barrel has 32 threads per inch, hence provides a convenient means to set or check the required contact of 0.018". 210 degree of the barrel is equal to a 0.018" displacement.

RECALIBRATION

BIAS

A voltage bias is made on the lower unit. The potential connections are made as shown in Fig. 7. The current connections are not made. Rated voltage and frequency is then applied to the relay after the control spring is set so that the contact floats free from both the contact and the backstop. When voltage is applied the contacts should remain in the same position as they were before the voltage was applied. If the contacts move the unit should be adjusted for zero torque as follows:

Zero torque is obtained by loosening the nut at the bottom of the stator which locks the core in position and turning the core a small amount by means of a screw driver in the slot at the bottom of the core. Small notches in the core face parallel to the axis of the cover make this adjustment possible. Be sure to tighten the nut after this adjustment.

MAXIMUM ANGLE OF TORQUE

With the relay connected as in Fig. 7 rated voltage, current and frequency applied, the four adjustable resistors mounted on the rear of the relay may be adjusted so that the lower unit contacts will just close at phase angle readings of 120 and 200 degrees. Hence, the maximum angle of torque will be at 30 degrees, current leading voltage.

CLUTCH:

Tighten the clutch adjusting screw so that the clutch will not slip when rated voltage and current at rated frequency is applied.

PICK UP (LOWER UNIT)

The pick up may be set by first adjusting the phase shifter of Fig. 7 for 30 degrees. Then, the current through the ammeter should be reduced to 0.025 amperes. The spring should be adjusted so that the lower unit contacts just close at this current.

HOLDING COIL:

The information under INSTALLATION for the holding coil should be applied.

PICK UP (UPPER UNIT)

With the relay connected as in Fig. 8, the pick up of the upper unit should be set using the control spring. The contacts should just close at 57.5 volts for 120 volt relays and 100 volts for 208 volt relays.

TIME TEST (UPPER UNIT)

The time of the upper unit may be checked by connecting relay as in Fig. 8. If the time does not check that given in Fig. 6, adjust alnico drag magnet along its shelf a short distance, until a time of 30 seconds from the number 10 time dial setting is obtained. Moving the drag magnet toward the disk shaft shortens the time while moving it toward the disk edge lengthens the time.

RENEWAL PARTS

It is recommended that sufficient quantities of renewal parts be carried in stock to enable the prompt replacement of any that are worn, broken, or damaged.

When ordering renewal parts, address the nearest Sales Office of the General Electric Company, specify quantity required, name of part wanted, and give complete nameplate data. If possible, give the General Electric Company requisition number on which the relay was furnished. For a parts list refer to GEF-3956.

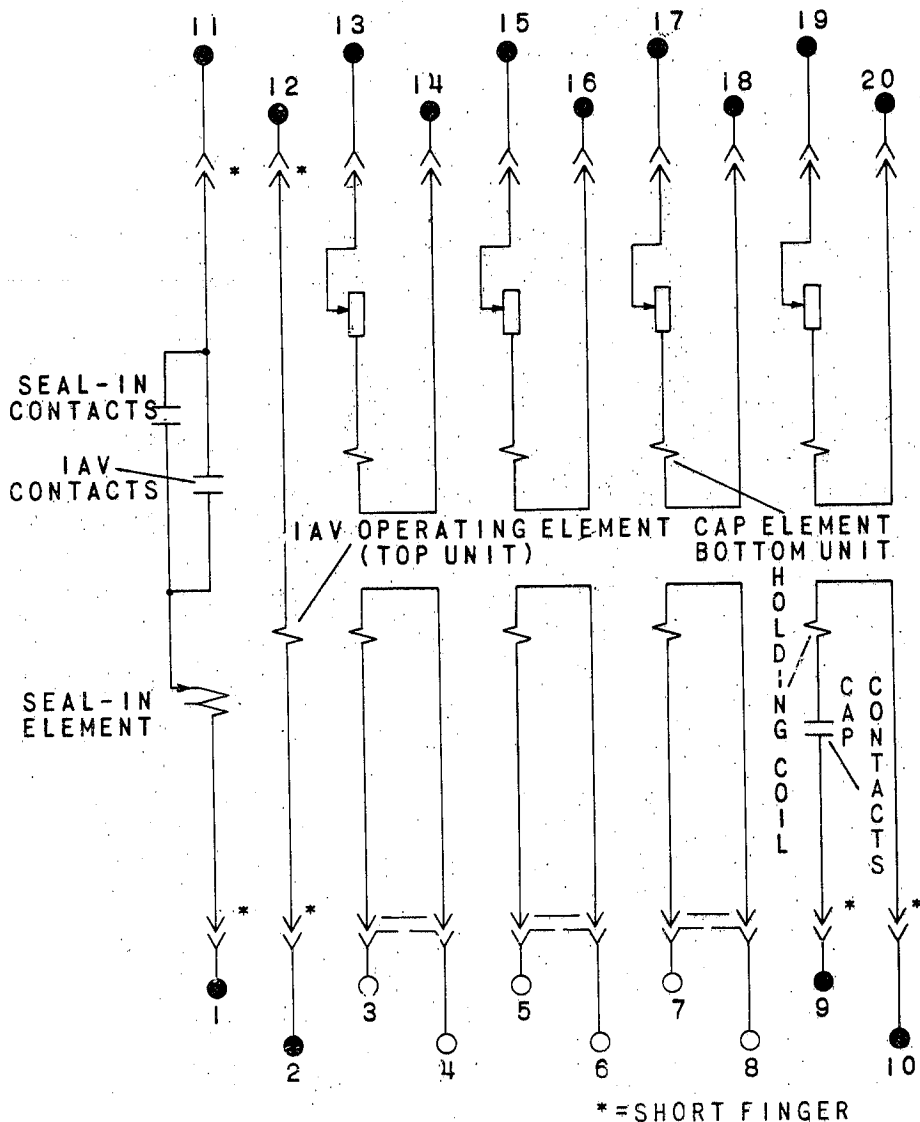


FIG. 2 (6507969-0) Internal Connections Diagram For The GGP53B Relay (Front View)

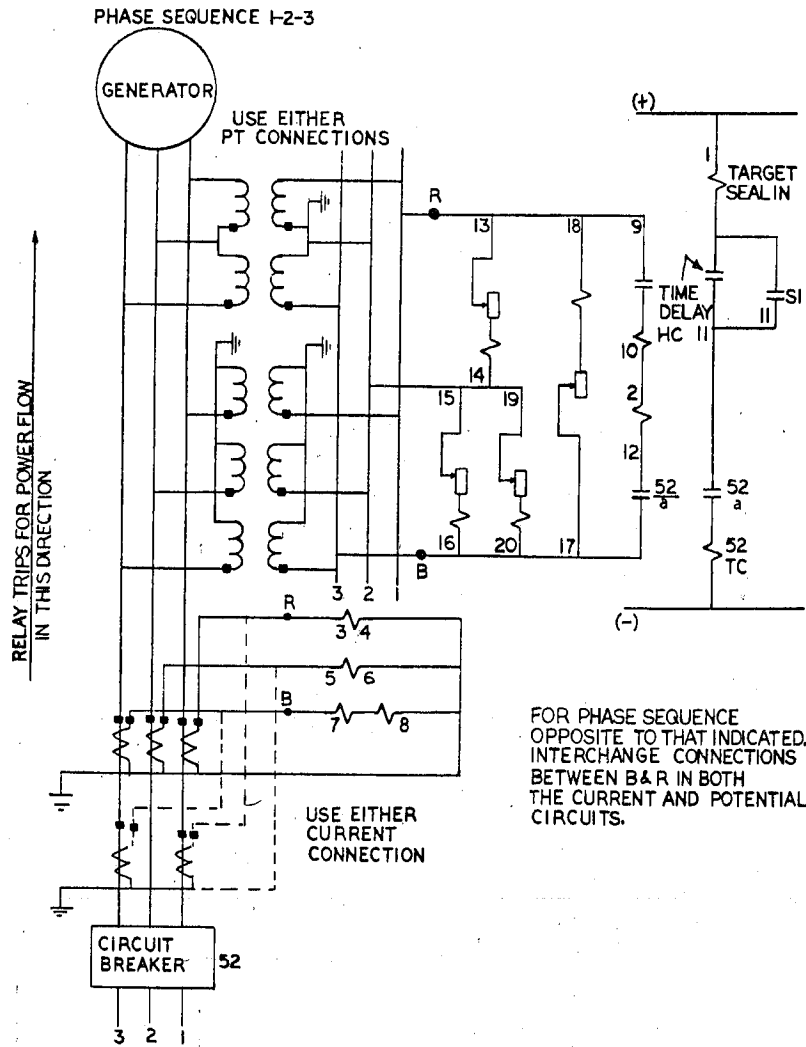
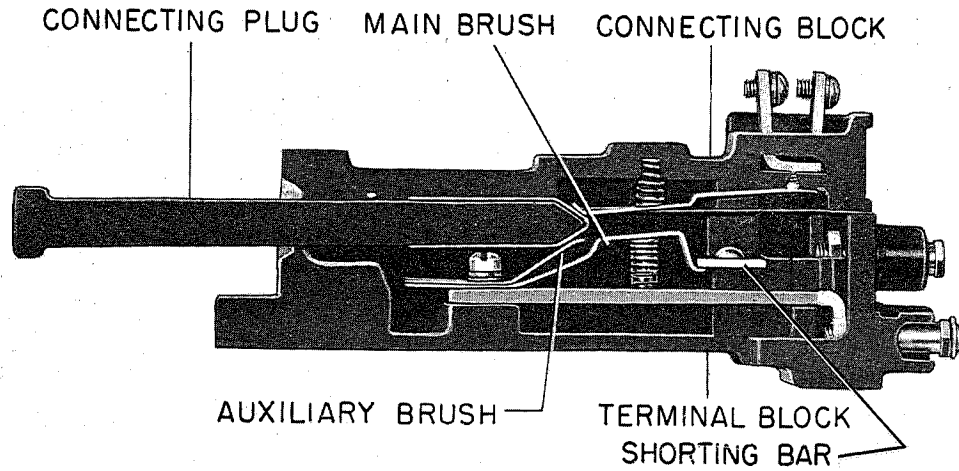
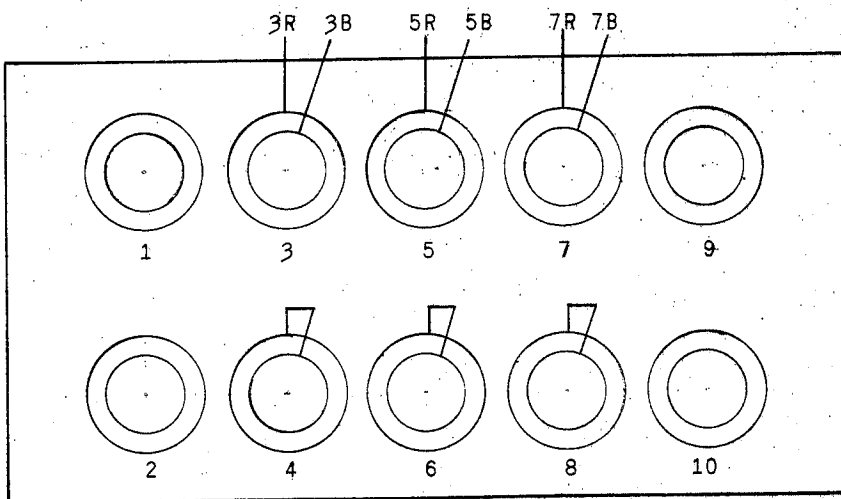
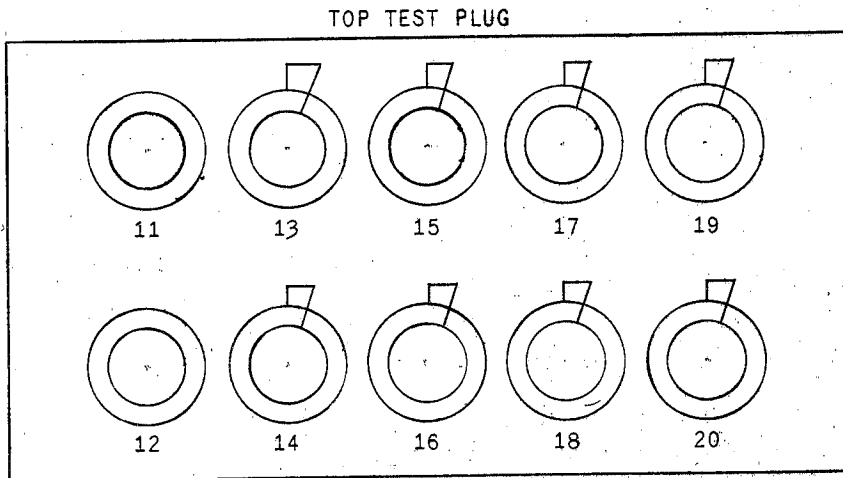


FIG. 3 (0226A7012-1) External Connections Diagram For The GGP53B Relay



NOTE: AFTER ENGAGING AUXILIARY BRUSH, CONNECTING PLUG TRAVELS 1/4 INCH BEFORE ENGAGING THE MAIN BRUSH ON THE TERMINAL BLOCK

FIG. 4 (8025039) Cross Section Drawout Case Showing Position Of Auxiliary Brush



BOTTOM TEST PLUG

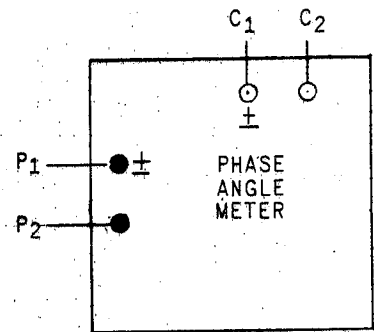


FIG. 5 (264B417-0) Sh. 1 Test Plug Diagram For The GGP53B Relay

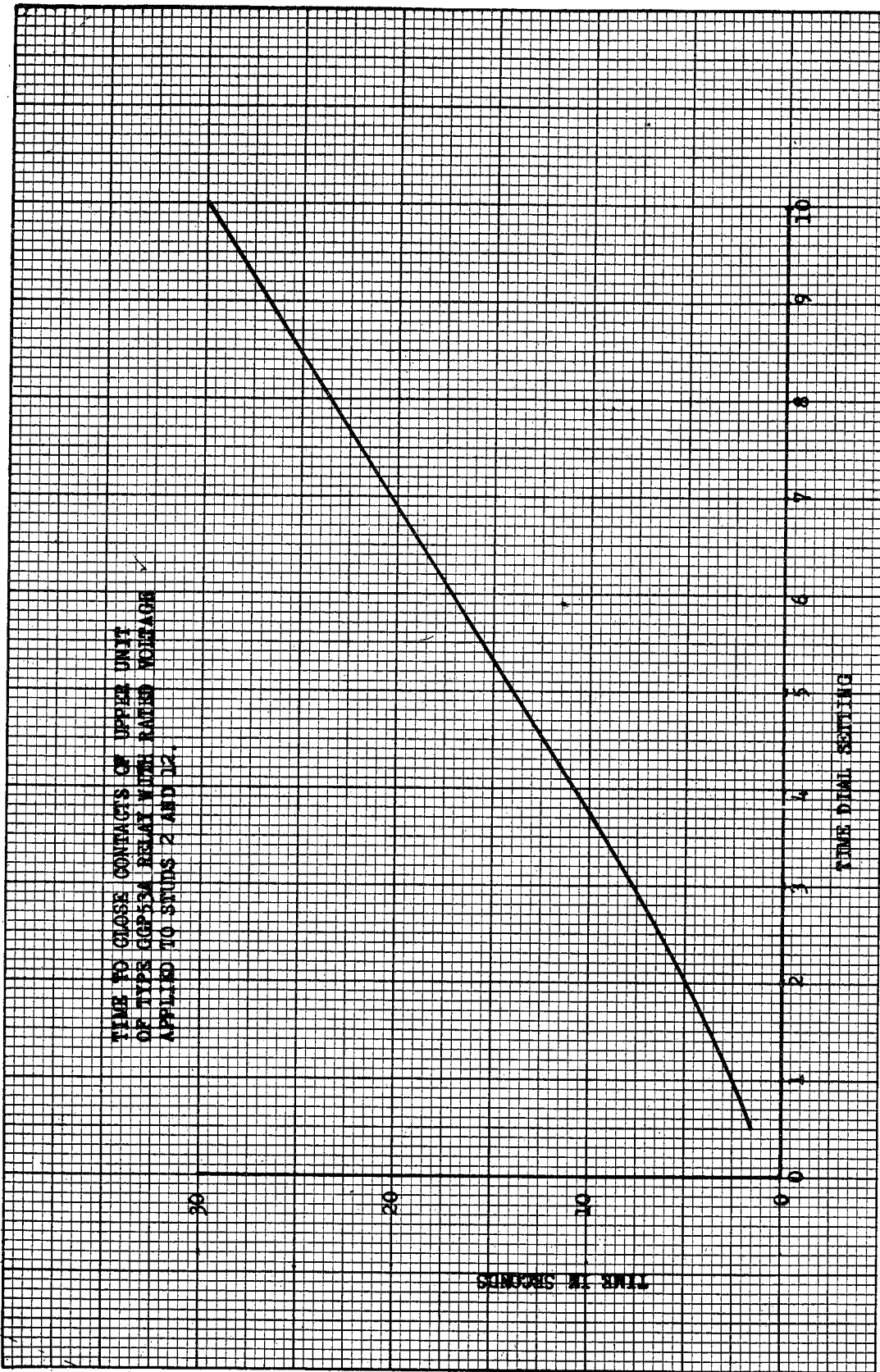


FIG. 6 (K-6400766-0) Time Curve For The GGP53B Relay

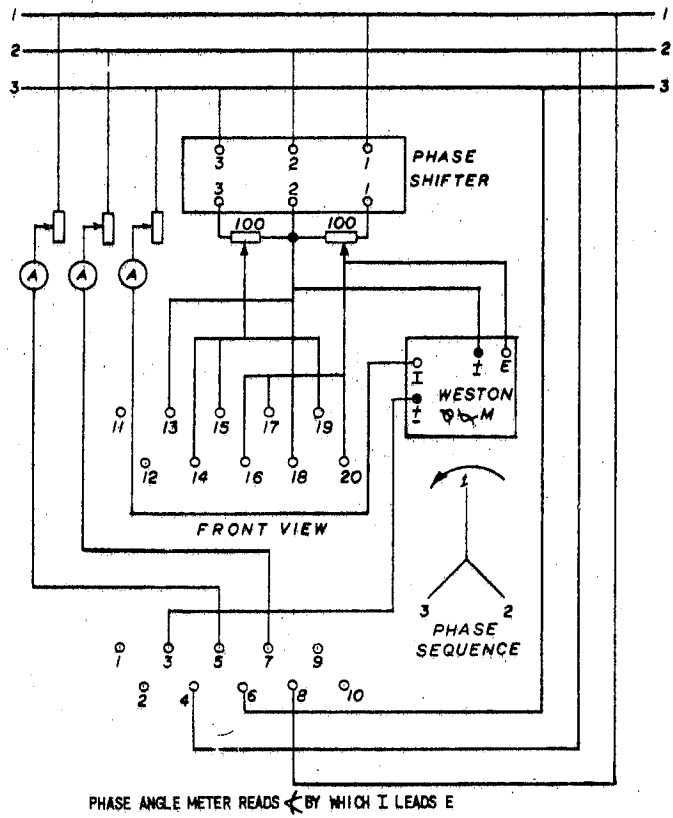


FIG. 7 (K-6400763-3) Test Diagram For Cup Unit (Lower Unit)

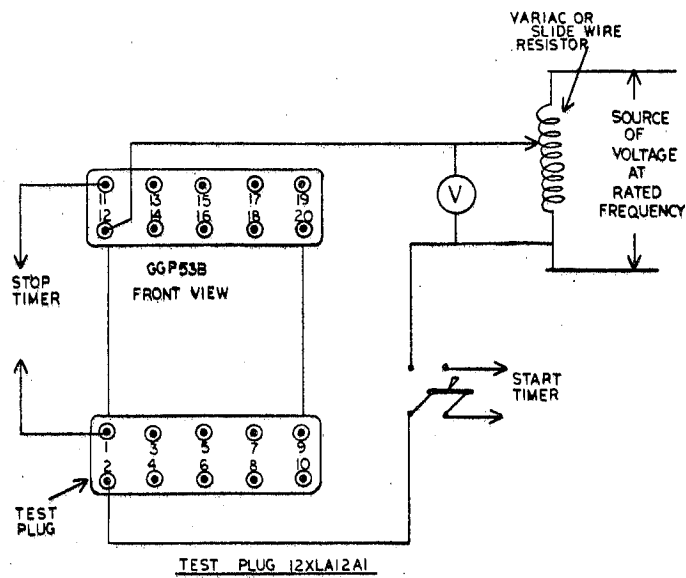


FIG. 8 (0226A6958-0) Test Diagram For Disc Unit (Upper Unit)

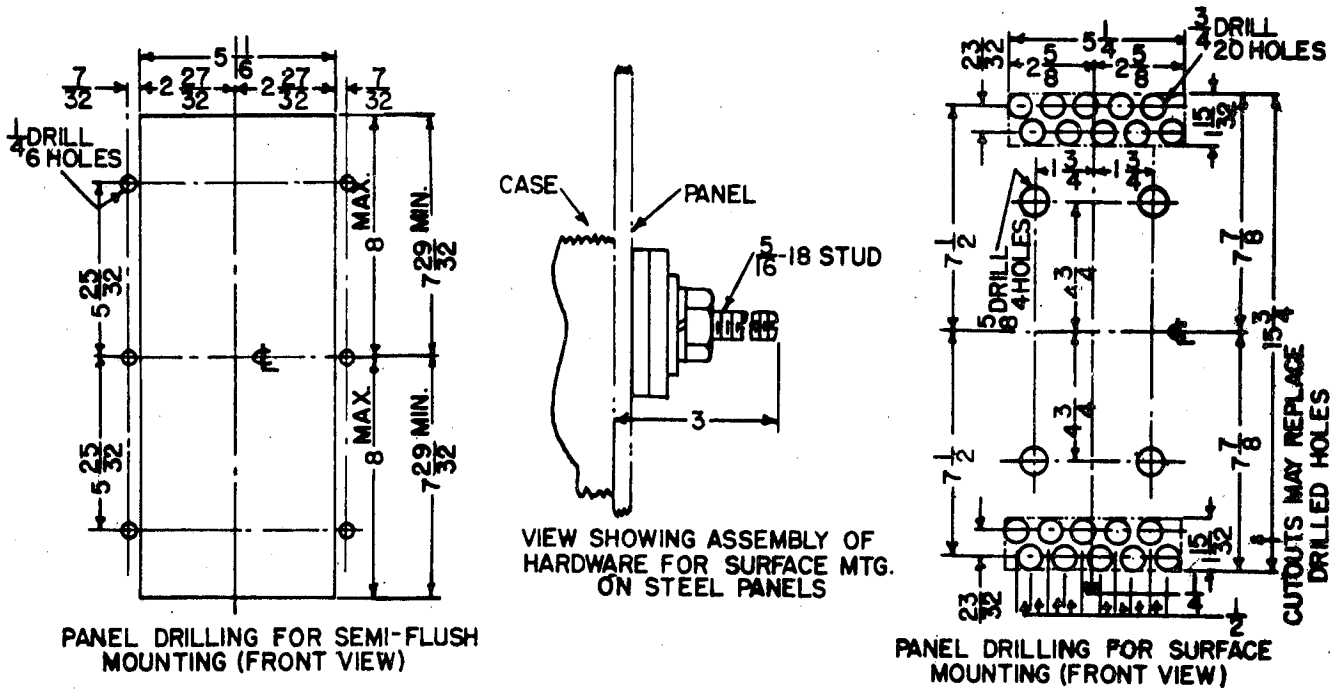
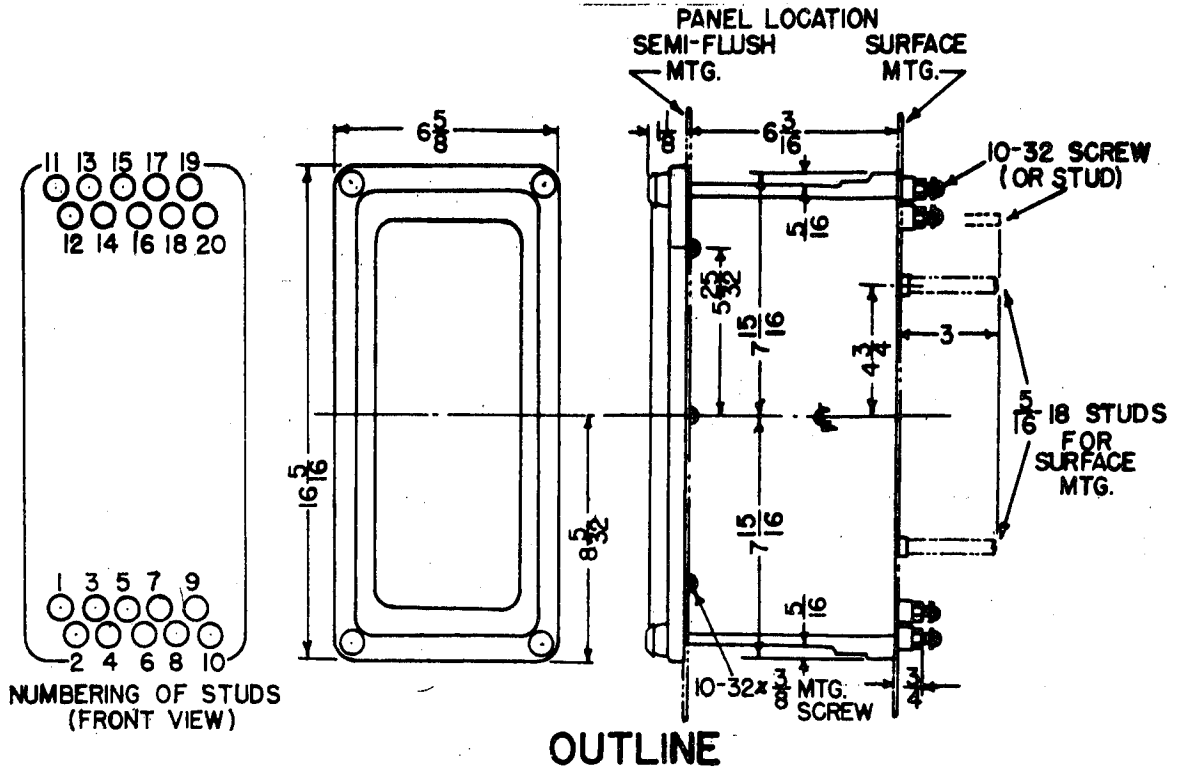


FIG. 9 (K-6209274-2) Outline And Panel Drilling Dimensions For The GGP53B Relay

GENERAL ELECTRIC INSTALLATION AND SERVICE ENGINEERING OFFICES

FIELD SERVICE OFFICE CODE KEY

- * Mechanical & Nuclear Service
- † Electrical & Electronic Service
- ‡ Marine Service
- × Transportation

FOR YOUR LASTING SATISFACTION... with the performance and availability of your General Electric equipment, GE provides this nationwide network of field service offices, serving utility, industrial, transportation and marine users. Qualified field engineers provide installation, start-up, employee training, engineering maintenance and other services, throughout the productive life of the equipment. For full information, call your nearest Installation & Service Engineering office.

ALABAMA * † Birmingham 35205 2151 Highland Ave. * † Mobile 36609 1111 S. Beltline Highway	LOUISIANA * † Baton Rouge 70806 8312 Florida Blvd. * † New Orleans 70125 4747 Earhart Blvd. * † Shreveport 71104 2620 Centenary Blvd. † Monroe 71201 1028 North 6th St.	OKLAHOMA * † Oklahoma City 73106 2000 Classen Blvd. † Tulsa 74105 P. O. Box 7646, Southside Sta.
ALASKA † Anchorage 99501 115 Whitney Rd.	MARYLAND * † Baltimore 21201 1 N. Charles St.	OREGON * † Eugene 97401 1170 Pearl St. * † † Portland 97210 2929 NW 29th Ave.
ARIZONA * † Phoenix 85012 3550 N. Central Ave. † Tucson 85716 151 S. Tucson Blvd.	MASSACHUSETTS * † † Wellesley 02181 1 Washington St.	PENNSYLVANIA * Allentown 18102 1444 Hamilton St. * † † Philadelphia 19102 3 Penn Center Plaza * † Pittsburgh 15222 300 6th Avenue Bldg.
ARKANSAS † North Little Rock 72119 120 Main St.	MICHIGAN * † † Detroit 48202 700 Antoinette St. * † † Jackson 49201 210 W. Franklin St. † Saginaw 48607 1008 Second National Bank Bldg.	SOUTH CAROLINA † † Columbia 29204 2700 Middleburg Dr. † Greenville 29607 41 No. Pleasantburg Dr.
CALIFORNIA * † † Los Angeles 90054 212 N. Vignes St. † Palo Alto 94303 960 San Antonio Rd. † Sacramento 95808 2407 J St. † San Diego 92103 2560 First Ave. * † † San Francisco 94119 55 Hawthorne St. * † † Vernon 90058 3035 E. 46th St.	MINNESOTA † † Duluth 55802 300 W. Superior St. * † † Minneapolis 55416 1500 Lilac Drive So.	TENNESSEE * † Chattanooga 37411 5800 Bldg, Eastgate Center † Memphis 38130 3385 Airways Blvd.
COLORADO * † Denver 80206 201 University Blvd.	MISSOURI * † † Kansas City 64199 911 Main St. * † † St. Louis 63101 1015 Locust St.	TEXAS * † † Amarillo 79101 303 Polk St. * † † Beaumont 77704 1385 Calder Ave. * † † Corpus Christi 78401 205 N. Chaparral St. * † † Dallas 75222 8101 Stemmons Freeway * † † El Paso 79945 215 N. Stanton † † Fort Worth 76102 408 W. Seventh St. * † † Houston 77027 4219 Richmond Ave. † San Antonio 78204 434 S. Main St.
CONNECTICUT * † Meriden 06450 1 Prestige Dr.	MONTANA † Butte 59701 103 N. Wyoming St.	UTAH † Salt Lake City 84111 431 S. Third East St.
FLORIDA † † Jacksonville 32203 4040 Woodcock Dr. † † Miami 33134 4100 W. Flagler St. * † † Tampa 33609 2106 S. Lois Ave.	NEBRASKA * † Omaha 68102 409 S. 17th St.	VIRGINIA * † † Newport News 23601 311 Main St. † † Richmond 23230 1508 Willow Lawn Dr. † Roanoke 24015 2018 Colonial Ave.
GEORGIA * † † Atlanta 30309 1860 Peachtree Rd., NW † † Savannah 31405 5002 Paulsen St.	NEW JERSEY * † Millburn 07041 25 E. Willow St.	WASHINGTON * † † Seattle 98188 112 Andover Park East, Tukwila † Spokane 99202 E. 1805 Trent Ave.
HAWAII * † † Honolulu 96813 440 Coral St.	NEW YORK † † Albany 12205 15 Computer Drive, West * † † Buffalo 14205 625 Delaware Ave. * † † † New York 10022 641 Lexington Ave. * † † Rochester 14604 89 East Ave. * † † Syracuse 13206 3532 James St.	WEST VIRGINIA * † Charleston 25328 306 MacCorkle Ave., SE
ILLINOIS * † † † Chicago 60680 840 S. Canal St.	NORTH CAROLINA * † † Charlotte 28207 141 Providence Rd. * † † Wilmington † Reigelwood 28456 P. O. Box 186	WISCONSIN * † Appleton 54911 3003 West College Dr. * † † Milwaukee 53202 615 E. Michigan St.
INDIANA † Evansville 47705 2709 Washington Ave. † Fort Wayne 46807 3806 S. Calhoun St. * † Indianapolis 46207 3750 N. Meridian St.	OHIO * † Cincinnati 45206 2621 Victory Pkwy. * † † Cleveland 44104 1000 Lakeside Ave. † Columbus 43229 1110 Morse Rd. † † Toledo 43606 3125 Douglas Rd. † Youngstown 44507 272 Indianola Ave.	
IOWA † Davenport 52805 P. O. Box 630, 1039 State St., Bettendorf		
KENTUCKY † Louisville 40218 2300 Meadow Dr.		

GENERAL ELECTRIC SERVICE SHOPS

WHEN YOU NEED SERVICE... These GE Service Shops will repair, recondition, and rebuild your electric apparatus. The facilities are available day and night, seven days a week, for work in the shops or on your premises.

Latest factory methods and genuine GE renewal parts are used to maintain performance of your equipment. For full information about these services, contact your nearest service shop or sales office.

ALABAMA • Birmingham 35211 1500 Mims Ave., S.W. • Mobile 36609 721 Lakeside Dr.	LOUISIANA • Baton Rouge 70814 10955 North Dual St. • New Orleans 70114 1115 DeArmas St.	OKLAHOMA • Tulsa 74145 5220 S. 100th East Ave.
ARIZONA • (Phoenix) Glendale 85019 4911 W. Colter St. • Phoenix 85019 3840 W. Clarendon St. • Tucson 85713 2942 So. Palo Verde Ave.	MARYLAND • Baltimore 21230 920 E. Fort Ave.	OREGON • Eugene 97402 570 Wilson St. • Portland 97210 2727 NW 29th Ave.
CALIFORNIA • Los Angeles 90301 6900 Stanford Ave. • (Los Angeles) Anaheim 92805 3601 E. LaPalma Ave. • (Los Angeles) Inglewood 90301 228 W. Florence Ave. • Sacramento 95814 99 North 17th St. • (San Francisco) Oakland 94608 1650 34th St.	MASSACHUSETTS • * Δ (Boston) Medford 02155 3960 Mystic Valley Pkwy.	PENNSYLVANIA • Allentown 18103 668 E. Highland St. • (Delaware Valley) Cherry Hill, N. J., 08034 1790 E. Marlton Pike • Johnstown 15802 841 Oak St. • Philadelphia 19124 1040 East Erie Ave. • (Pittsburgh) West Mifflin 15122 4930 Buttermilk Hollow Rd. • York 17403 54 N. Harrison St.
COLORADO • Denver 80205 3353 Larimer St.	MICHIGAN • * Δ (Detroit) Riverview 18075 Krause Ave. • Flint 48505 1506 E. Carpenter Rd.	SOUTH CAROLINA • (Charleston) No. Charleston 29401 2490 Debonair St.
CONNECTICUT • (Southington) Plantsville 06479 370 Atwater St.	MINNESOTA • Duluth 55807 50th Ave. W & St. Louis Bay • Minneapolis 55430 2025 49th Ave., N.	TENNESSEE • Knoxville 37914 2621 Governor John Sevier Hwy. • Memphis 38107 708 North Main St.
FLORIDA • Jacksonville 32203 2020 W. Beaver St. • (Miami) Hialeah 33010 1062 East 28th St. • Tampa 33601 19th & Grant Sts.	MISSOURI • * Kansas City 64120 3525 Gardner Ave. • St. Louis 63110 1115 East Rd.	TEXAS • Beaumont 77705 1490 W. Cardinal Dr. • Corpus Christi 78401 115 Waco St. • Dallas 75235 3202 Manor Way • Houston 77036 5534 Harvey Wilson Dr. • Houston 77036 6916 Harwin Dr. • Midland 79701 704 S. Johnston St.
GEORGIA • (Atlanta) Chamblee 30341 5035 Peachtree Industrial Blvd. • Atlanta 2379 John Glenn Dr.	NEW JERSEY • New Brunswick 08902 3 Lawrence St.	UTAH • Salt Lake City 84110 301 S. 7th West St.
ILLINOIS • Chicago 60638 6045 S. Nottingham Ave.	NEW MEXICO • Albuquerque 87109 4420 McLeod Rd. NE	VIRGINIA • Richmond 23224 1403 Ingram Ave. • Roanoke 24013 1004 River Ave., SE
INDIANA • Evansville 47711 401 N. Congress Ave. • Ft. Wayne 46803 1731 Edsall Ave. • Hammond 46320 1138 164th Place • Indianapolis 46222 1740 W. Vermont St.	NEW YORK • Albany 12205 1097 Central Ave. • (Buffalo) Tonawanda 14150 175 Milens Rd. • (Long Island) Old Bethpage 11804 183 Bethpage-Sweet Hollow Rd. • (New York City) North Bergen, N. J. 07012 6001 Tonnelle Ave. • (New York City) Clifton, N. J. 07012 9 Brighton Rd. • * Δ Schenectady 12305 1 River Rd. • Syracuse 13208 1015 E. Hiawatha Blvd.	WASHINGTON • Seattle 98134 3422 First Ave., South • Spokane 99211 E. 4323 Mission St.
IOWA • (Davenport) Bettendorf 52722 1025 State St.	NORTH CAROLINA • Charlotte 28208 2328 Thrift Rd.	WEST VIRGINIA • Charleston 25328 306 MacCorkle Ave., SE
KENTUCKY • Louisville 40209 3900 Crittenden Drive	OHIO • Akron (Canton) 44720 7900 Whipple Ave. N. W. • Cincinnati 45202 444 West 3rd St. • * Δ Cleveland 44125 4477 East 49th St. • Columbus 43229 6660 Huntley Rd. • Toledo 43605 405 Dearborn Ave. • Youngstown 44507 272 E. Indianola Ave.	WISCONSIN • (Appleton) Menasha 54910 1725 Racine St. • Milwaukee 53207 235 W. Oklahoma Ave.

• Electrical/Mechanical Service Shop * Instrumentation Shop Δ Special Manufacturing Shop