



INSTRUCTIONS

GEK- 26413

Insert Booklet- GEH-2058

SPECIAL RELAY 0208A8141

This supplement along with the attached instruction book GEH-2058 constitute the instructions for type HEA relay 0208A8141.

Special relay 0208A8141 is similar to 12HEA61C except with 20 contacts +2 for the tripping coil and a rectifier board. The rectifier board is mounted under the latch and coil frame. The additional time of 10 milliseconds should be added to the time to close normally open contacts at rated voltage shown in Fig. 5 of the GEH-2058.

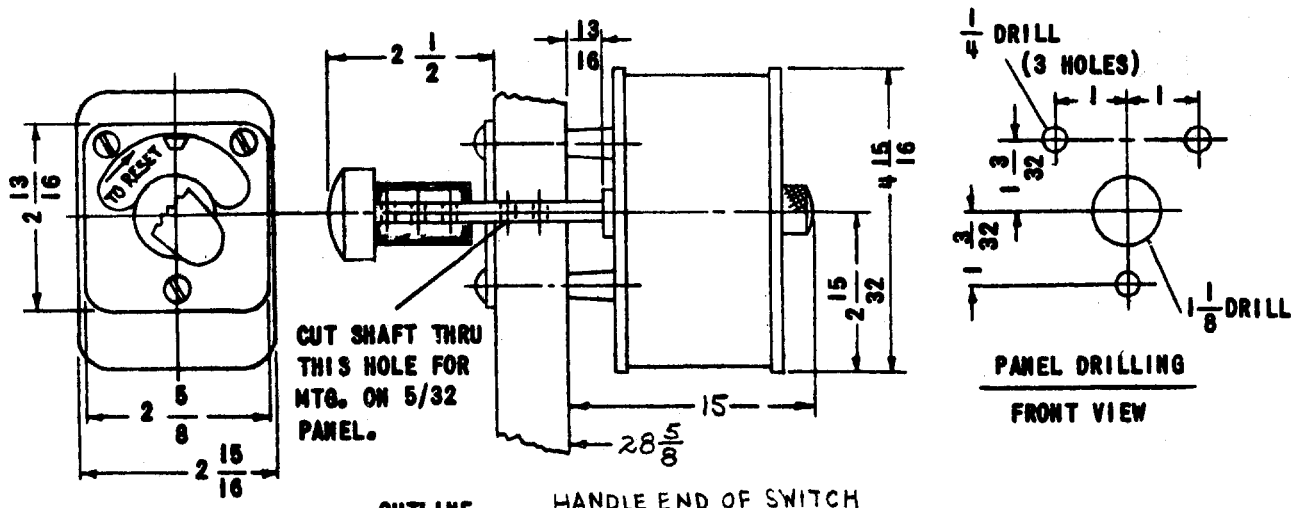
The outline and internal connection are shown in Fig. 1 of this supplement.

Other matters pertaining to this special relay are discussed in the attached instruction book.

These instructions do not purport to cover all details or variations in equipment nor to provide for every possible contingency to be met in connection with installation, operation or maintenance. Should further information be desired or should particular problems arise which are not covered sufficiently for the purchaser's purposes, the matter should be referred to the General Electric Company.

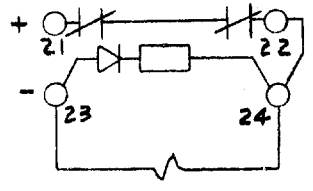
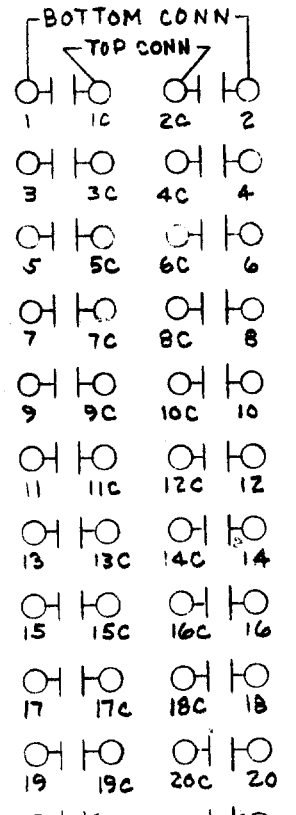
POWER SYSTEMS MANAGEMENT DEPARTMENT

GENERAL  ELECTRIC



OUTLINE

HANDLE END OF SWITCH



INTERNAL CONNS.

NOTE- CONTACT 21 & 22 SHOWN IN RESET POSITION.

FIG. 1 (0208A8141-1 Sh.2) Outline and Panel Drilling Dimensions and Internal Connections Diagram for the 0208A8141 HEA Special Relay.