



AUXILIARY RELAY

TYPE HAA

MODEL 0208A8343

INTRODUCTION

This supplement plus GEK-7354 form the instructions for special relay model 0208A8343.

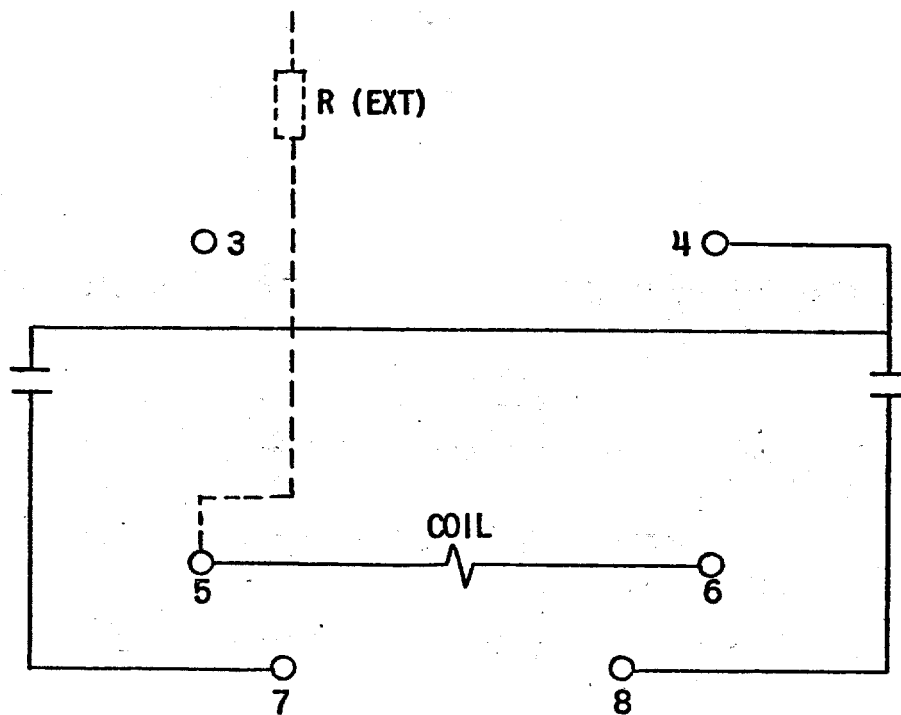
DESCRIPTION

The special relay 0208A8343 is similar to 12HAA16B of the same rated voltage except:

1. The internal resistor (R_1) in series with the coil has been removed.
2. An external resistor (R) will be supplied as per the table shown below.
3. The internal connections are shown in Figure 1 of this supplement.

<u>MODEL NO.</u>	<u>RATED VOLTAGE</u>	<u>R (EXTERNAL)</u>	<u>RESISTANCE</u>
0208A8343G-1	125 VDC	IC9006C101A1000	1000 Ω

These instructions do not purport to cover all details or variations in equipment nor to provide for every possible contingency to be met in connection with installation, operation or maintenance. Should further information be desired or should particular problems arise which are not covered sufficiently for the purchaser's purposes, the matter should be referred to the General Electric Company.



<u>MODEL</u>	<u>VOLTS</u>	<u>COIL</u>	<u>R (EXT)</u>	<u>RI</u>
0208A8343 G-1	125 VDC	95 Ω	1000 Ω	—

FIG. 1 (0246A2238-0) Internal Connections For Type HAA Model 208A8343