



## INSTRUCTIONS

GEK-41997  
Insert Booklet GEI-83964

### SPECIAL RELAY HAA99AA001

TYPE HAA

#### INTRODUCTION

These instructions plus those included in instruction book GEI-83964 form the instructions for this special relay

#### DESCRIPTION

This relay is similar to the 12HAA15A relay described in the attached insert booklet except that the coil is single rated at 0.100 amperes. Refer to Internal Connections Diagram included here as Figure 1.

#### RATINGS

##### TARGET SEAL-IN COIL

0.10 TARGET SEAL-IN UNIT	
Maximum Required	0.10 Ampere
Carry Continuously	0.20 Ampere
Carry for 30 Seconds	1.20 Amperes
D-C Resistance	24 Ohms
60 Cycle Impedance	208 Ohms

##### TARGET SEAL-IN CONTACTS

The contacts will make and carry 30 amperes momentarily or 6 amperes continuously.

These instructions do not purport to cover all details or variations in equipment nor to provide for every possible contingency to be met in connection with installation, operation or maintenance. Should further information be desired or should particular problems arise which are not covered sufficiently for the purchaser's purposes, the matter should be referred to the General Electric Company.

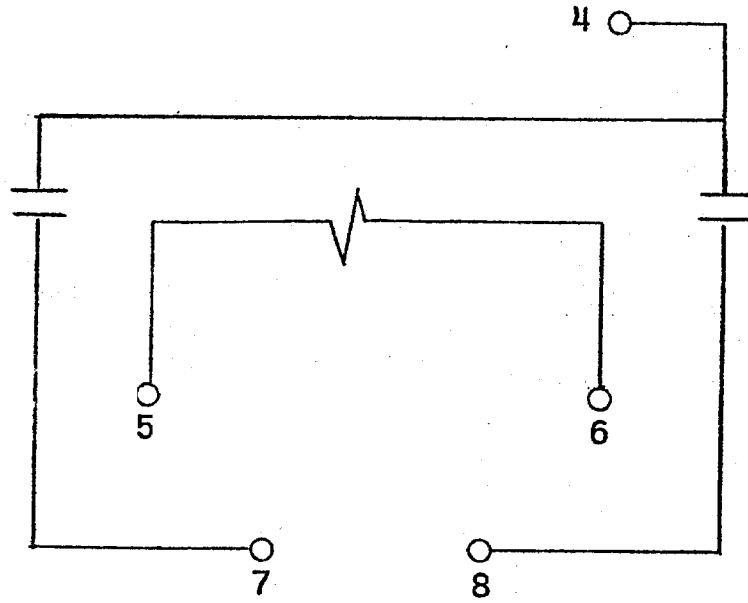


FIG. 1 (0257A5023-0) Internal Connections Diagram For Special Relay HAA99AA001