

INSTRUCTIONS

GEK-86053
Insert Booklet GEI-83964

AUXILIARY CURRENT RELAY

MODEL 12HAA99AF(-)

TYPE HAA

INTRODUCTION

This instruction book, together with GEI-83964, forms the instructions for the 12HAA99AF(-) relay.

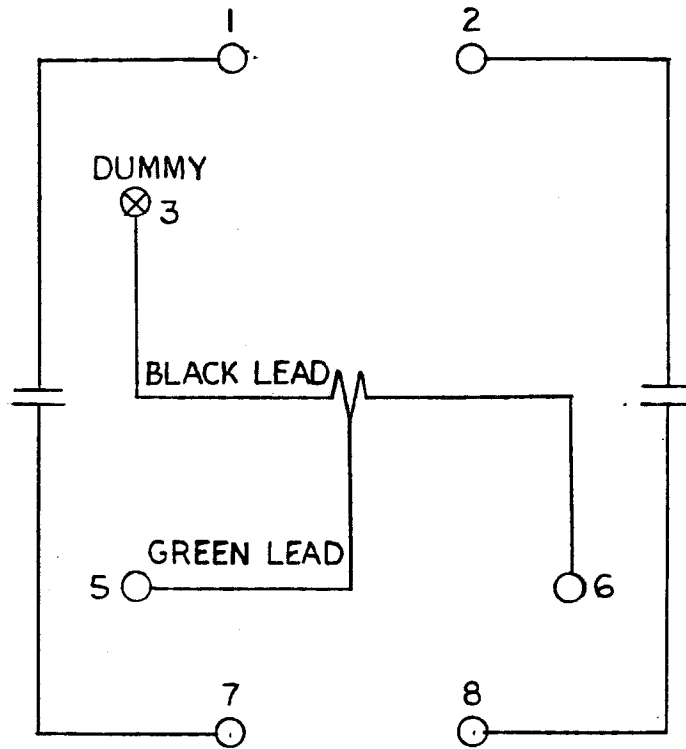
DESCRIPTION

The 12HAA99AF(-) relay consists of a target/seal-in unit with two electrically separate normally open contacts, contained in a surface-mounted, front-connected molded case. The relay is similar to the HAA15A(-) relay in GEI-83964, except for the internal connections diagram shown in Fig. 1 of this book.

The outline and panel drilling is shown in Fig. 2.

These instructions do not purport to cover all details or variations in equipment nor to provide for every possible contingency to be met in connection with installation, operation or maintenance. Should further information be desired or should particular problems arise which are not covered sufficiently for the purchaser's purposes, the matter should be referred to the General Electric Company.

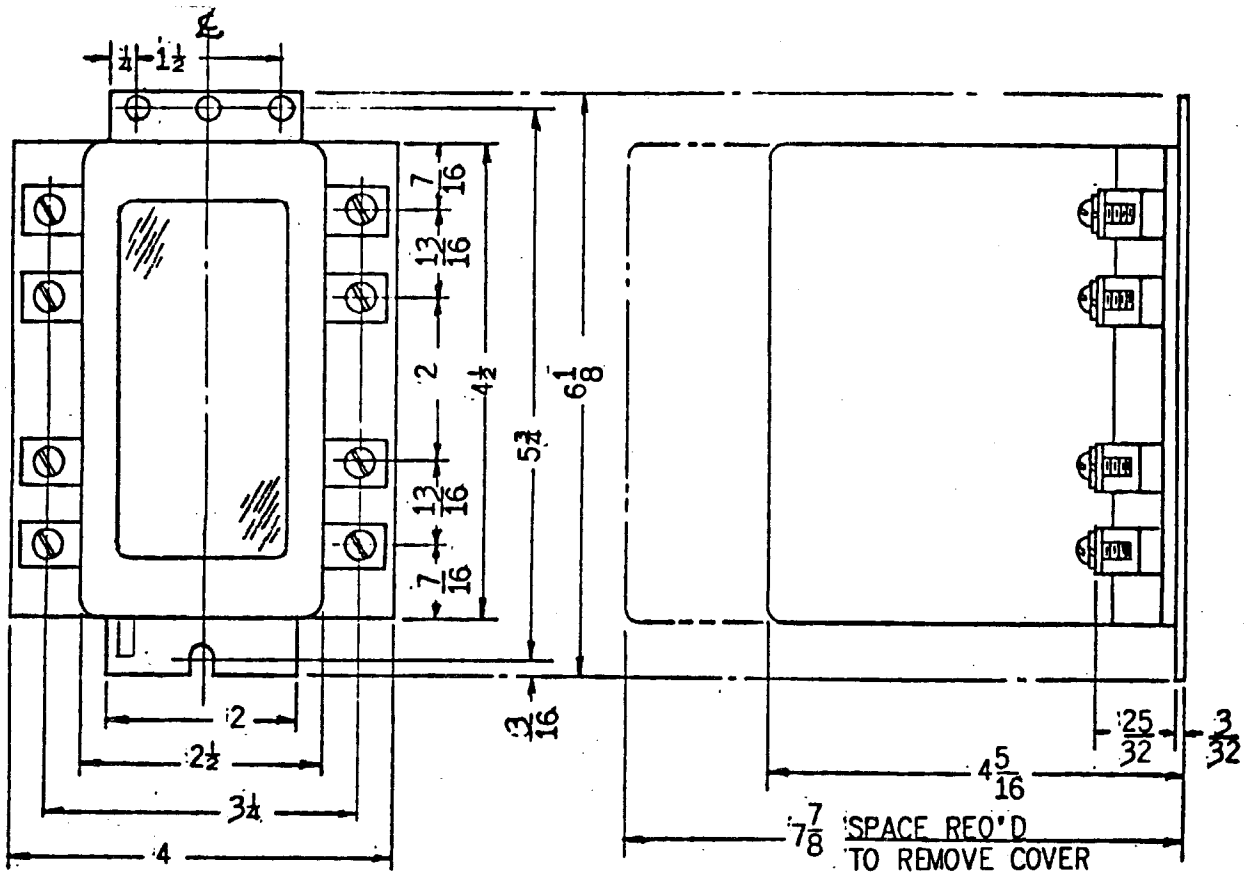
To the extent required the products described herein meet applicable ANSI, IEEE and NEMA standards; but no such assurance is given with respect to local codes and ordinances because they vary greatly.



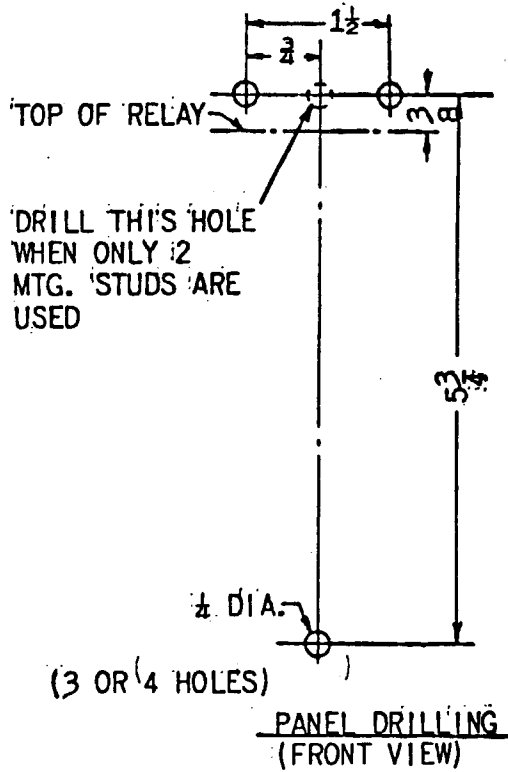
BACK VIEW

CONN. SHOWN FOR HIGHER AMP RATING
INTERCHANGE GREEN & BLACK LEADS
FOR LOWER AMP RATING.

Fig. 1 (0285A5179-0) Internal Connection Diagram
for the 12HAA99AF(-) Relay



OUTLINE



PANEL DRILLING
(FRONT VIEW)

Fig. 2 (0208A3773-0) Outline and Panel Drilling for the 12HAA99AF(-) Relay