



## INSTRUCTIONS

GEK-45323A  
Insert Booklet GEK-1277

AUXILIARY RELAY  
ELECTRIC RESET  
Model 12HEA99AA(-)

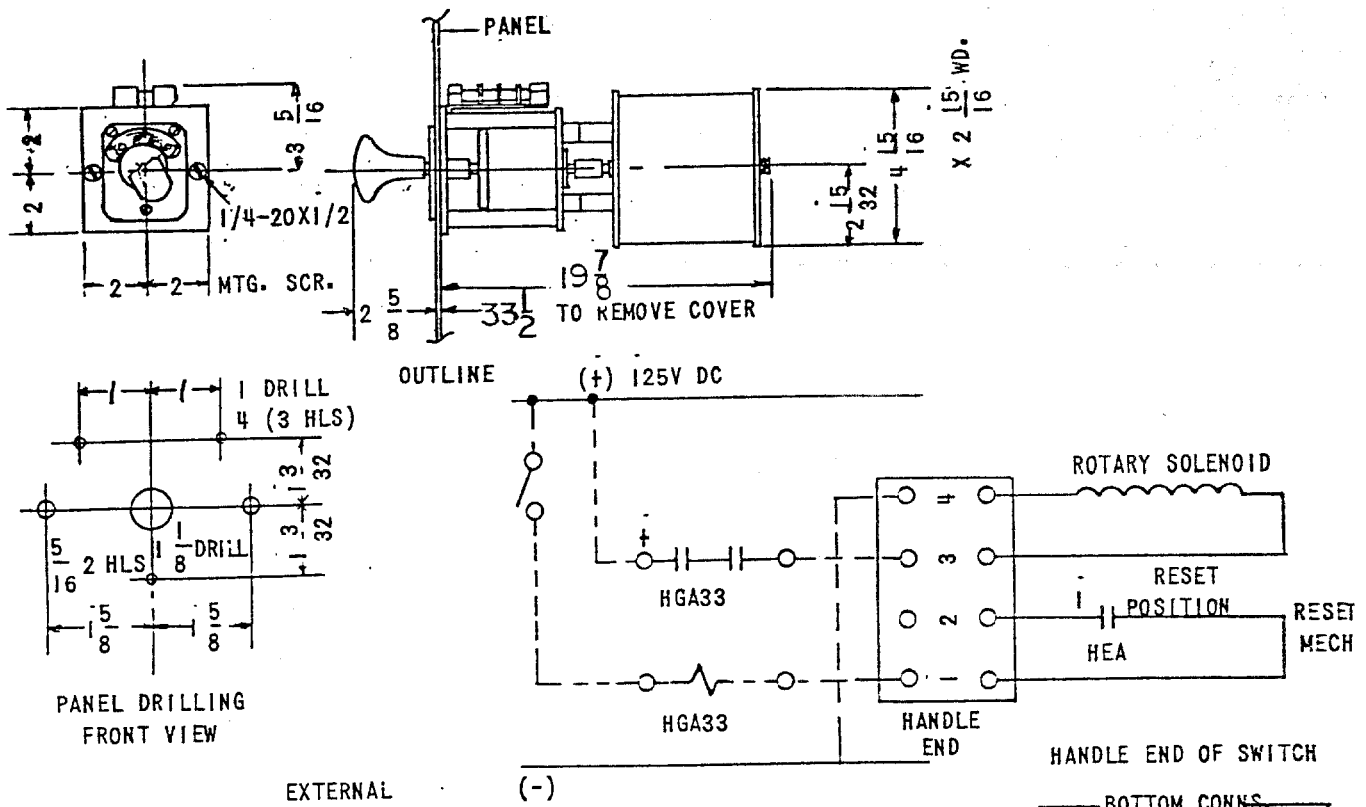
### INTRODUCTION

This instruction book, together with insert booklet GEK-1277, forms the instructions for the 12HEA99AA(-) switch.

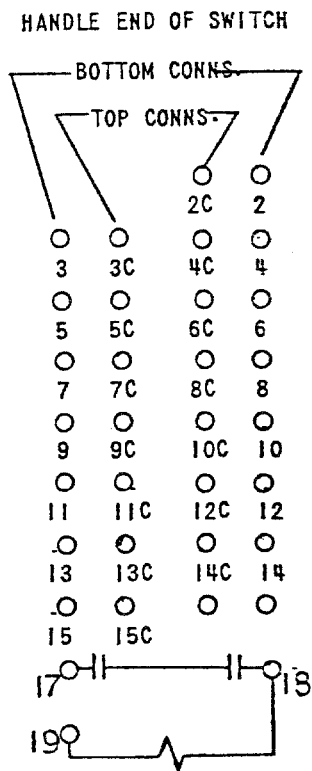
### DESCRIPTION

The 12HEA99AA(-) switch is similar to the 12 HEA63 except that Contacts 6 to 13 are overlapping. The contact arrangement in the reset position is: Closed - 10 to 16, open - 2 to 9.

Figure 1 of this booklet is the internal connections, outline and panel drilling for the HEA99AA Switch.



RELAY FORM NUMERAL						CONTACT ARRANGEMENT RESET POSITION		
CYCLES	DC	DC				OPEN	CLOSED	OVERLAP
VOLTS	125	24				2 TO 9	10 - 16	6 - 13
12HEA99AA	001	002						



HEA INTERNAL CONNS. SEE ABOVE  
NOTE: CONTACT 16 & 17 SHOWN IN  
RESET POSITION :

Figure 1 (12HEA99AA, Sheet 2) Internal Connections, Outline and Panel Drilling