



# INSTRUCTIONS

---

RESET AUXILIARY RELAY

TYPE HEA

MODEL 12HEA99AH

## INTRODUCTION

These instructions, GEK-45408 plus GEH-2058, form the instructions for this relay.

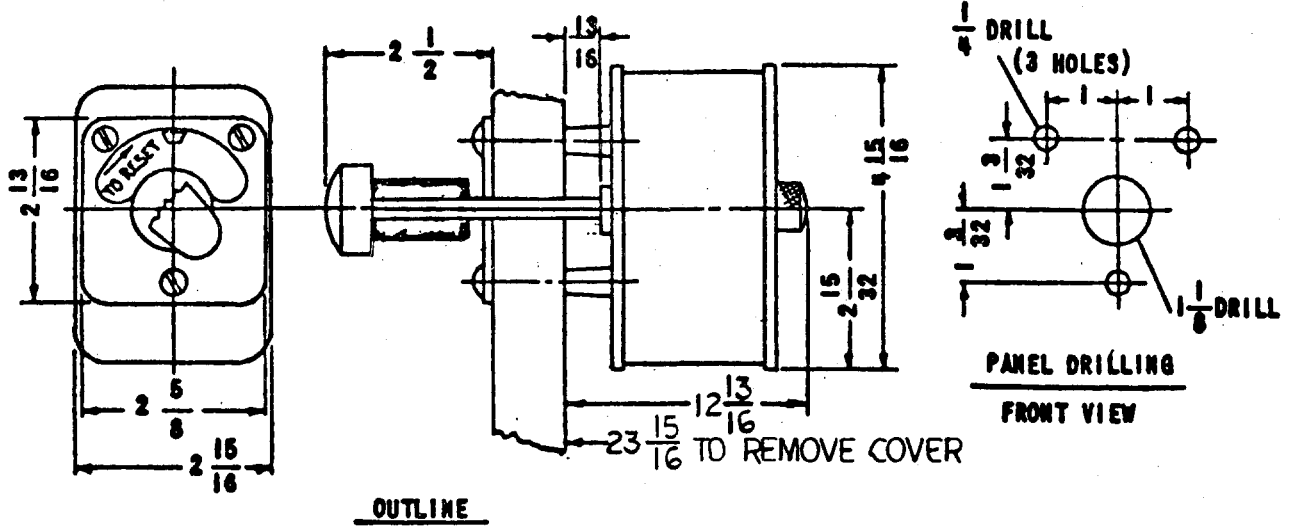
## DESCRIPTION

Relay 12HEA99AH is similar to Model 12HEA61B except with a nine (9) ohm coil and with special non overlapping coil contacts.

Refer to Figure 1 of this supplement for the internal connections, outline, panel drilling and escutcheon engraving.

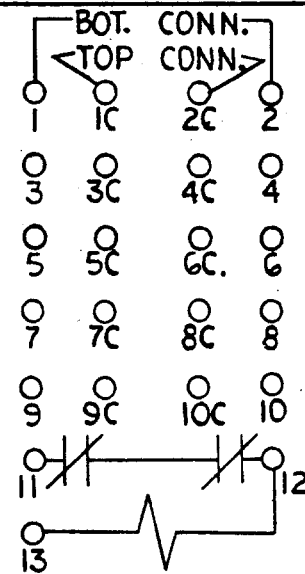
*These instructions do not purport to cover all details or variations in equipment nor provide for every possible contingency to be met in connection with installation, operation or maintenance. Should further information be desired or should particular problems arise which are not covered sufficiently for the purchaser's purposes, the matter should be referred to the General Electric Company.*

*To the extent required the products described herein meet applicable ANSI, IEEE and NEMA standards; but no such assurance is given with respect to local codes and ordinances because they vary greatly.*



SPECIAL RELAY 12HEA99AH	COIL, $\Omega$ D.7	CONTACT ARR'GMT	
	CYCLES DC	RESET POS:	
	VOLTS	125	OPEN CLOSED
230		NONE	1 TO 10
231		1	2 TO 10
232		1 &	23 TO 10
233		1	TO 34 TO 10
234		1	TO 45 TO 10
235		1	TO 56 TO 10
236		1	TO 67 TO 10
237		1	TO 78 TO 10
238		1	TO 89 & 10
239		1	TO 9 10
240		1	TO 10 NONE

**HANDLE END OF SWITCH**



**INTERNAL CONNECTIONS**  
NOTE: CONTACTS 11 & 12 SHOWN IN RESET POSITION.

**CAM ARRANGEMENT (F.V.)**  
"A" CAM NEAREST HANDLE

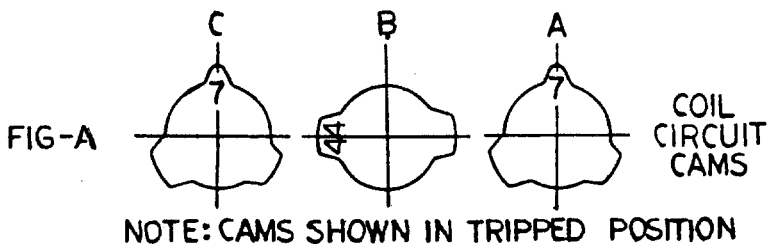


Figure 1 (12HEA99AH Sh.2 [2]) Outline, Panel Drilling and Internal Connections for Relay 12HEA99AH