



# INSTRUCTIONS

GEK-49835  
Insert Booklet GEH-2058

## RESET AUXILIARY RELAY

TYPE HEA

MODEL 12HEA99AP

### INTRODUCTION

These instructions plus those included in GEH-2058 form the instructions for this relay.

### DESCRIPTION

Relay 12HEA99AP is similar to 12HEA61 except having contacts 1, 3, 5, 7, 9, 11 and 15 closed in Position One NORMAL and contacts 2, 4, 6, 8, 10, 12, 13, 14, 16, and 17 closed in Position Two TRANSFER with handle removable in Position One (16SB1CC5(J)).

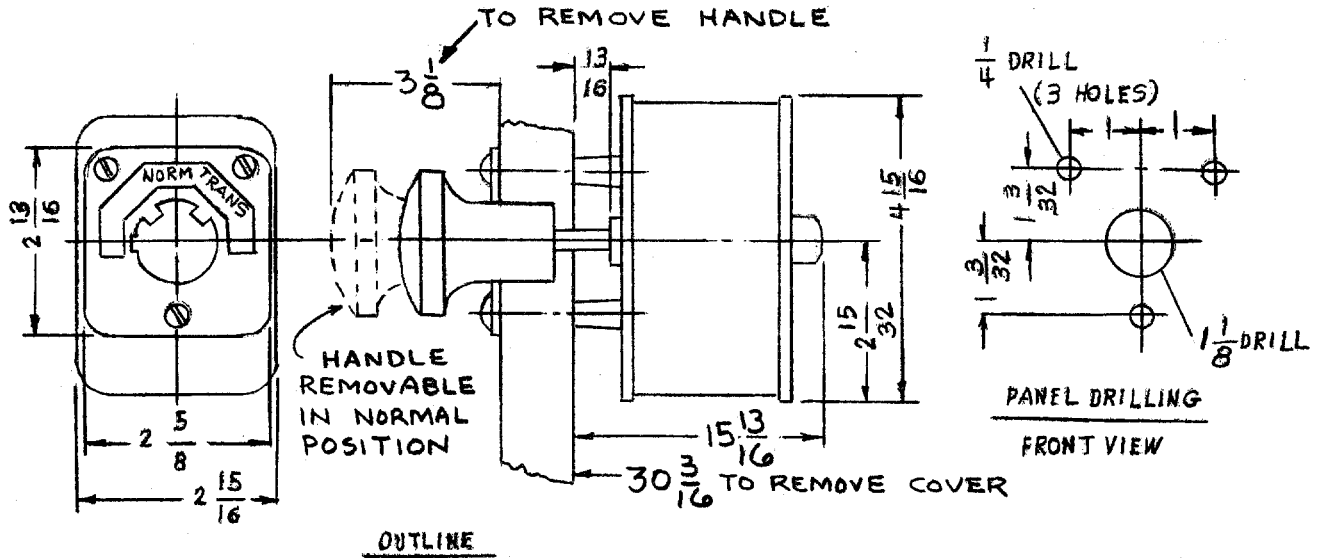
Refer to Figure 1 of this supplement for the internal connections, outline, panel drilling and escutcheon engraving.

*These instructions do not purport to cover all details or variations in equipment nor to provide for every possible contingency to be met in connection with installation, operation or maintenance. Should further information be desired or should particular problems arise which are not covered sufficiently for the purchaser's purposes, the matter should be referred to the General Electric Company.*

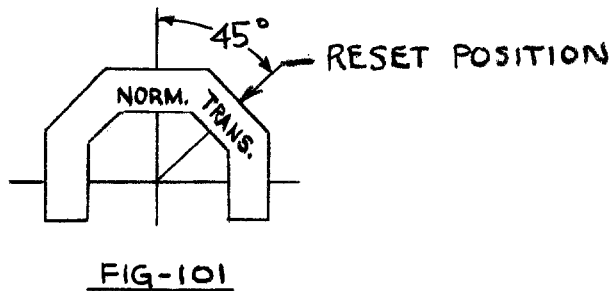
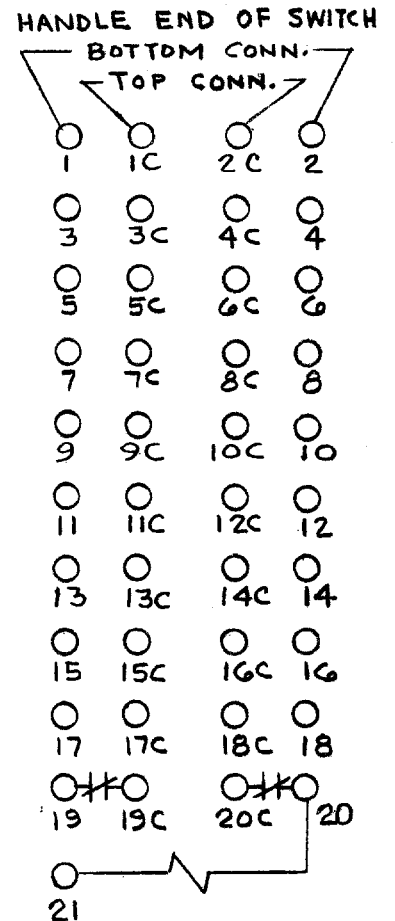
*To the extent required the products described herein meet applicable ANSI, IEEE and NEMA standards; but no such assurance is given with respect to local codes and ordinances because they vary greatly.*

**POWER SYSTEMS MANAGEMENT DEPARTMENT**

**GENERAL  ELECTRIC**



CYCLES	RELAY FORM NUMERAL											CONTACT ARR'GM'T		
	DC											RESET POS.		
	VOLTS	125										OPEN	CLOSED	OVERLAP
MODEL	001										1-3-5-7-9-11-15	2-4-6-8-10-12-13-14-16-18		
12HEA99AP														



INTERNAL CONNECTIONS  
 NOTE: CONTACTS 19 AND 20  
 SHOWN IN RESET POS.

Fig. 1 (12HEA99AP-1 Sh. 2) Internal Connections, Outline and Panel Drilling for the 12HEA99AP Relay