



## INSTRUCTIONS

GEK-86643  
Insert Booklet GEH-2058

### AUXILIARY RELAY TYPE HEA MODEL 12HEA99AZ(-)

#### INTRODUCTION

This instruction book, together with insert booklet GEH-2058, forms the instructions for the 12HEA99AZ(-) relays.

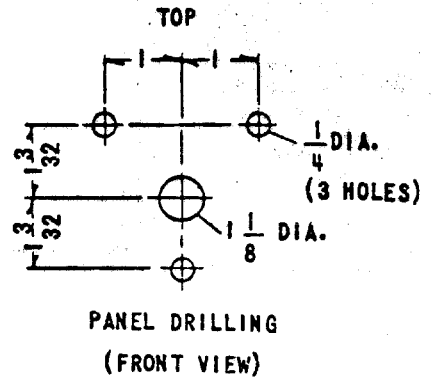
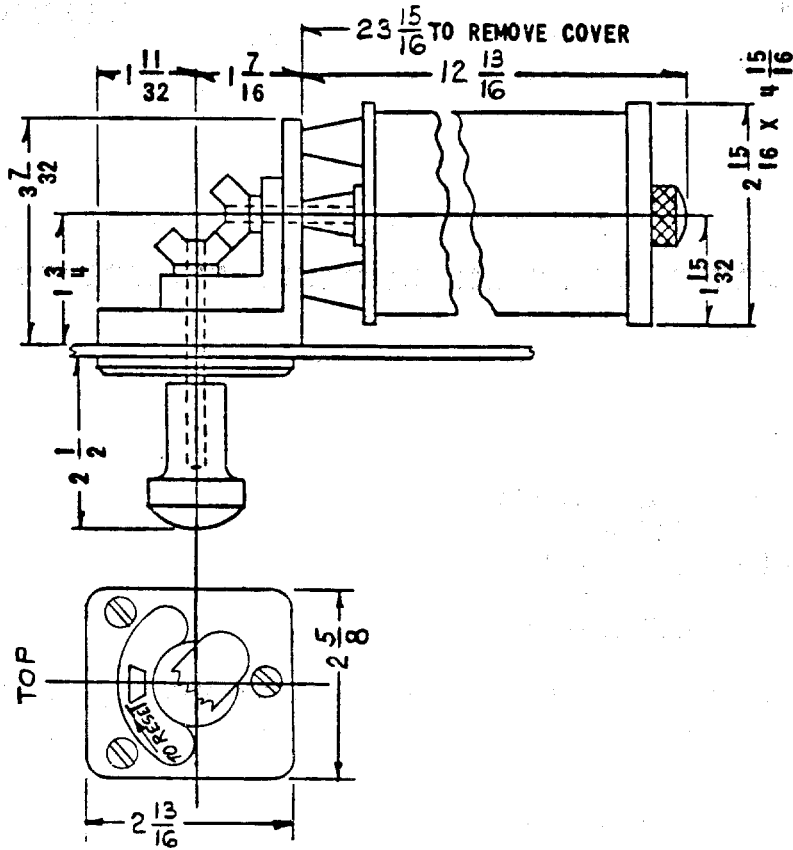
#### DESCRIPTION

The 12HEA99AZ(-) relay is similar to the 12HEA61BRD(-) relay, except the 12HEA99AZ(-) has a 9.0 ohm coil. The outline, panel drilling and internal connections are shown in Figure 1 of this booklet.

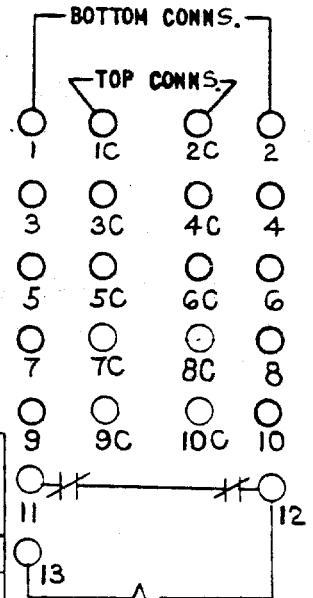
*These instructions do not purport to cover all details or variations in equipment nor to provide for every possible contingency to be met in connection with installation, operation or maintenance. Should further information be desired or should particular problems arise which are not covered sufficiently for the purchaser's purposes, the matter should be referred to the General Electric Company.*

*To the extent required the products described herein meet applicable ANSI, IEEE and NEMA standards; but no such assurance is given with respect to local codes and ordinances because they vary greatly.*

GEK-86643



HANDLE END OF SWITCH



INTERNAL CONNECTIONS  
NOTE-CONTACTS 11 & 12  
SHOWN IN RESET  
POSITION.

CYCLES	RELAY FORM NUMERAL										CONTACT ARRANGEMENT		
	DC	DC	DC	DC	DC	DC	DC	50/60	50/60	DC	RESET	POSITION	
VOLTS	250	125	43	24	32	230	220	115	230	430	12	OPEN	CLOSED
MODEL 12HEA99AZ	210	230	250	270	290	310	330	350	370	410	430	NONE	1 TO 10
	211	231	251	271	291	311	331	351	371	411	431	1	2 TO 10
	212	232	252	272	292	312	332	352	372	412	432	1 & 2	3 TO 10
	213	233	253	273	293	313	333	353	373	413	433	1 TO 3	4 TO 10
	214	234	254	274	294	314	334	354	374	414	434	1 TO 4	5 TO 10
	215	235	255	275	295	315	335	355	375	415	435	1 TO 5	6 TO 10
	216	236	256	276	296	316	336	356	376	416	436	1 TO 6	7 TO 10
	217	237	257	277	297	317	337	357	377	417	437	1 TO 7	8 TO 10
	218	238	258	278	298	318	338	358	378	418	438	1 TO 8	9 TO 10
	219	239	259	279	299	319	339	359	379	419	439	1 TO 9	10
	220	240	260	280	300	320	340	360	380	420	440	1 TO 10	NONE

Figure 1 (0195A9031-0) Outline, Panel Drilling and Internal Connections for the 12HEA99AZ(-) Relay