



INSTRUCTIONS

GEK-45472
Insert Booklet-GEH-1793

INSTANTANEOUS AUXILIARY RELAY

TYPE HGA

MODEL 12HGA99AC(-)

INTRODUCTION

This supplement plus GEH-1793 forms the instructions for special relay model 12HGA99AC(-).

DESCRIPTION

Special relay HGA99AC is similar to HGA11J described in the Insert Booklet except:

1. It has a shock resistant cover.
2. It has an adjustable armature gap provided by set screws on the moving contacts .
3. The Panel Drilling and Internal Connections are as shown by Figure 1 of this supplement.

Special relay HGA99AC was first made for use with Network Protectors.

These instructions do not purport to cover all details or variations in equipment nor to provide for every possible contingency to be met in connection with installation, operation or maintenance. Should further information be desired or should particular problems arise which are not covered sufficiently for the purchaser's purposes, the matter should be referred to the General Electric Company.

POWER SYSTEMS MANAGEMENT DEPARTMENT

GENERAL  ELECTRIC

PHILADELPHIA, PA.

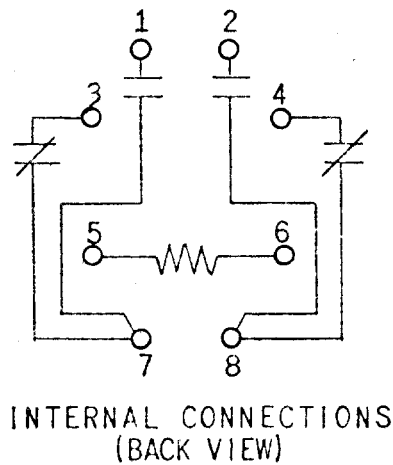
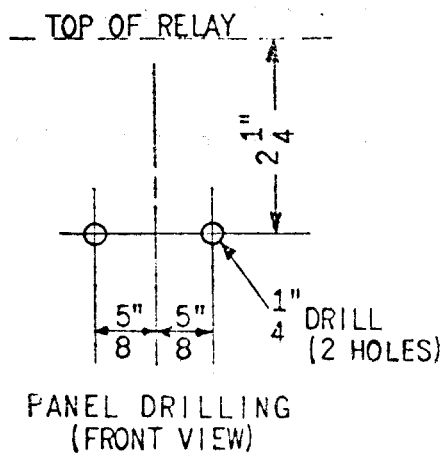
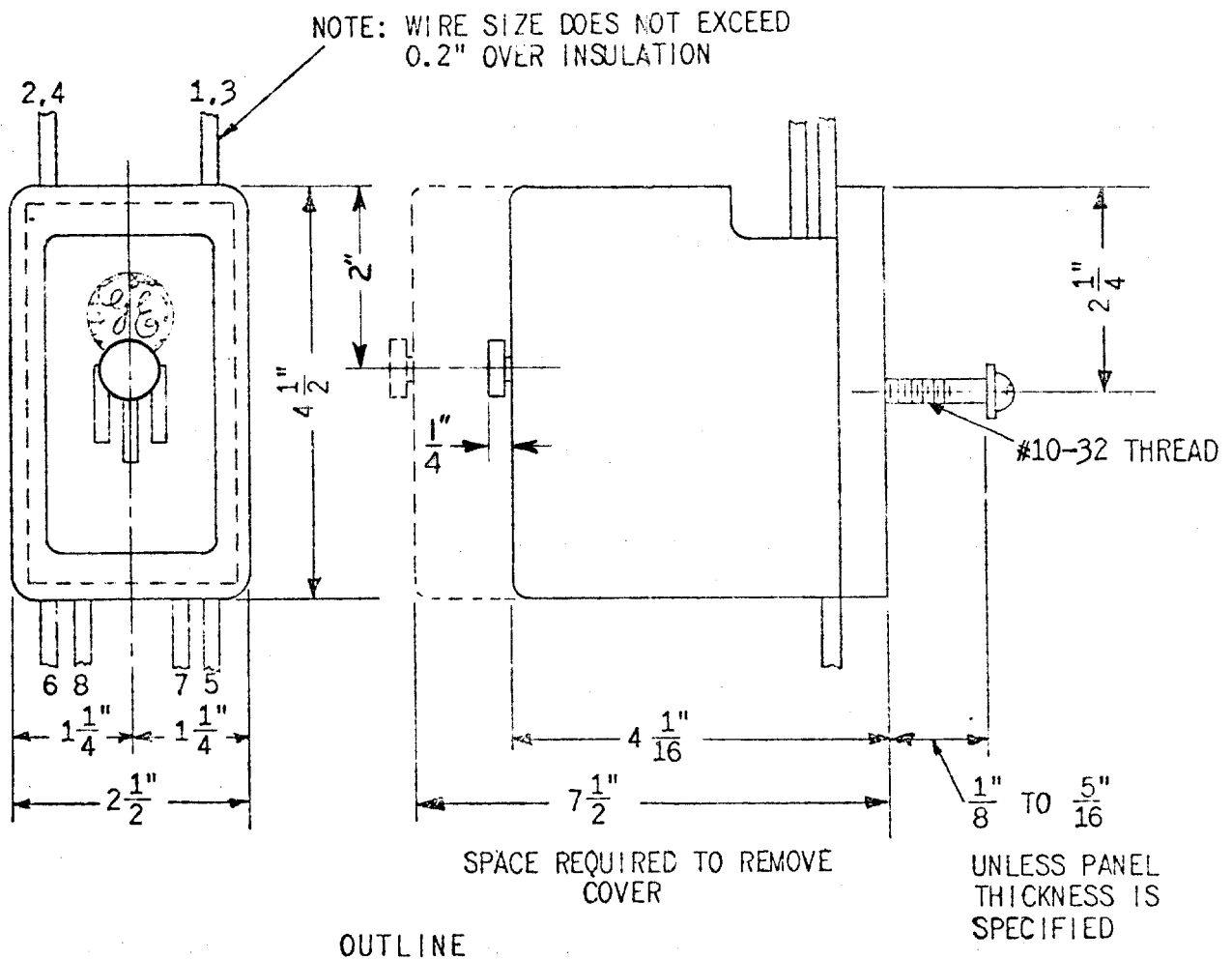


FIGURE 1)0257A9638-0) OUTLINE PANEL DRILLING AND INTERNAL CONNECTIONS FOR THE HGA99AC RELAY