



TIME OVERCURRENT RELAY

TYPE IAC99AC(-)A

INTRODUCTION

These instructions are a supplement to instruction book GEI-83956 which is included with this book. The combination of the two are the instructions for the type 12IAC99AC(-)A relay.

DESCRIPTION

Relay 12IAC99AC(-)A is similar to relay 12IAC60E(-)A except that it has two targets and seal-in units, one for each time-overcurrent unit.

RATINGS

The Time-Overcurrent Units ratings are given in instruction book GEI-83956.

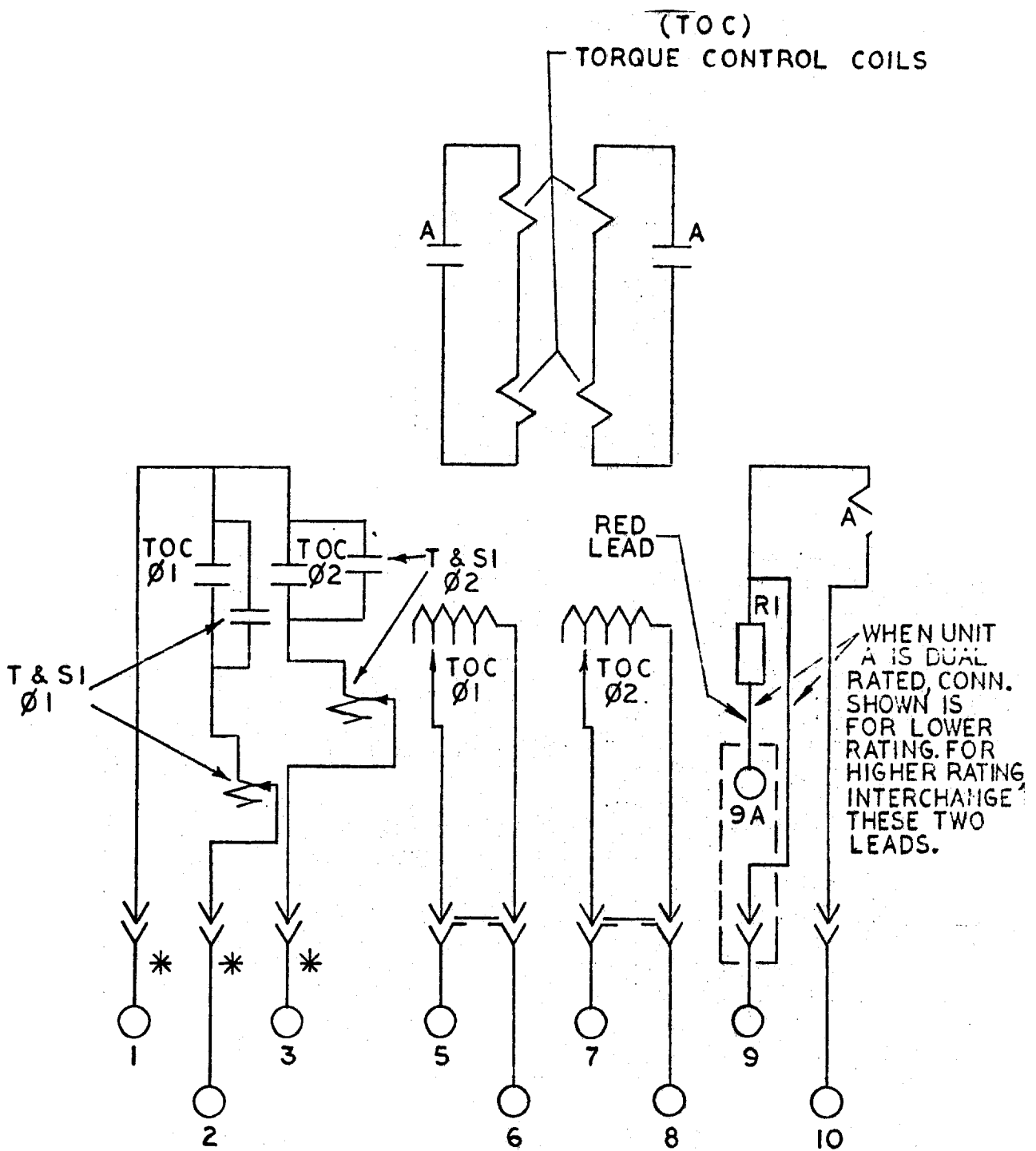
The Target and Seal-in Units ratings are given in the table below:

| CHARACTERISTIC | TAP | |
|--------------------------|------|------|
| | 0.2 | 2.0 |
| D.C. RESISTANCE (OHMS) | 7 | 0.13 |
| MIN. OPERATING (AMPS) | 0.2 | 2.0 |
| CARRY CONT. (AMPS) | 0.3 | 3.0 |
| CARRY 30 AMPS FOR (SEC.) | 0.03 | 4.0 |
| CARRY 10 AMPS FOR (SEC.) | 0.25 | 30.0 |
| 60 HZ IMPEDANCE (OHMS) | 52 | 0.53 |
| MIN. DROPOUT (AMPS) | 0.05 | 0.5 |

CONNECTIONS

The Internal Connections Diagram is given in Figure 1 of this supplement.

These instructions do not purport to cover all details or variations in equipment nor to provide for every possible contingency to be met in connection with installation, operation or maintenance. Should further information be desired or should particular problems arise which are not covered sufficiently for the purchaser's purposes, the matter should be referred to the General Electric Company.



* = SHORT FINGER

FIG. 1 (0257A8348-0) INTERNAL CONNECTIONS DIAGRAM FOR RELAY TYPE 12IAC99AC(-)A