

TIME OVERCURRENT RELAYTYPE IAC99AD(-)AINTRODUCTION

These instructions are a supplement to instruction book GEK-27872 which is included with this book. The combination of the two are the instructions for the Type 12IAC99AD(-)A relay.

DESCRIPTION

Relay 12IAC99AD(-)A is similar to relay 12IAC80P(-)A except that it has two targets and seal-in units, one for each time overcurrent unit.

RATINGS

The Time Overcurrent Units ratings are given in instruction book GEK-27872.

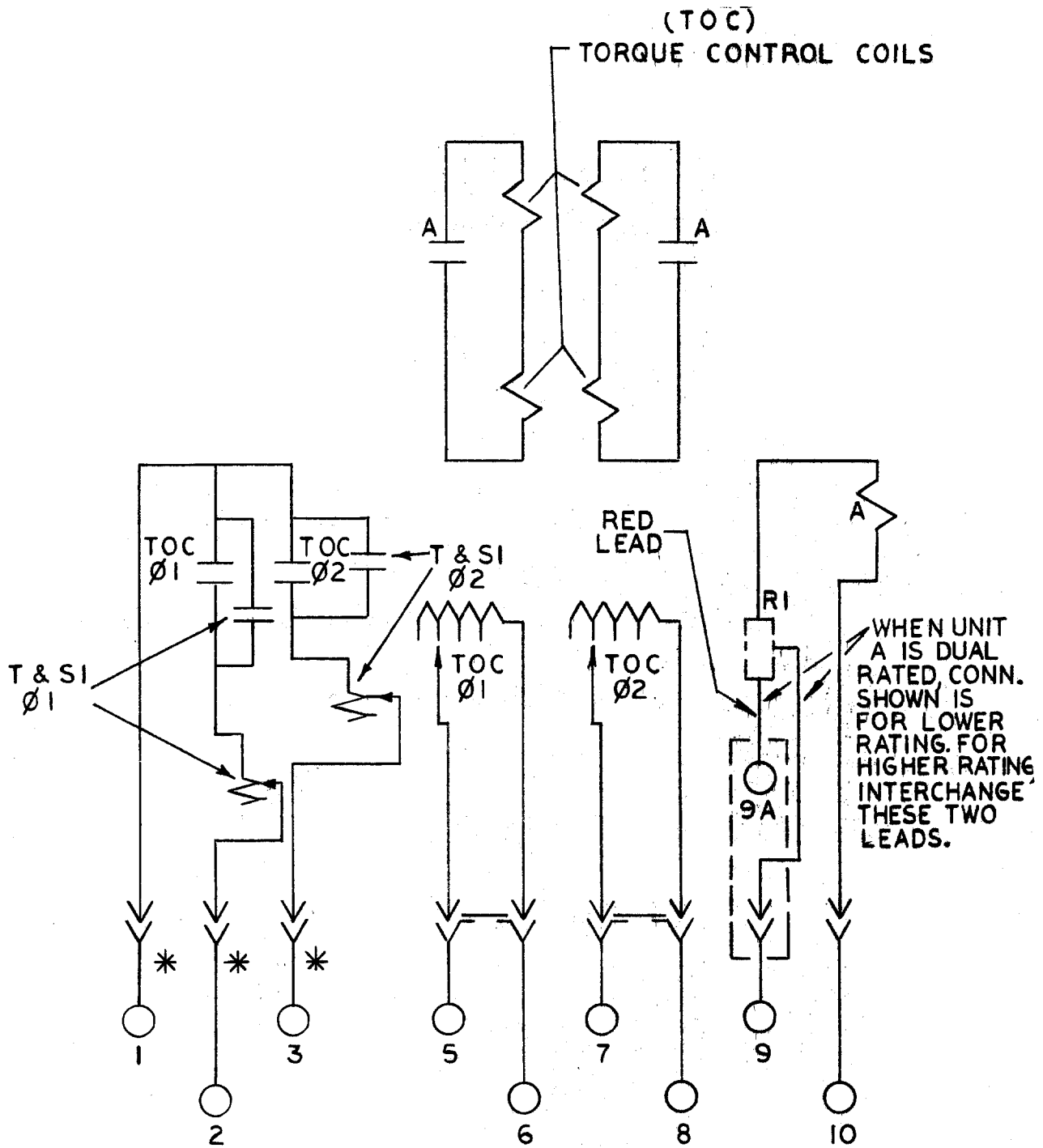
The target and seal-in ratings are given in the table below:

CHARACTERISTIC	TAP	
	0.2	2.0
D.C. RESISTANCE (OHMS)	7	0.13
MIN. OPERATING (AMPS)	0.2	2
CARRY CONT. (AMPS)	0.3	3
CARRY 30 AMPS FOR (SEC.)	0.03	4
CARRY 10 AMPS FOR (SEC.)	0.25	30
60 HZ IMPEDANCE (OHMS)	52	0.53
MIN. DROPOUT (AMPS)	0.05	0.5

CONNECTIONS

The Internal Connections Diagram is given in Figure 1 of this supplement.

These instructions do not purport to cover all details or variations in equipment nor to provide for every possible contingency to be met in connection with installation, operation or maintenance. Should further information be desired or should particular problems arise which are not covered sufficiently for the purchaser's purposes, the matter should be referred to the General Electric Company.



* = SHORT FINGER

FIG. 1 (0257A8347-0) INTERNAL CONNECTIONS DIAGRAM FOR RELAY TYPE 12IAC99AD(-)A