

INSTRUCTIONS



VOLTAGE RELAYS

TYPES

IAV53K

IAV53L

IAV53M

IAV53N

POWER SYSTEMS MANAGEMENT DEPARTMENT

GENERAL  **ELECTRIC**

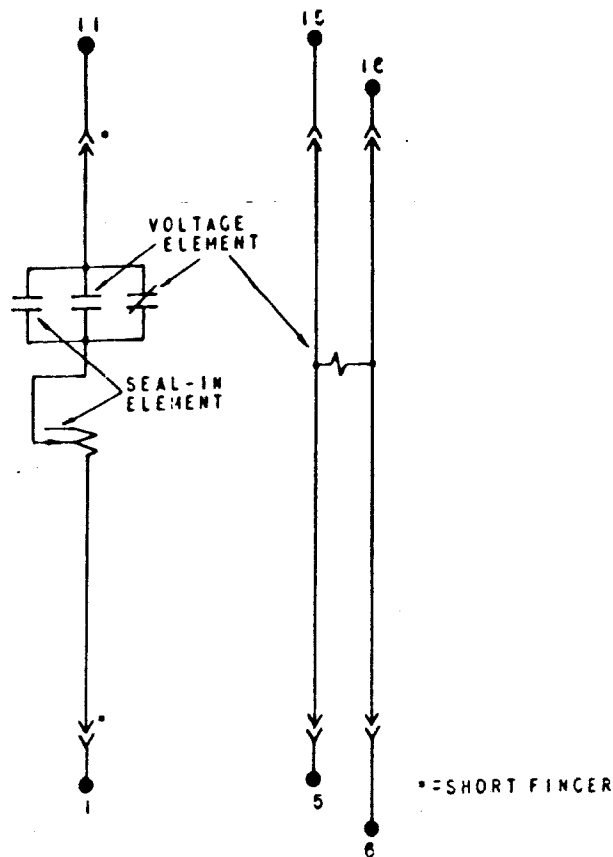
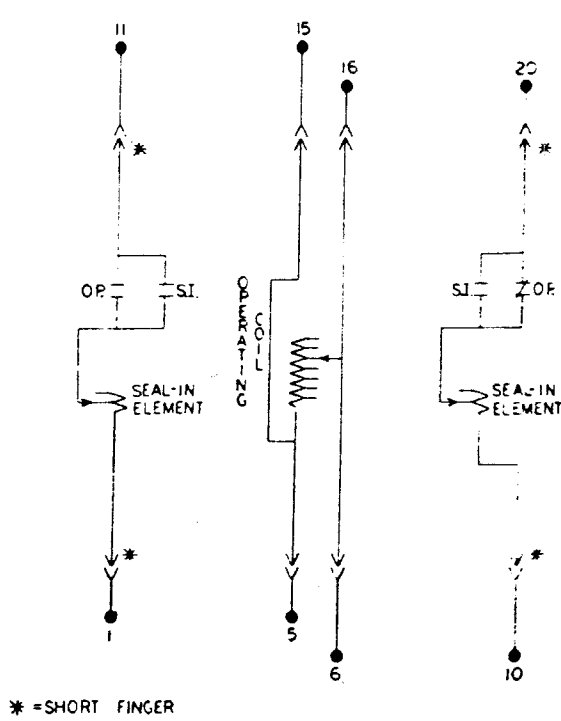


Fig. 1 (K-6556579-0) Internal Connection Diagram for Type IAV53M Relay



*Fig. 2 (K-6556475-1) Internal Connection Diagram for Type IAV53K Relay

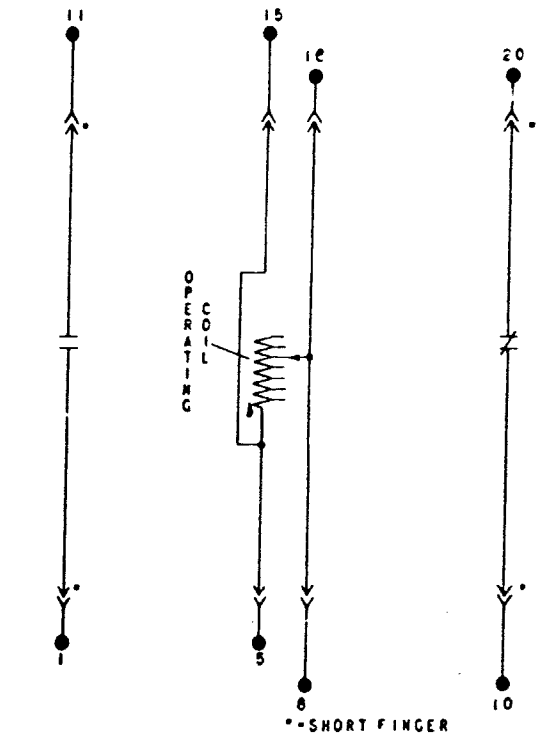


Fig. 3 (K-6556476-0) Internal Connection Diagram for Type IAV53L Relay

VOLTAGE RELAYS

TYPE IAV

INTRODUCTION

These instructions are a supplement to instruction book GEH-1814 which is included in this book. The combination of the two provides instructions for the relay types IAV53K, 53L, 53M and 53N.

The Type IAV53K is similar to the Type IAV53A, IAV53L to IAV53B, IAV53M to IAV53C and IAV53N to IAV53D. All four relays are in the double-end case with contacts connected between the upper and lower blocks and operating coils connected to both blocks. The purpose of this is to avoid false tripping of the breaker if the connecting plugs are removed and subsequently reinserted with the relay in the reset position, i.e., circuit opening contacts closed. Insertion of either plug causes the relay to pick up, both plugs must be in place before the contact circuits are completed.

INSTALLATION

MOUNTING

The relays should be mounted on a vertical surface. The outline and panel drilling dimensions are shown in Figure 4 of these instructions.

CONNECTIONS

The internal connection diagrams are shown in Figures 1, 2 and 3 of this supplement.

These instructions do not purport to cover all details or variations in equipment nor to provide for every possible contingency to be met in connection with installation, operation or maintenance. Should further information be desired or should particular problems arise which are not covered sufficiently for the purchaser's purposes, the matter should be referred to the General Electric Company.

To the extent required the products described herein meet applicable ANSI, IEEE and NEMA standards; but no such assurance is given with respect to local codes and ordinances because they vary greatly.

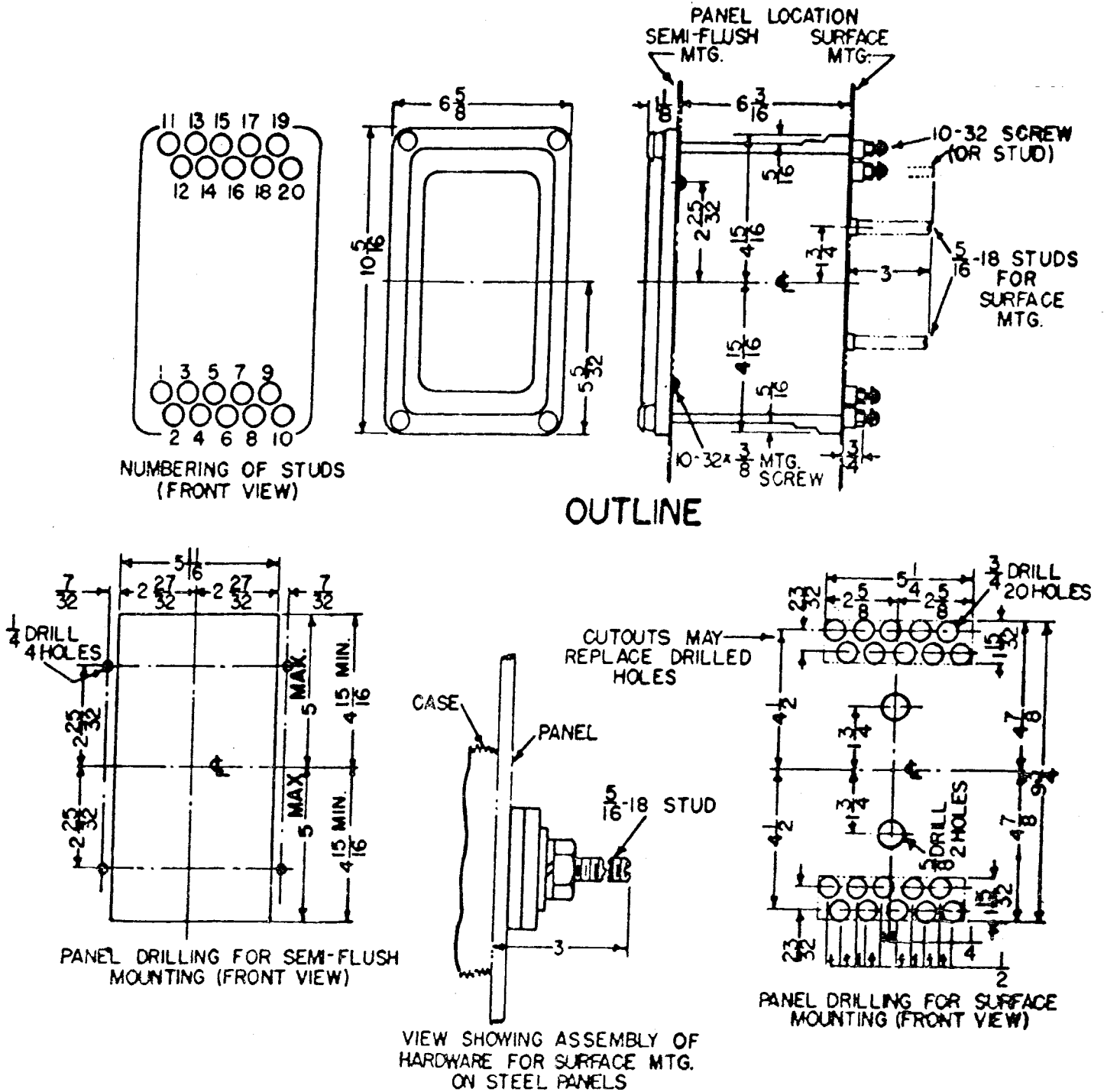


Fig. 4 (K-6209272-2) Outline and Panel Drilling Dimensions for Relay Types IAV53K, IAV53L and IAV53M Relays