



INSTRUCTIONS

GEK-86051A
Insert Booklet GEK-49822

GROUND DIRECTIONAL OVERCURRENT RELAYS

TYPE IBCG99B(-)A

INTRODUCTION

This instruction book, together with insert booklet GEK-49822, forms the instructions for the IBCG99B(-)A relays.

DESCRIPTION

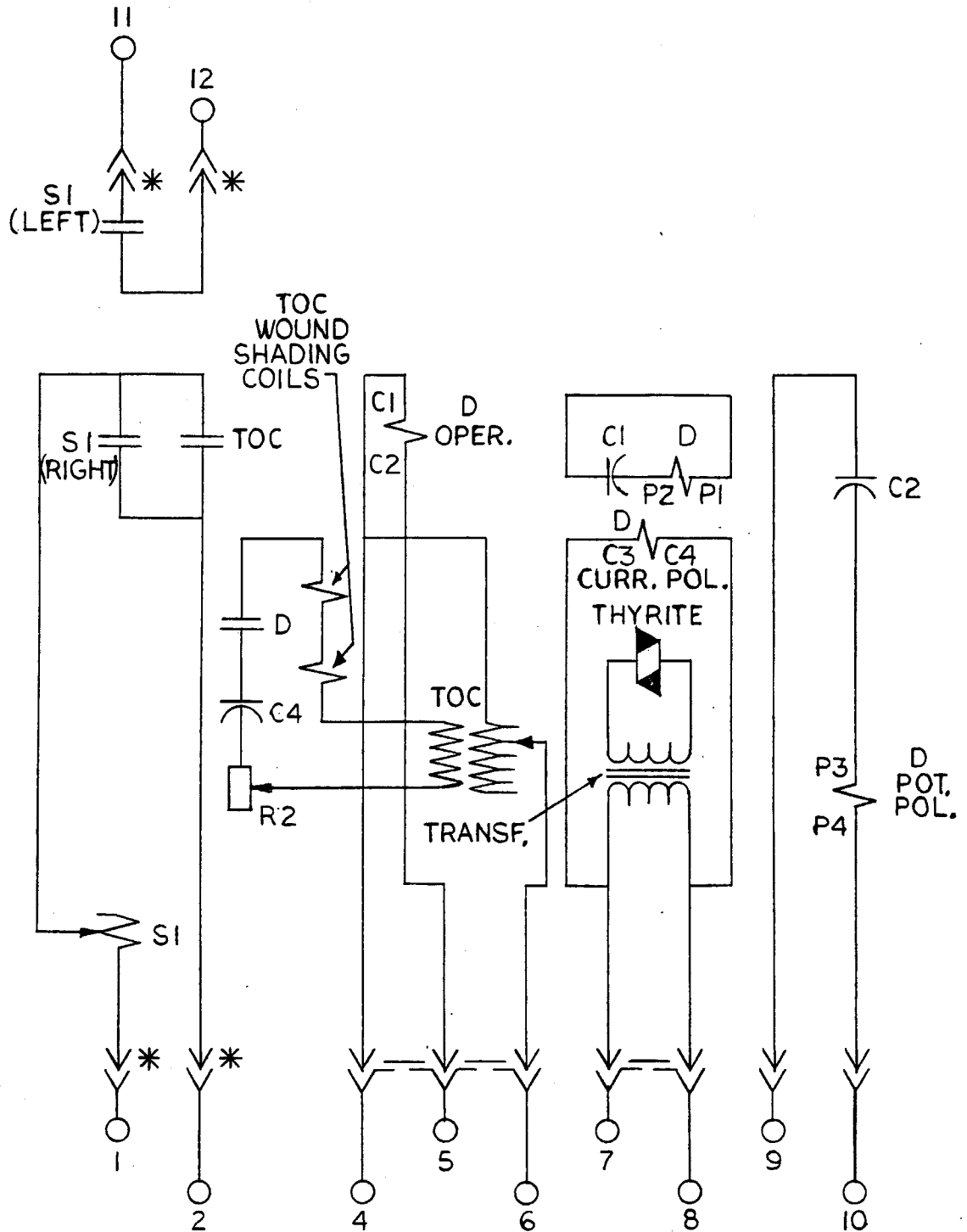
The IBCG99B(-)A ground directional overcurrent relay is similar to the IBCG77M(-)A type relays except for the following two features:

1. The seal-in unit has two electrically separate contacts. The right side set of the seal-in unit contacts (viewed from front of relay) is used as part of the seal-in circuit. The left side set is connected between terminals 11 and 12 and is not part of the seal-in circuit. The internal connections are shown in Fig. 1 of this book.
2. The IBCG99B(-)A relays are mounted in a standard M2 size drawout case. The outline and panel drilling dimensions are shown in Fig. 2 of this book.

*Indicates Revision

These instructions do not purport to cover all details or variations in equipment nor to provide for every possible contingency to be met in connection with installation, operation or maintenance. Should further information be desired or should particular problems arise which are not covered sufficiently for the purchaser's purposes, the matter should be referred to the General Electric Company.

To the extent required the products described herein meet applicable ANSI, IEEE and NEMA standards; but no such assurance is given with respect to local codes and ordinances because they vary greatly.



SI = SEAL IN UNIT
 TOC = TIME OVERCURRENT UNIT
 D = DIRECTIONAL UNIT

* = SHORT FINGER

Fig. 1 (0285A6600-0) Internal Connections for the IBCG99B(-)A Relay (Front View)

*

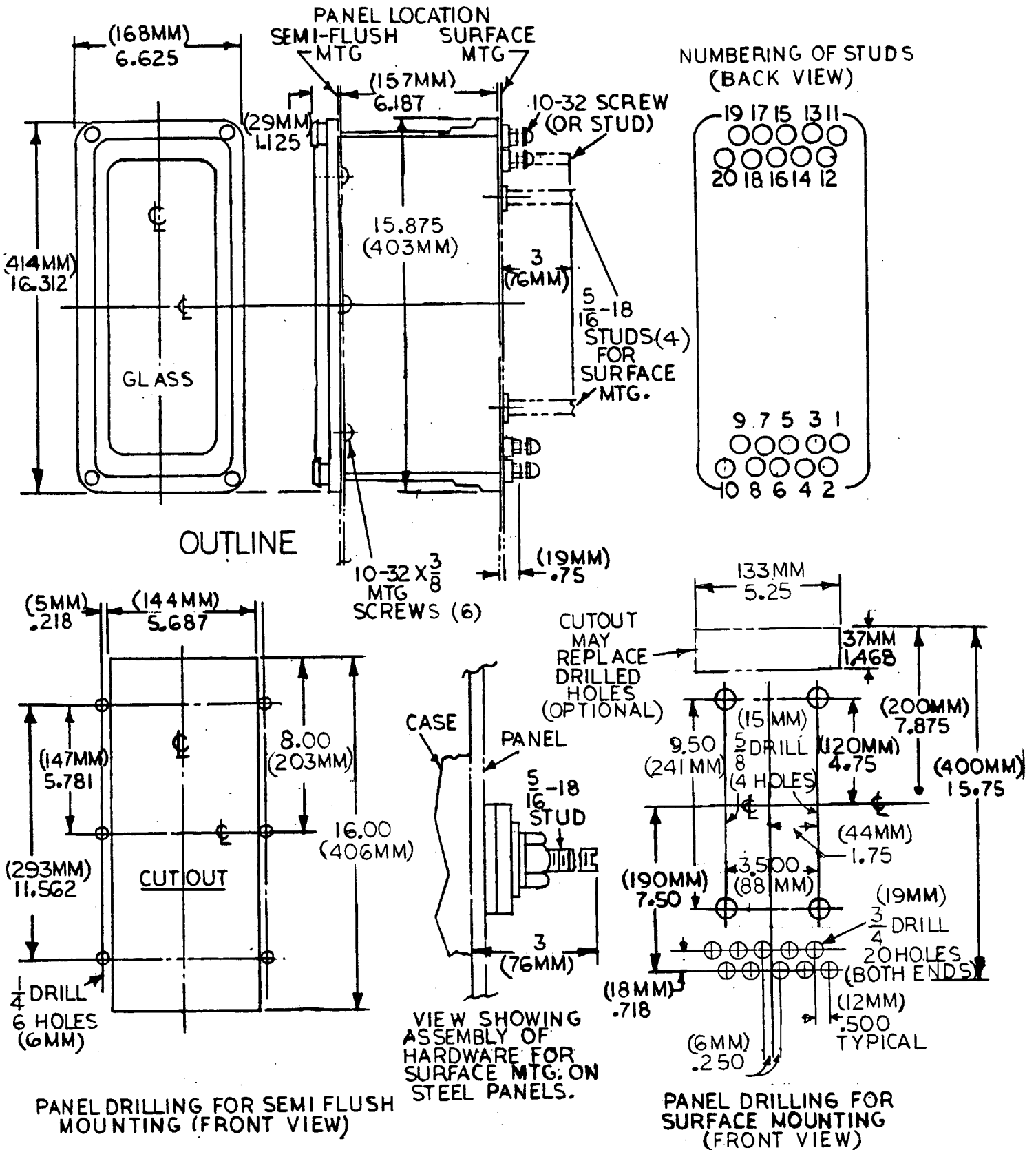


Fig. 2 (6209274-0) Outline and Panel Drilling Dimensions for the IBCG99B(-)A Relay

**GENERAL ELECTRIC COMPANY
POWER SYSTEMS MANAGEMENT BUSINESS DEPT.
MALVERN, PA. 19355**

GENERAL  ELECTRIC