



INSTRUCTIONS

GEK-86699
Insert Booklet GEK-49822

**GROUND DIRECTIONAL OVERCURRENT RELAY
TYPE IBCG
Model 0178A7372G(-)**

GENERAL  ELECTRIC

INTRODUCTION

This instruction book, together with insert booklet GEK-49822, forms the instructions for the 0178A7372G(-) relay.

DESCRIPTION

The 0178A7372G(-) relay is similar to the IBCG51E(-)A relay. The 0178A7372G(-) Rev. A relay is similar to the IBCG51M(-)A relay. The exception in both cases is a red jumper between terminals 18-19 on the relay that can be removed so that the relay can be torque-controlled by the directional unit and an external relay contact.

The difference between the two models is that the 0128A7372G(-) potential circuit is intermittently rated for four minutes at the voltage listed on the nameplate, while the 0128A7372G(-)Rev.A potential circuit is continuously rated at the voltage listed on the nameplate.

The Internal Connections diagram is shown in Figure 1 of this booklet.

These instructions do not purport to cover all details or variations in equipment nor to provide for every possible contingency to be met in connection with installation, operation or maintenance. Should further information be desired or should particular problems arise which are not covered sufficiently for the purchaser's purposes, the matter should be referred to the General Electric Company.

To the extent required the products described herein meet applicable ANSI, IEEE and NEMA standards; but no such assurance is given with respect to local codes and ordinances because they vary greatly.

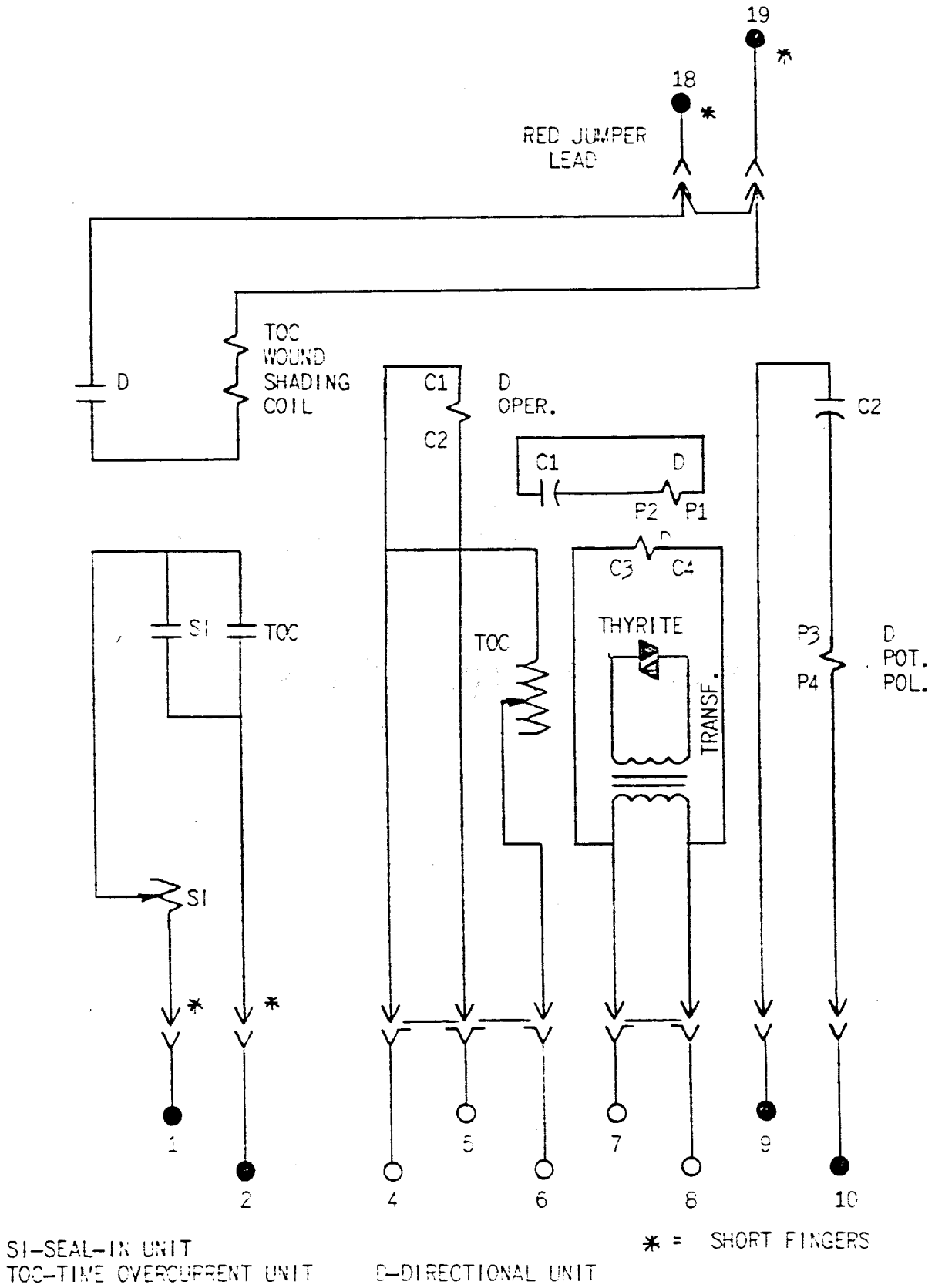


Figure 1

0178A9150 Internal Connections Diagram for the 0178A7372G(-) Relay

**GENERAL ELECTRIC COMPANY
POWER SYSTEMS MANAGEMENT BUSINESS DEPT.
MALVERN, PA 19355**

GENERAL  ELECTRIC