



INSTRUCTIONS

GEK-45448
Insert GEK-36789

OUT OF STEP ANGLE IMPEDANCE RELAY

(OFFSET MHO AND NAA19B)

12NAA99AJ(-)A

INTRODUCTION

These instructions plus those included in GEK-36789 form the instructions for this relay.

DESCRIPTION

Relay NAA99AJ(-)A relay is similar to relay 0208A8440 except for the contact circuit arrangement of X1-X5 units. The interconnections of these contacts are shown on the internal connection diagram in Figure 1 of these instructions. This internal wiring permits use of the relay in the modified out-of-step protection scheme covered by the external connection diagram in Figure 2.

These instructions do not purport to cover all details or variations in equipment nor to provide for every possible contingency to be met in connection with installation, operation or maintenance. Should further information be desired or should particular problems arise which are not covered sufficiently for the purchaser's purposes, the matter should be referred to the General Electric Company.

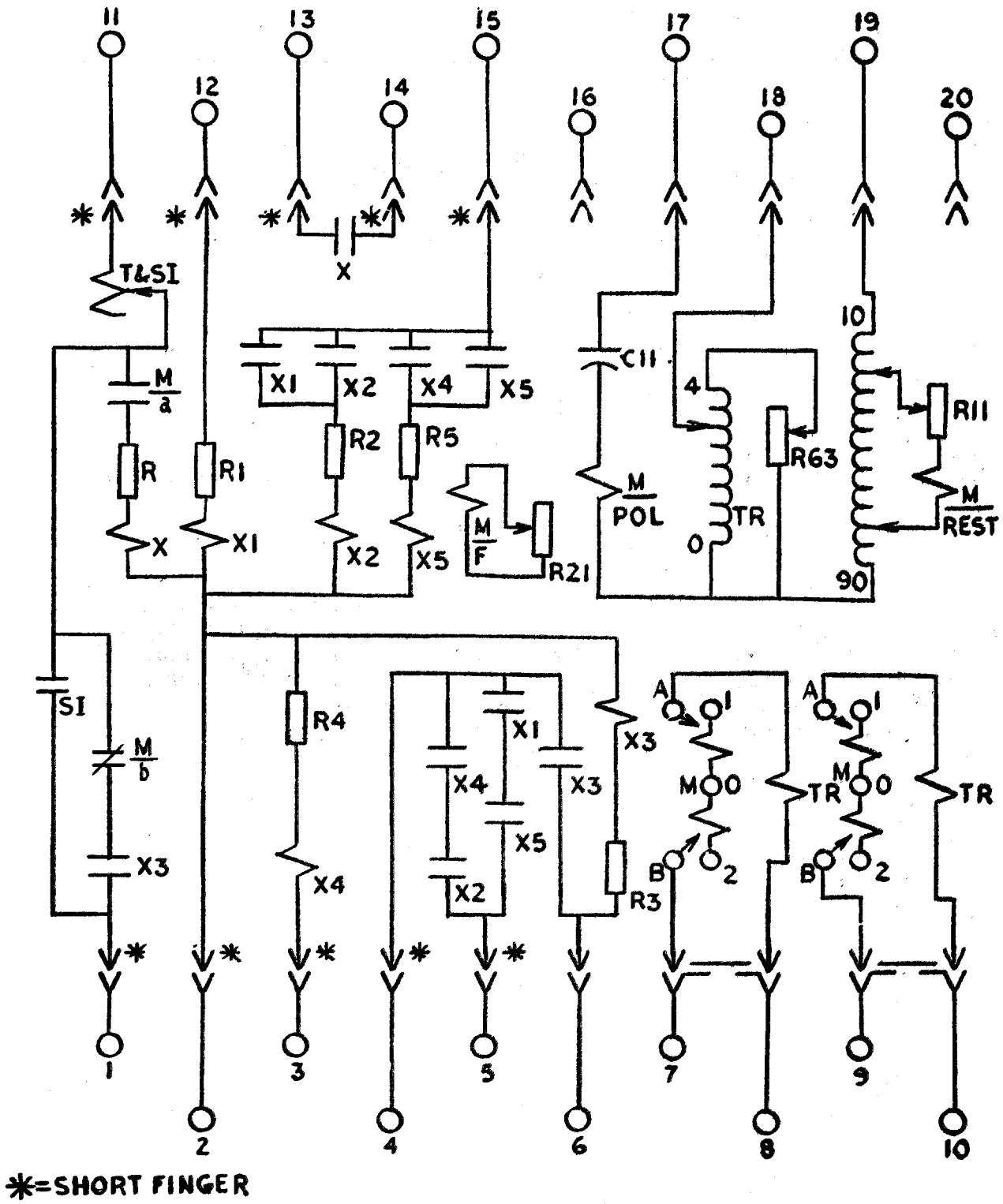
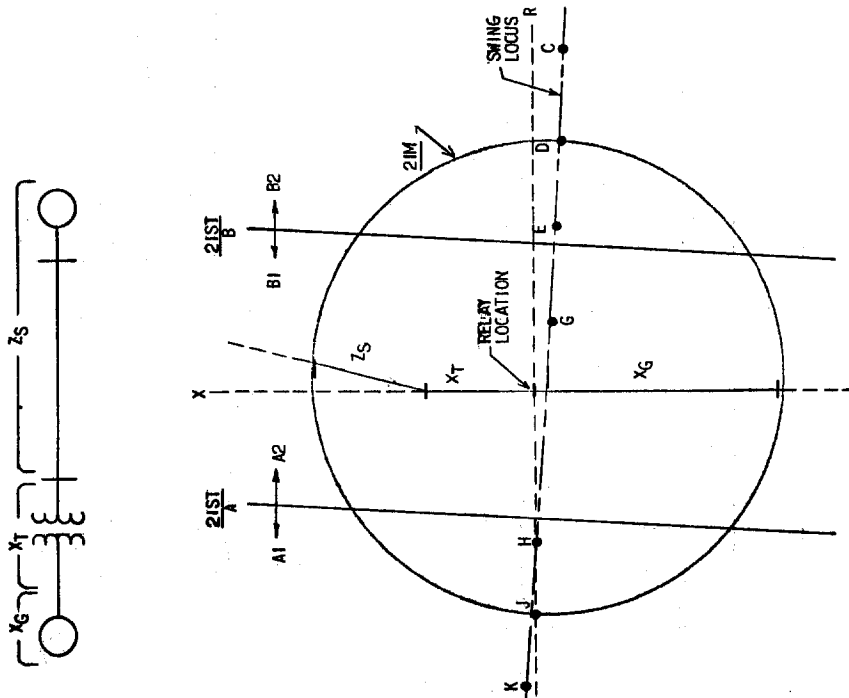
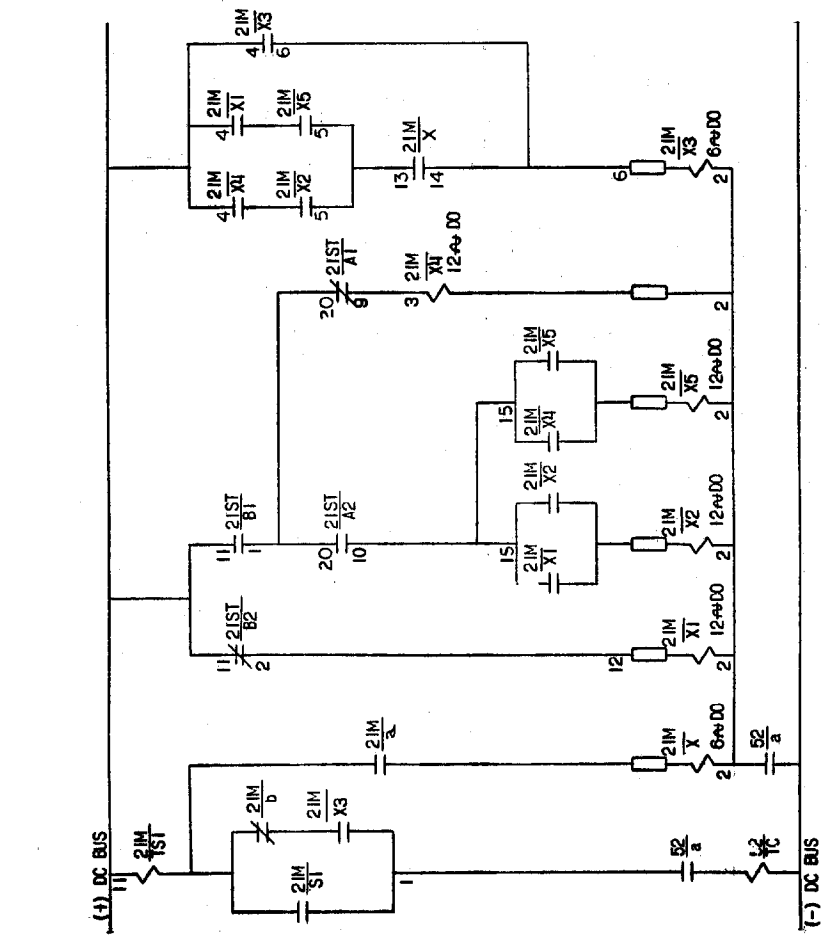


Fig. 1 (0257A9609-0) Internal Connection Diagram for the NAA99AJ(-)A Relay



R-X DIAGRAM
 NOTE: A1, A2, B1, B2 ARROWS SHOW
 DIRECTION OF IMPEDANCE FOR
 CONTACT CLOSURE

FIG. 2A (0108B8930-0 SH. 2) External Connection Diagram for the NAA99AJ(-)A Relay.