



INSTRUCTIONS

GEK-65532
Insert Booklet GEI-83905

DC AUXILIARY TYPE NGA15AA FORM 3 AND UP

INTRODUCTION

This supplement in addition to GEI-83905 constitutes the instructions for the NGA15AA relay.

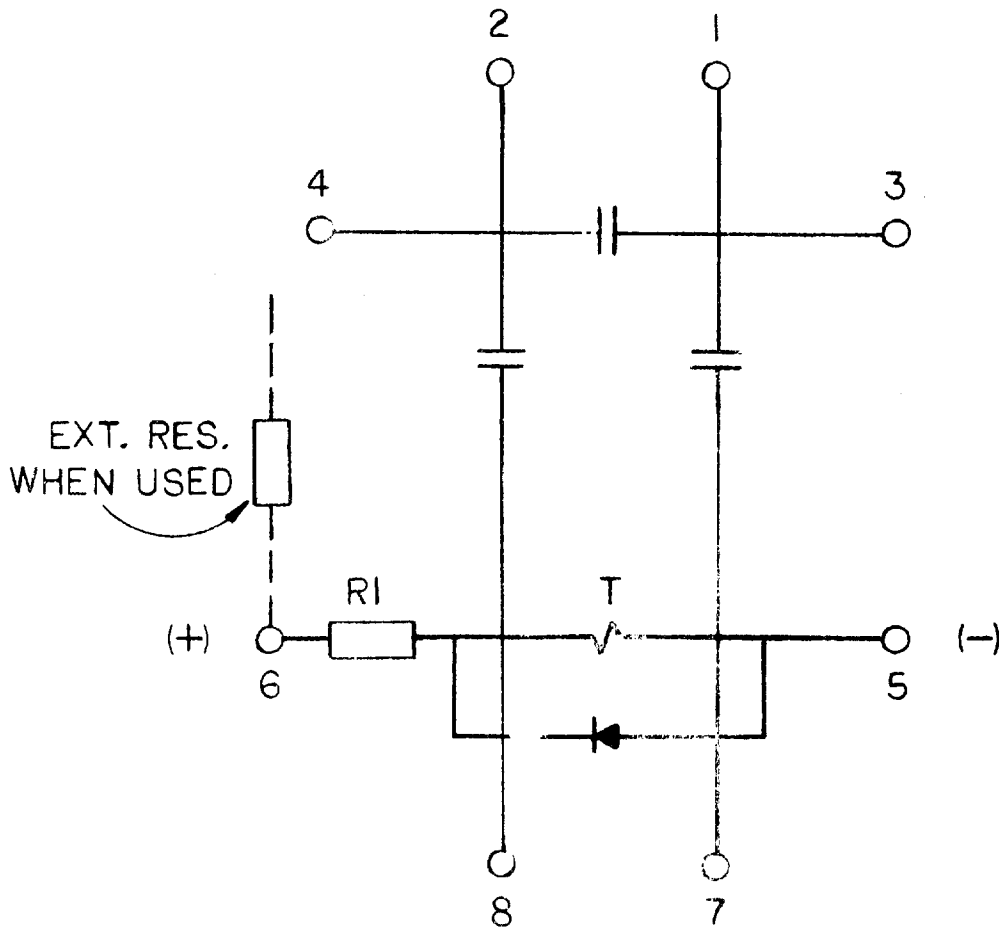
DESCRIPTION

Relay NGA15AA is similar to relay NGA15L except as follows:

1. Relay NGA15AA contains a telephone relay which has three normally open contacts.
2. The internal connections are as shown in Fig. 1 of this supplement.

These instructions do not purport to cover all details or variations in equipment nor to provide for every possible contingency to be met in connection with installation, operation or maintenance. Should further information be desired or should particular problems arise which are not covered sufficiently for the purchaser's purposes, the matter should be referred to the General Electric Company.

To the extent required the products described herein meet applicable ANSI, IEEE and NEMA standards; but no such assurance is given with respect to local codes and ordinances because they vary greatly.



MODEL	DC VOLTS	T OHMS	R1	EXT. RES.
12NGA15AH1 12NGA15AA3	125	1K Ω	2.5K	—
12NGA15AH2 12NGA15AA4	250	1K Ω	2.5K	3.5K

Fig. 1 (0273A9174-1) Internal Connections for NGA15AA Relay