



INSTRUCTIONS

GEK-90668

INSERT BOOKLET GEI-83905

DC AUXILIARY RELAY

TYPE NGA15AL

INTRODUCTION

This supplement and GEI-83905, together, form the instructions for the 12NGA15AL(-) relay.

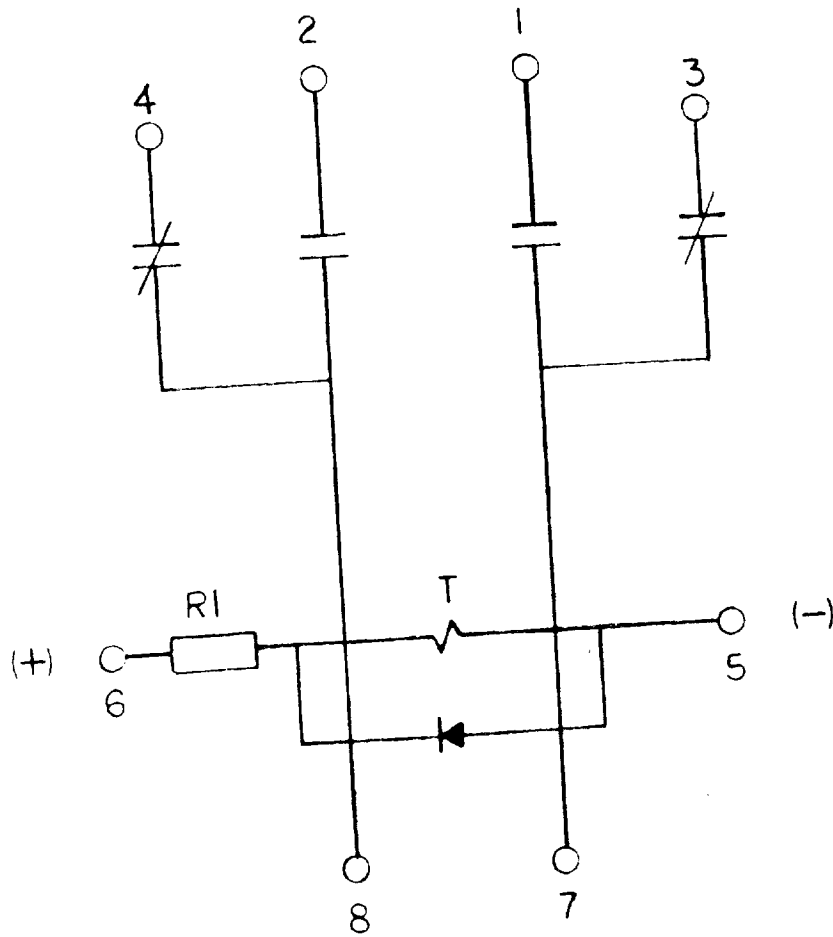
DESCRIPTION

The 12NGA15AL(-) is similar to the 12NGA15A(-) relay except:

1. Voltage is continuously rated.
2. Operating time is 16 milliseconds maximum.
3. Dropout time is between 116 and 167 milliseconds.
4. The internal connections diagram is shown on page 2 of this booklet.

These instructions do not purport to cover all details or variations in equipment nor provide for every possible contingency to be met in connection with installation, operation or maintenance. Should further information be desired or should particular problems arise which are not covered sufficiently for the purchaser's purposes, the matter should be referred to the General Electric Company.

To the extent required the products described herein meet applicable ANSI, IEEE and NEMA standards; but no such assurance is given with respect to local codes and ordinances because they vary greatly.



MODEL	DC VOLTS	T OHMS	R1	EXT. RES.
12NGA15AL1	125	1K Ω	2.5K	-

Figure 1 (0286A2814) Internal Connections Diagram for 12NGA15AL(-) Relay