



UNDervOLTAGE RELAY TYPE NGV11C

INTRODUCTION

These instructions are a supplement to Instruction Book GEI-90805 which is included in this book. The combination of the two forms instructions for the NGV11C relay.

DESCRIPTION

The NGV11C relay is similar to the NGV11A relay except the internal connections are in accordance with Fig. 1 of this supplement. All instructions for the NGV11A relay in GEI-90805 apply to the NGV11C relay.

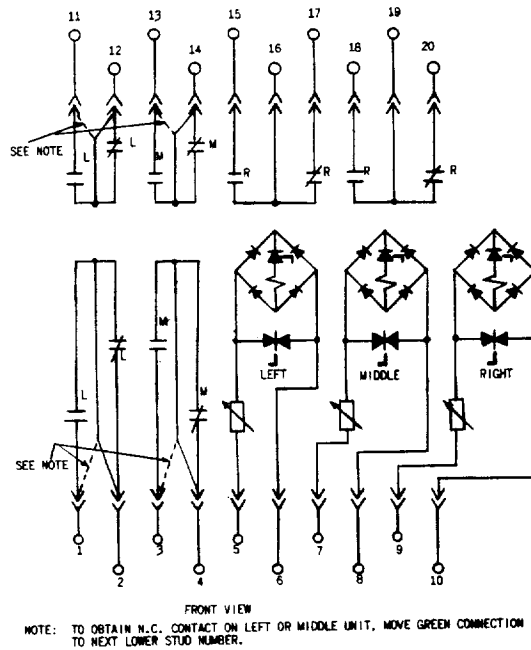


Fig. 1 (0165A7629-0) Internal Connections of Relay Type NGV11C

These instructions do not purport to cover all details or variations in equipment nor to provide for every possible contingency to be met in connection with installation, operation or maintenance. Should further information be desired or should particular problems arise which are not covered sufficiently for the purchaser's purposes, the matter should be referred to the General Electric Company.

LOW VOLTAGE SWITCHGEAR DEPARTMENT



PHILADELPHIA, PA.

