



A-C UNDERVOLTAGE RELAY
TYPE NGV
MODEL 12NGV28B(-)A

INTRODUCTION

These instructions plus those included in GEI-90805 form the instructions for this relay.

DESCRIPTION

Relay model NGV28B(-)A is similar to model NGV13B(-)A except the coil circuit is wired to studs 15-16 of an S2 case. This allows the wiring of coil and contact circuits to be brought out at separate case and cradle blocks.

The table below lists the ratings presently available on the NGV28B(-)A relay:

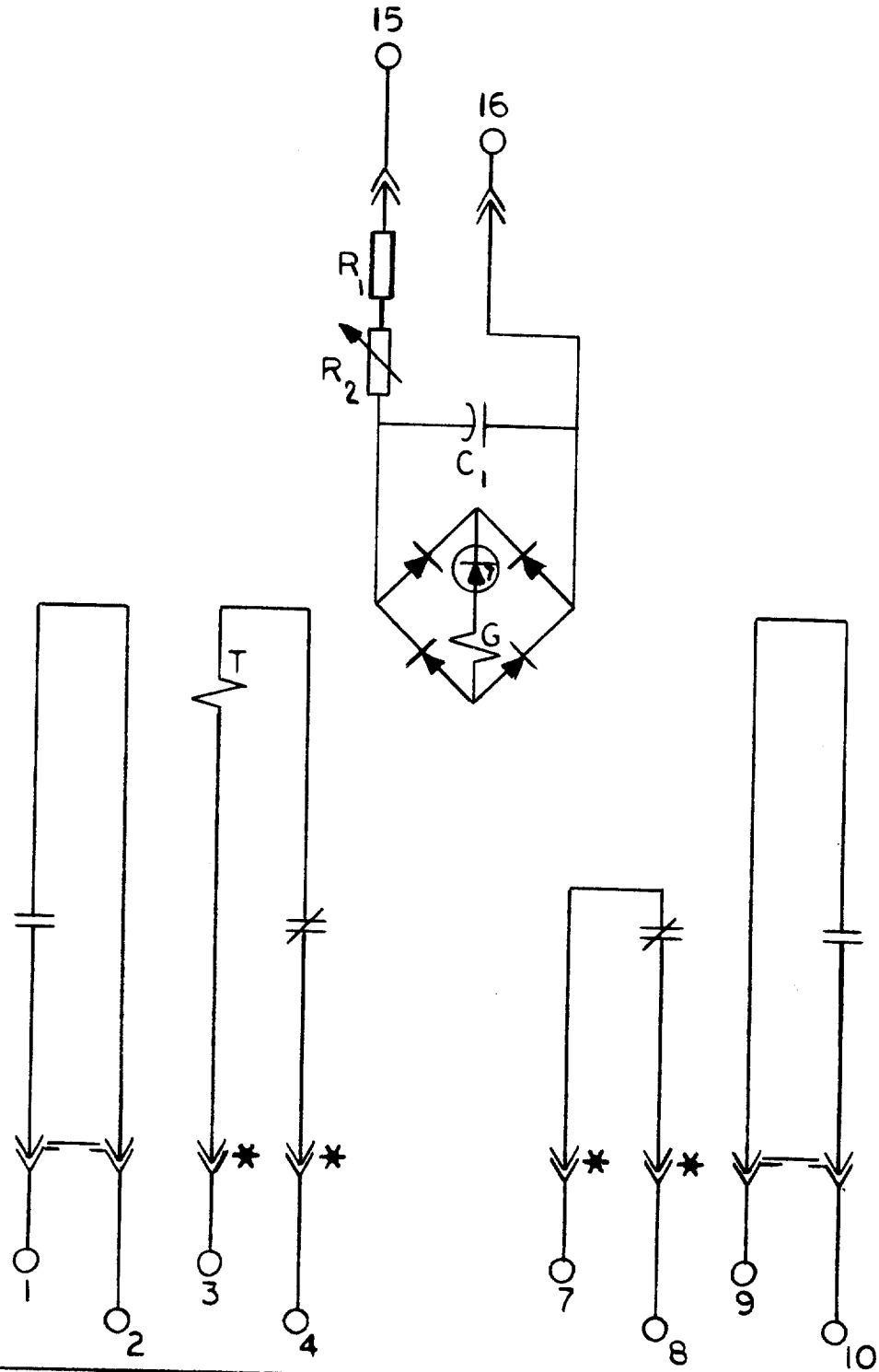
NGV28B(-)A FORM	VOLTS CONT.	FREQUENCY (HERTZ)	DROPOUT VOLTS CALIBRATION RANGE
1	120	60	70 - 100

Figure 1 of this supplement is the internal connections diagram for this relay.

Figure 2 of this supplement gives the outline and panel drilling dimensions for the S2 case.

These instructions do not purport to cover all details or variations in equipment nor to provide for every possible contingency to be met in connection with installation, operation or maintenance. Should further information be desired or should particular problems arise which are not covered sufficiently for the purchaser's purposes, the matter should be referred to the General Electric Company.

To the extent required the products described herein meet applicable ANSI, IEEE and NEMA standards; but no such assurance is given with respect to local codes and ordinances because they vary greatly.



FORM	R1 (OHMS)	R2 (OHMS)	G (OHMS)	C1 Mfd
I	1K	5K	1.3K	.05

* = SHORT FINGER

FIG. 1 (269A3034- 0) INTERNAL CONNECTIONS DIAGRAM FOR THE NGV28B(-)A RELAY.

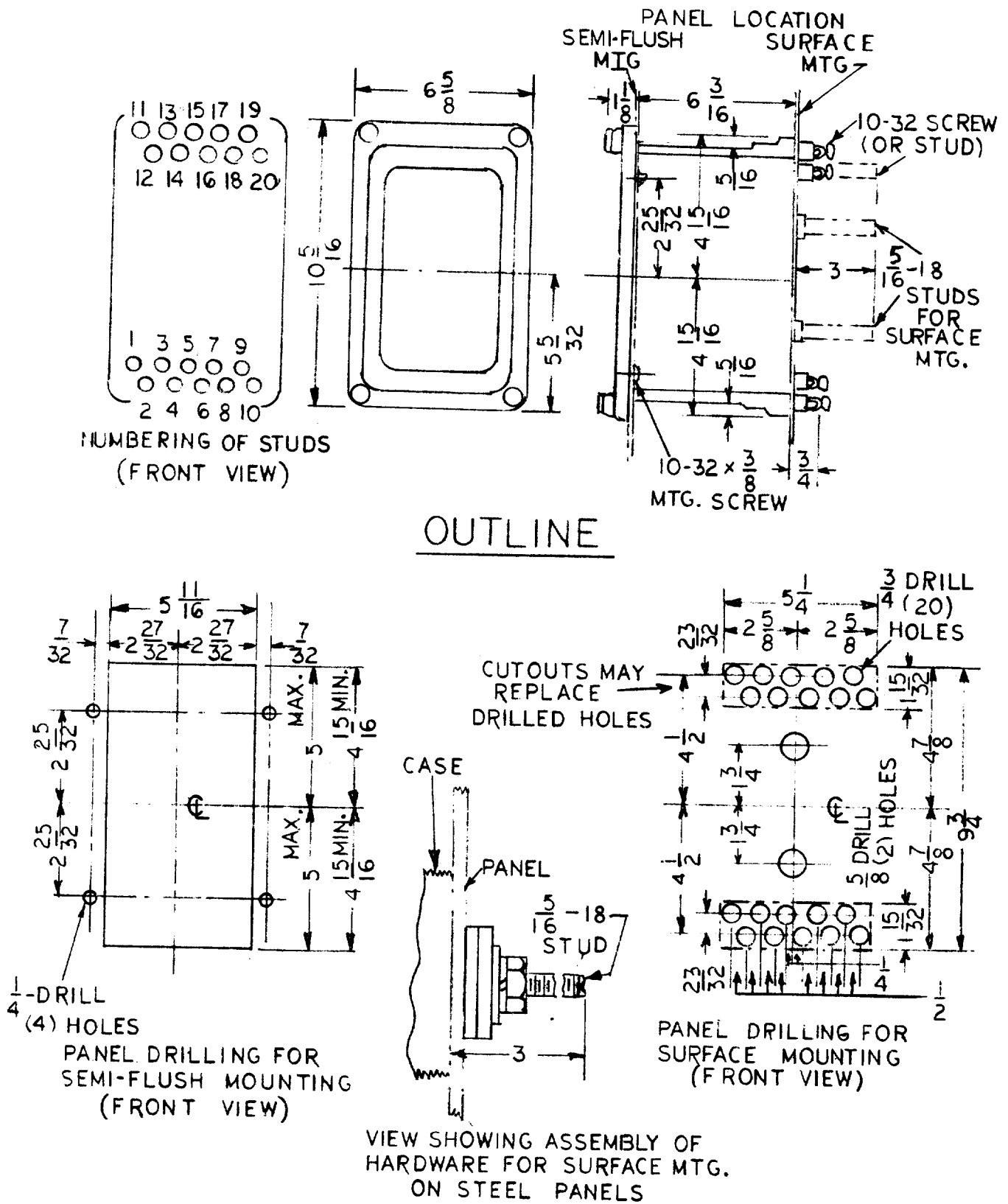


FIG. 2 (K-6209272) OUTLINE AND PANEL DRILLING DIMENSIONS FOR THE NGV28B(-)A RELAY-SIZE S2 CASE.



GE Power Management

**215 Anderson Avenue
Markham, Ontario
Canada L6E 1B3
Tel: (905) 294-6222
Fax: (905) 201-2098
www.ge.com/indsys/pm**