



INSTRUCTIONS

GEK-65672
Insert Book GEI-98326

AC VOLTAGE RELAY TYPE NGV MODEL 12NGV99AL(-)A

INTRODUCTION

The instructions in this booklet along with those in GEI-98326 form the instructions for the 12NGV99AL(-)A relay.

DESCRIPTION

The 12NGV99AL(-)A relay is similar to the 12NGV22A(-)A relay except that the normally closed contacts between studs 3 and 13 are connected in series. The relays are calibrated in pickup volts with a dropout voltage of 90 percent or higher.

Fig. 1 Internal Connections Diagram

Fig. 2 Outline and Panel Drilling

These instructions do not purport to cover all details or variations in equipment nor to provide for every possible contingency to be met in connection with installation, operation or maintenance. Should further information be desired or should particular problems arise which are not covered sufficiently for the purchaser's purposes, the matter should be referred to the General Electric Company.

To the extent required the products described herein meet applicable ANSI, IEEE and NEMA standards; but no such assurance is given with respect to local codes and ordinances because they vary greatly.

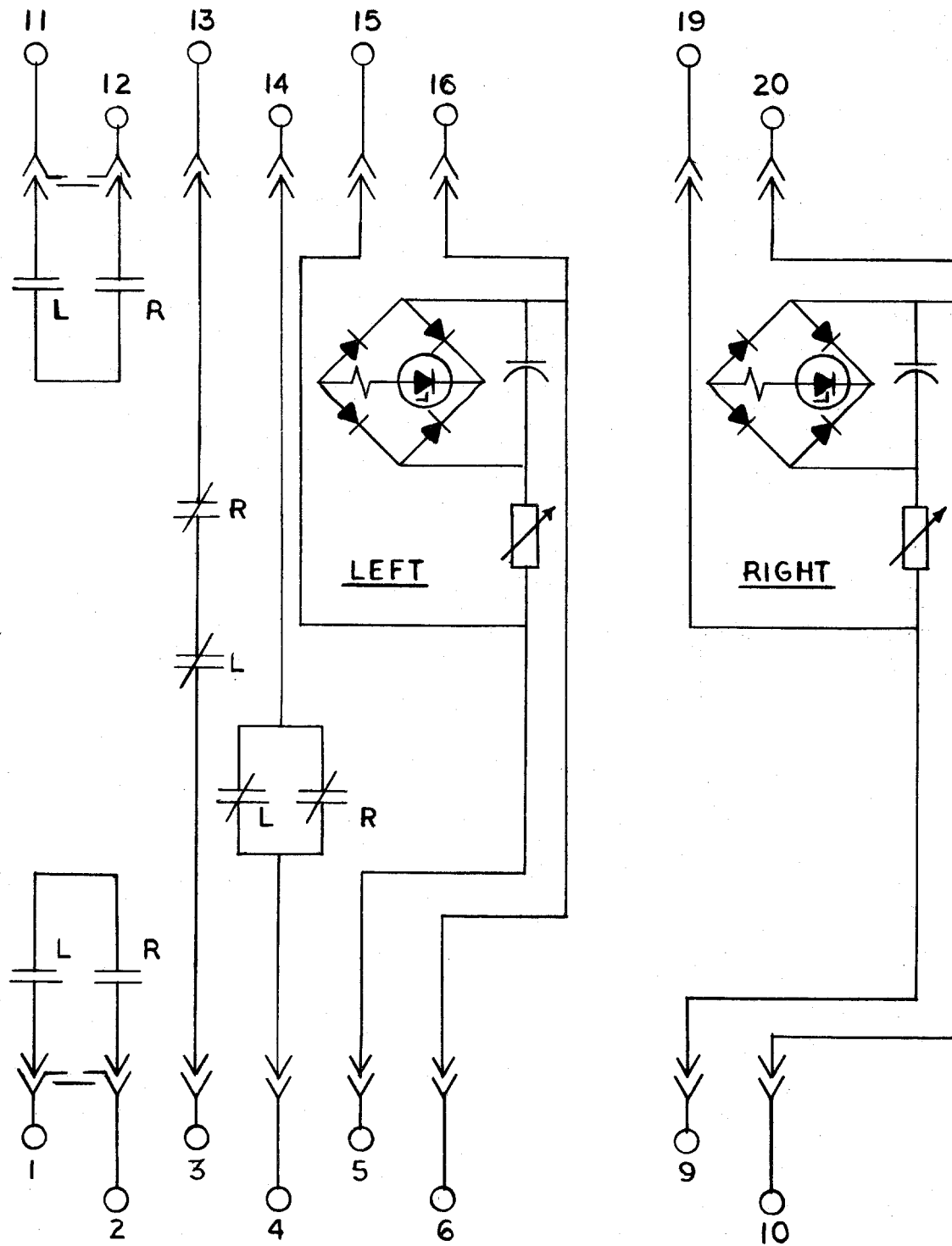


Fig. 1 (0285A5782-0) Internal Connections Diagram for the 12NGV99AL(-)A Relay

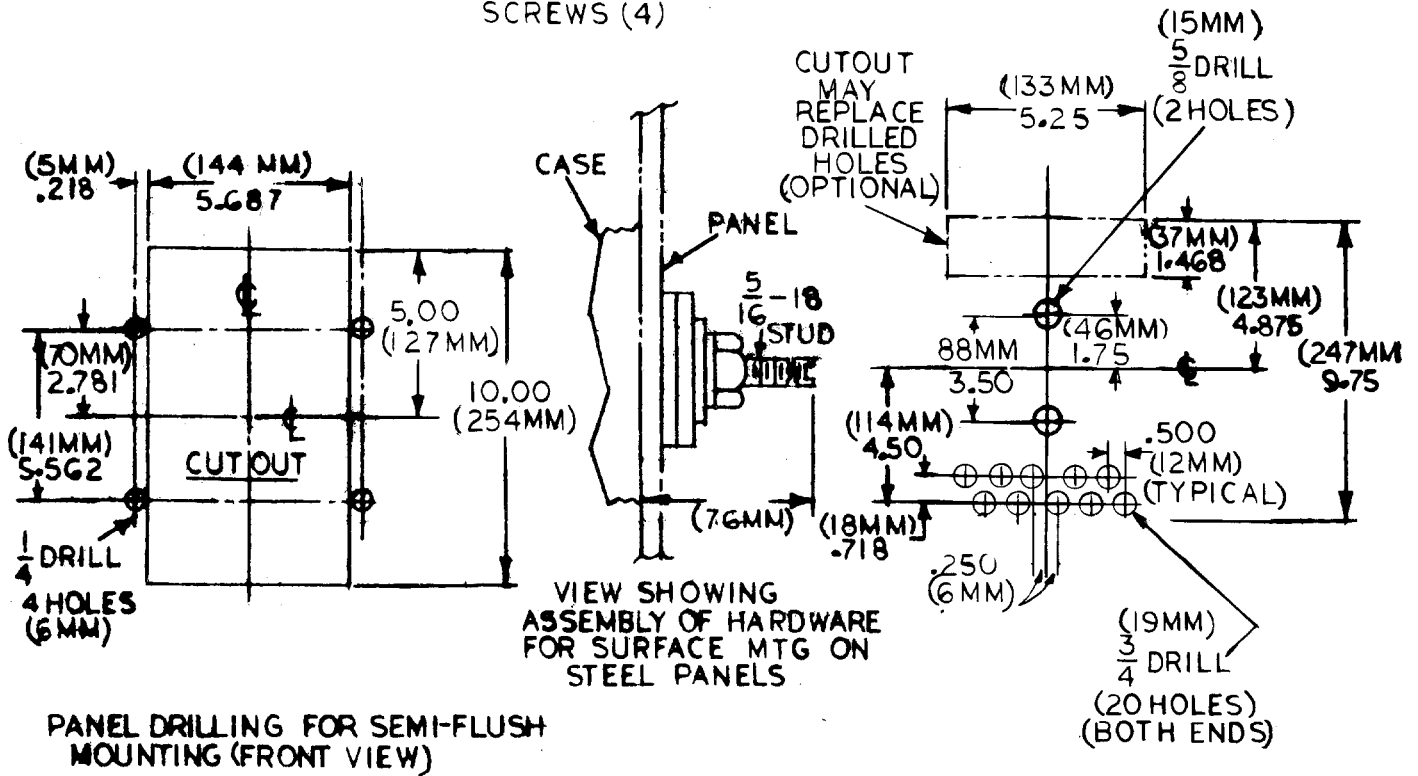
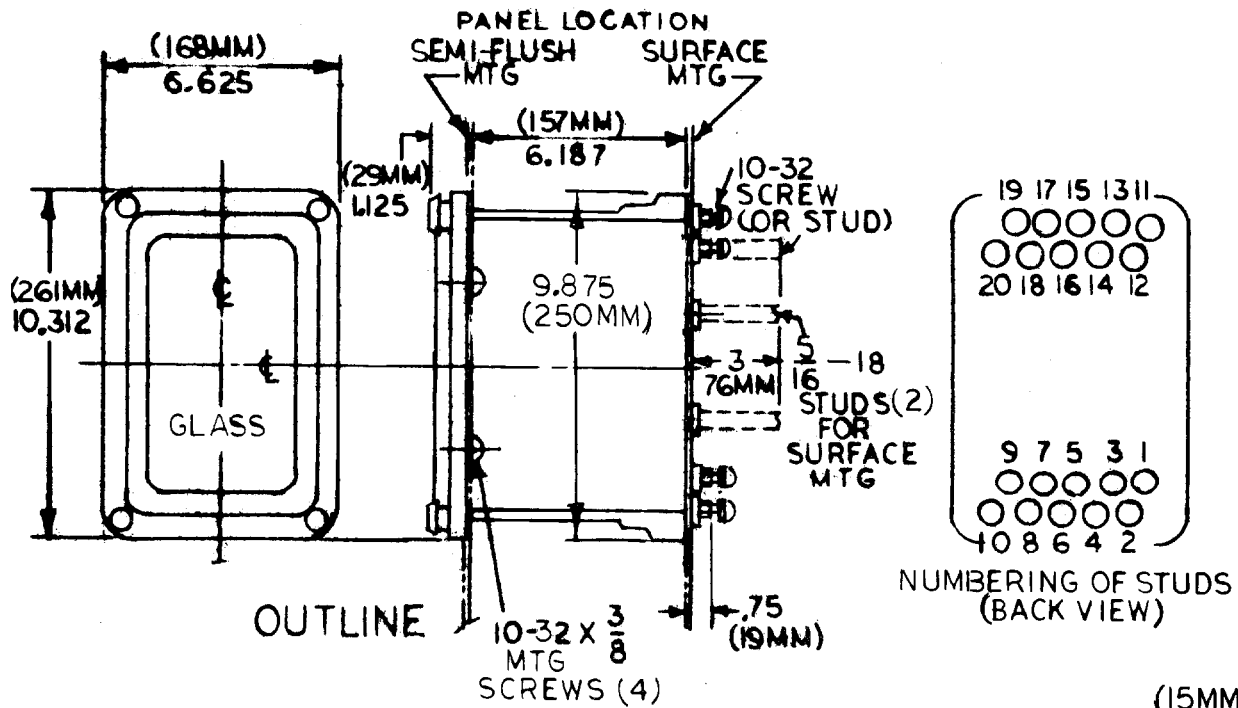


Fig. 2 (6209272-5) Outline and Panel Drilling for the 12NGV99AL(-)A Relay