



INSTRUCTIONS

GEK-6862

Instantaneous Current Relay

Type PJC11BA

INTRODUCTION

These instructions are a supplement to Instruction Book GEH-1790 which is included in this book. The combination of the two forms instructions for the PJC11BA relay.

DESCRIPTION

The PJC11BA relay is similar to the PJC11A relay except the relay is front mounted and front connected. The outline and drilling is in accordance with Fig. 1 of this supplement. All instructions for the PJC11A relay in GEH-1790 apply to the PJC11BA relay.

These instructions do not purport to cover all details or variations in equipment nor to provide for every possible contingency to be met in connection with installation, operation or maintenance. Should further information be desired or should particular problems arise which are not covered sufficiently for the purchaser's purposes, the matter should be referred to the General Electric Company.

GENERAL  ELECTRIC

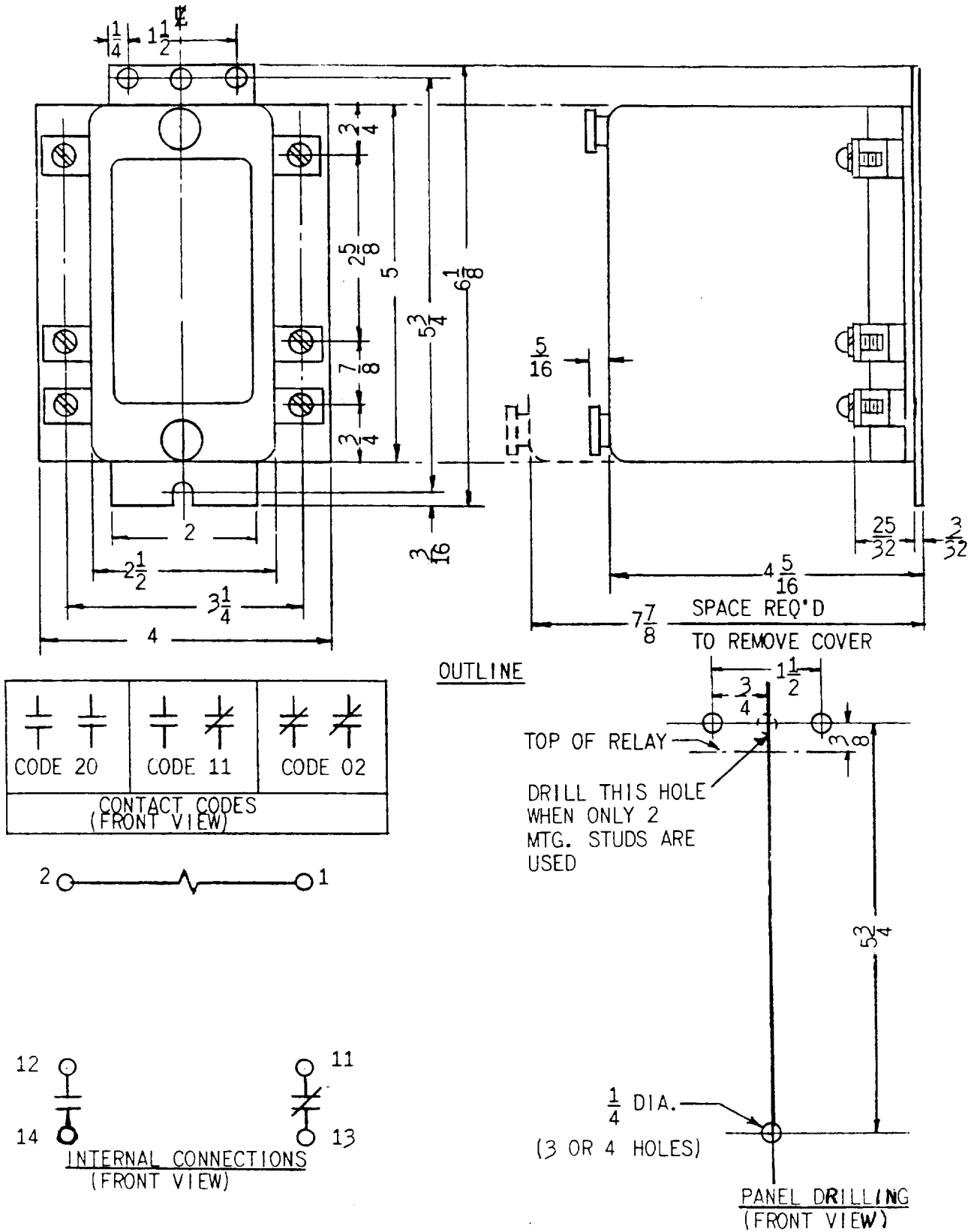


Fig. 1 (0165A7526-1) Outline And Panel Drilling Dimensions For Relay Type PJC11BA.