



INSTRUCTIONS

PLS1B15A1UL2XB029

HYBRID SCHEME WITH DUAL FSK CHANNELS AND PHASE IDENTIFICATION CHANNEL LOGIC

INTRODUCTION

These instructions, GEK-100689 together with GEK-90672, constitute the complete instructions for the above relays.

DESCRIPTION

These relays have the following differences from the standard PLS relay described in GEK-90672.

1. 3 Trip and 3 BFI Contacts per phase

ATTACHMENTS

Figure 1 (0158D7069) Elementary Diagram

Figure 2 (0158D7068) Logic diagram

These instructions do not purport to cover all details or variations in equipment nor provide for every possible contingency to be met in connection with installation, operation or maintenance. Should further information be desired or should particular problems arise which are not covered sufficiently for the purchaser's purposes, the matter should be referred to the General Electric Company. To the extent required the products described herein meet applicable ANSI, IEEE and NEMA standards; but no such assurance is given with respect to local codes and ordinances because they vary greatly.

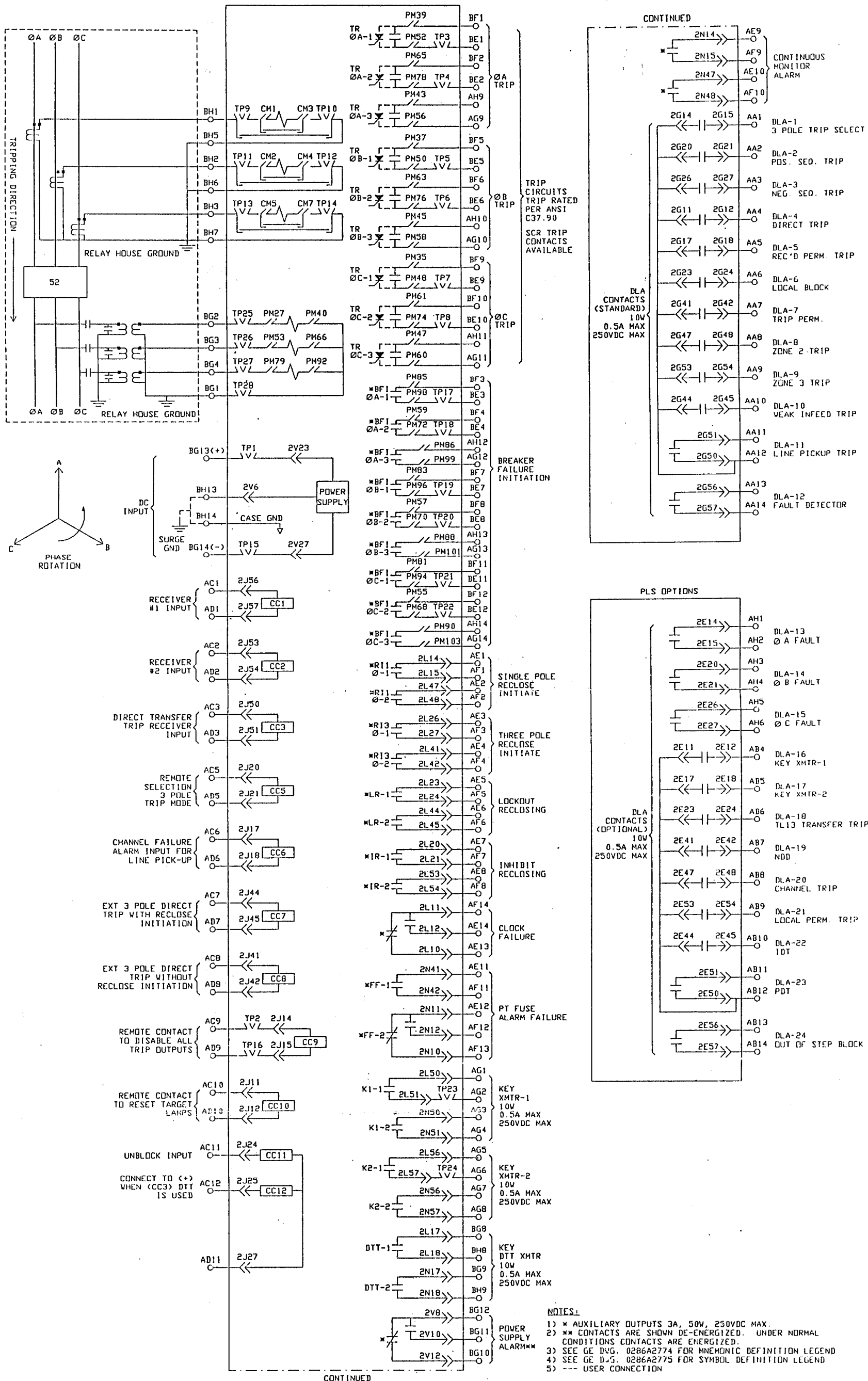
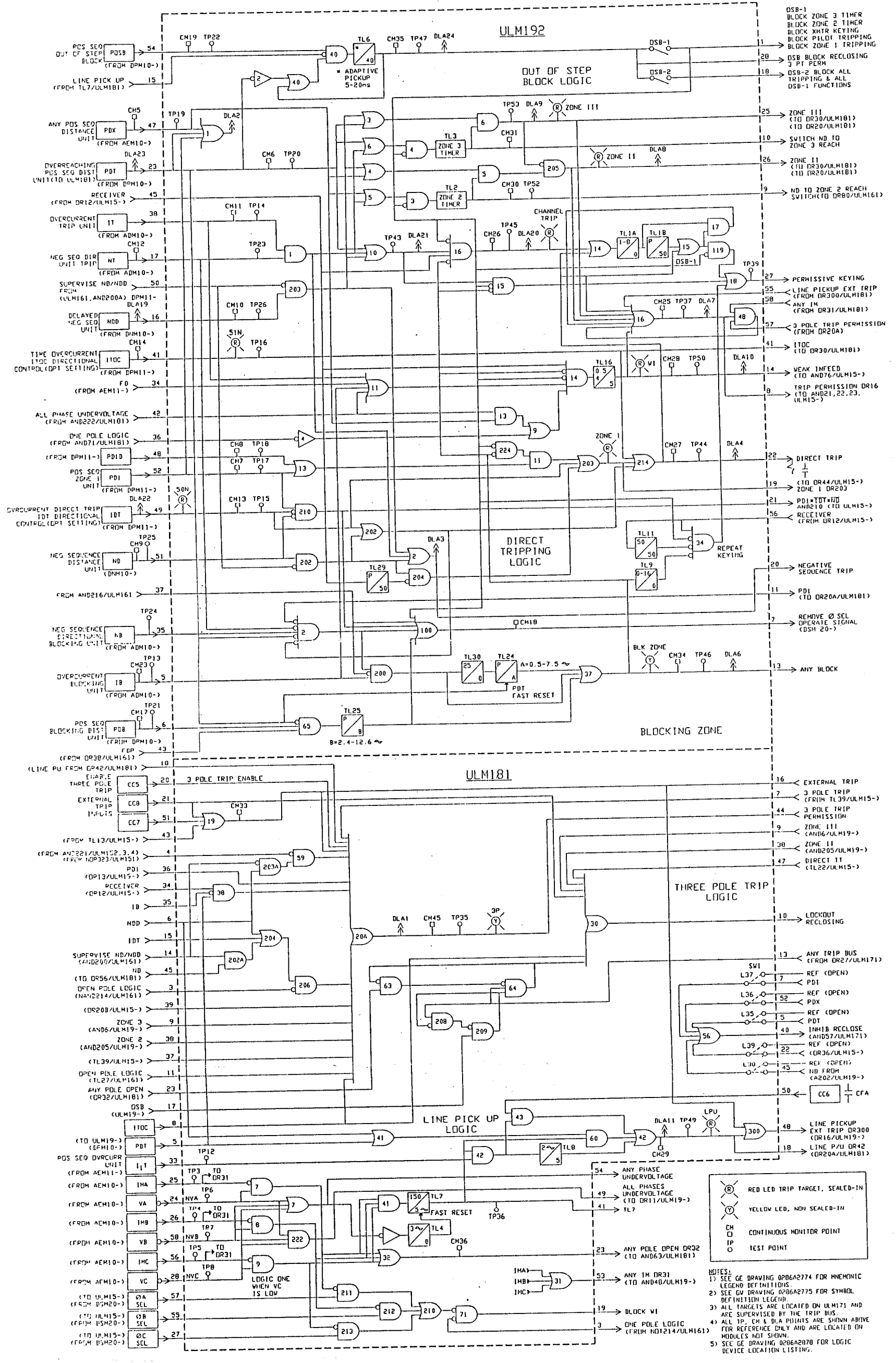


Figure 1 (0158D7069) Elementary Diagram

Figure 2 (0158D7068 Sh.1) Logic Diagram



GEK-100689

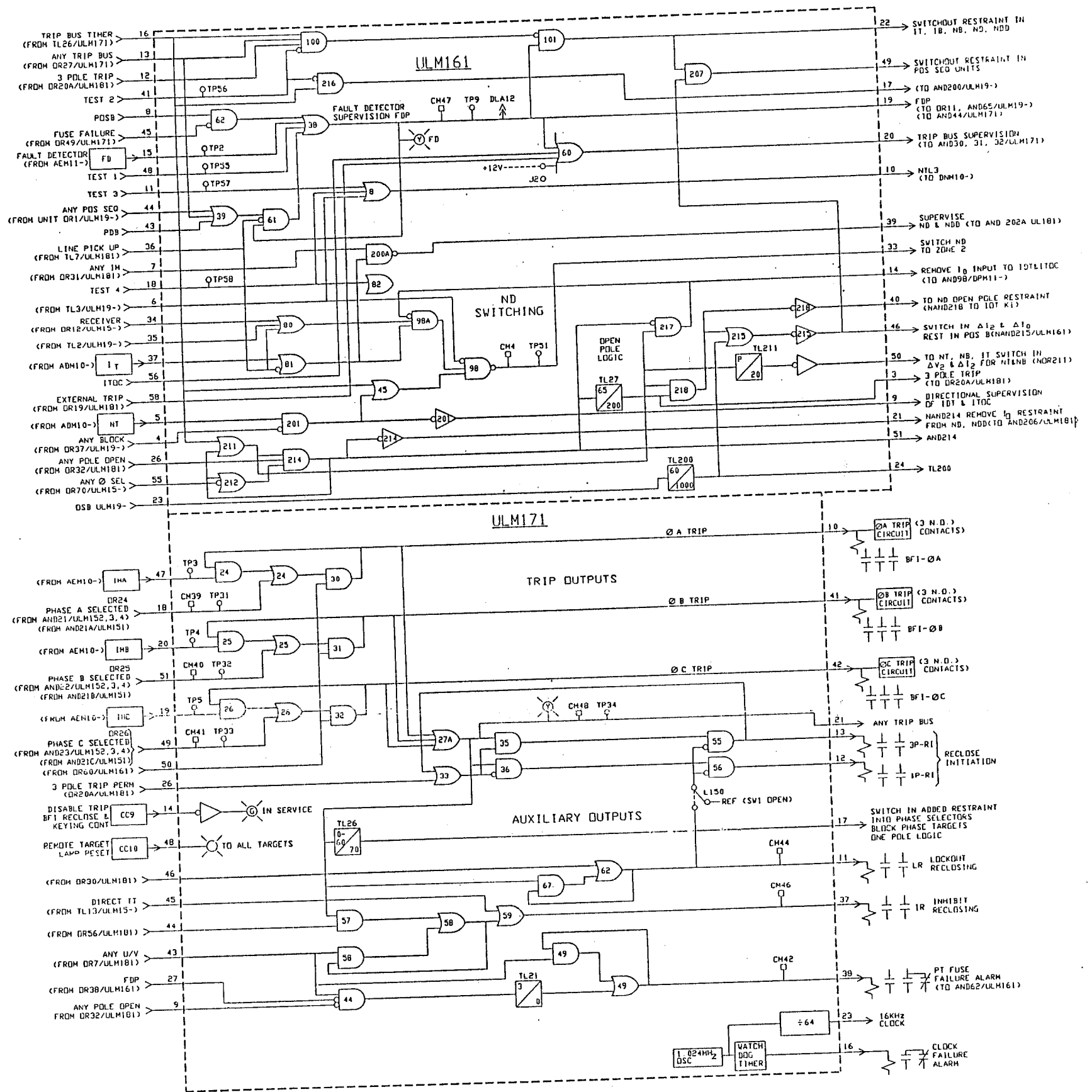


Figure 2 (0158D7068 Sh.2) Logic Diagram

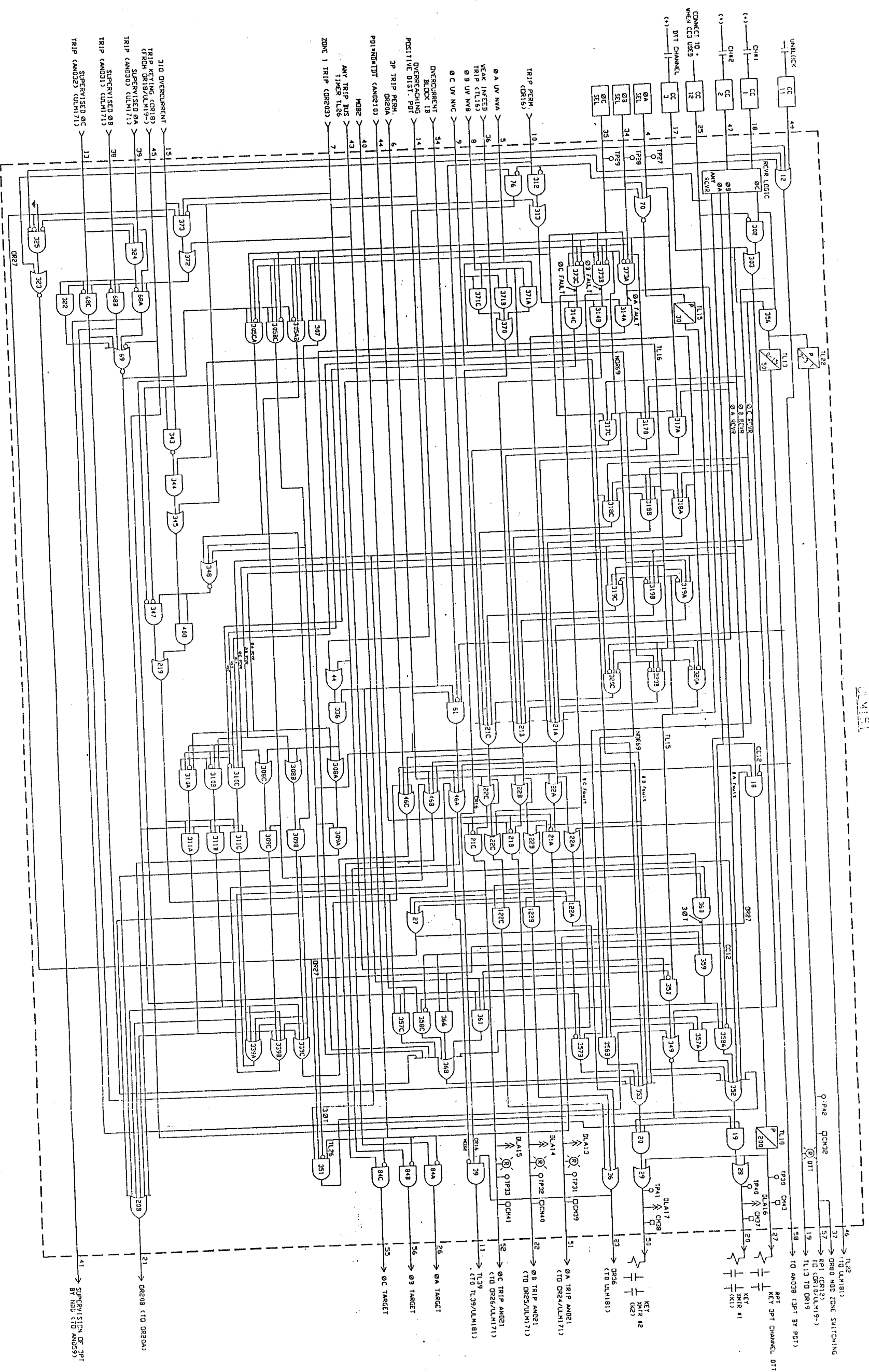


Figure 2 (0158D7068 Sh.3) Logic Diagram
General Electric Protection and Control, Malvern, PA 19355-1337