



# INSTRUCTIONS

**PLS1B56C0CL1XB004  
AND  
PLS1B56C1CL1XB005**

## **HYBRID SCHEME WITH SINGLE FSK CHANNEL FOR SERIES COMPENSATED LINES**

### **INTRODUCTION**

These instructions, GEK-99345 together with GEK-90671, constitute the complete instructions for the PLS1B56C0CL1XB004 and PLS1B56C1CL1XB005.

### **DESCRIPTION**

These relays have the following differences from the standard PLS relay described in GEK-90671.

Modified DLA Contact output busing as illustrated on the elementary diagram.

### **ATTACHMENTS**

Figure 1 (0153D7733) Elementary Diagram

*These instructions do not purport to cover all details or variations in equipment nor provide for every possible contingency to be met in connection with installation, operation or maintenance. Should further information be desired or should particular problems arise which are not covered sufficiently for the purchaser's purposes, the matter should be referred to the General Electric Company. To the extent required the products described herein meet applicable ANSI, IEEE and NEMA standards; but no such assurance is given with respect to local codes and ordinances because they vary greatly.*

---

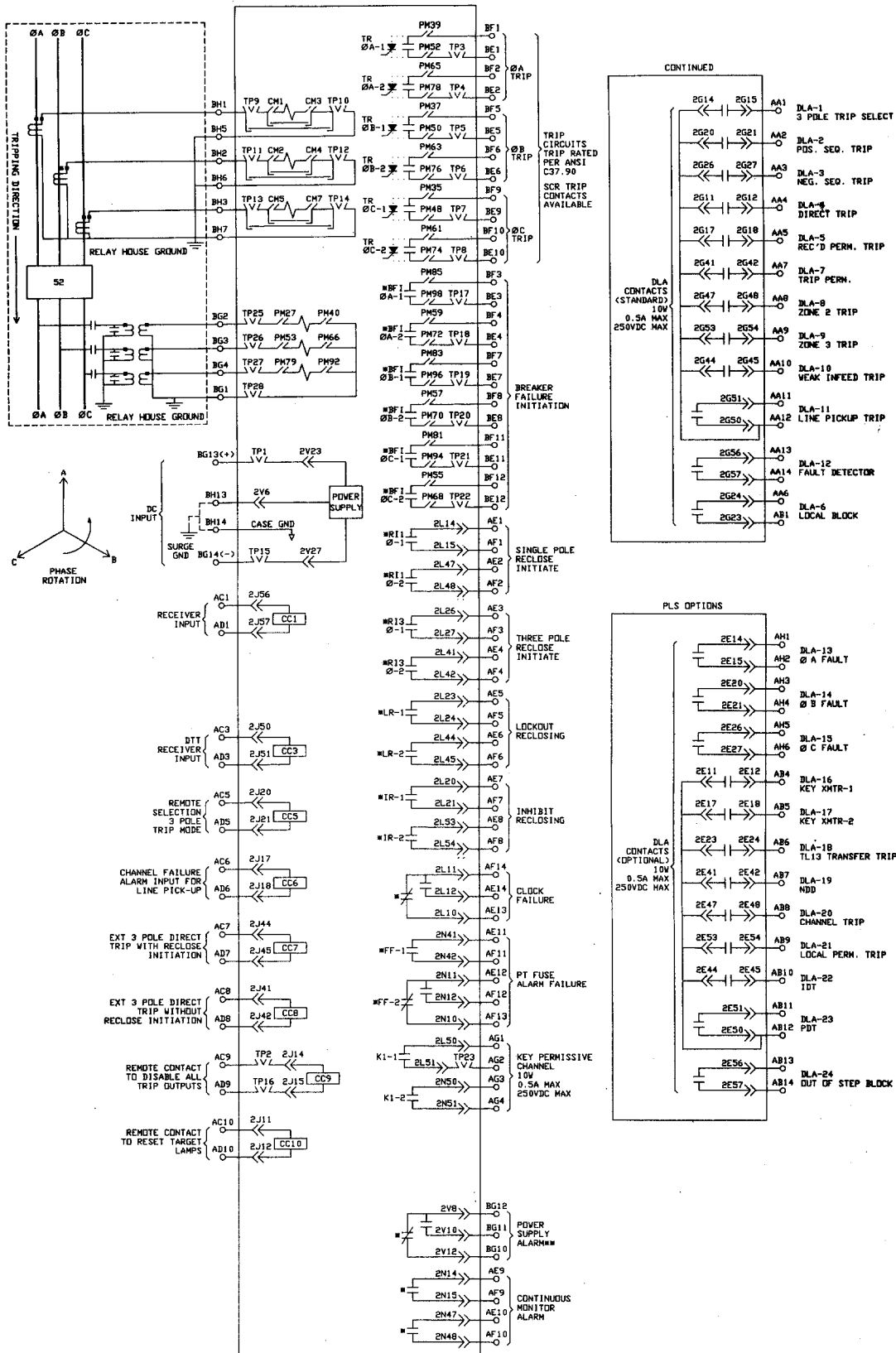


Figure 1 (0153D7733) Elementary Diagram