



INSTRUCTIONS

GEK-41956

STATIC OUTPUT AND TRIPPING UNIT

TYPE SLAT53A

POWER SYSTEMS MANAGEMENT DEPARTMENT

GENERAL  ELECTRIC

PHILADELPHIA, PA.

CONTENTS

	<u>PAGE</u>
DESCRIPTION.....	3
APPLICATION.....	3
RATINGS.....	3
BURDENS.....	4
FUNCTIONS.....	4
A. SCR TRIP CIRCUIT.....	4
B. RI-1Ø-SINGLE POLE RECLOSE INITIATE CIRCUIT.....	4
C. RI-3Ø-THREE POLE RECLOSE INITIATE CIRCUIT.....	4
D. BFI-BREAKER FAILURE INITIATE CIRCUITS.....	4
E. CONTACT CONVERTERS.....	4
CC4.....	4
CC5.....	4
TARGETS.....	5
LOGIC CIRCUITS.....	5
CALCULATION OF SETTINGS.....	5
TL12 (25-200/25-200).....	5
TL3 (.2 - 4 SEC/Ø).....	5
CONSTRUCTION.....	5
RECEIVING, HANDLING AND STORAGE.....	6
TEST INSTRUCTIONS.....	6
CAUTION.....	6
A. GENERAL.....	6
B. OPERATIONAL CHECKS.....	6
C. TEST CARD ADAPTER.....	6
D. TIMER ADJUSTMENTS AND TESTS.....	7
TABLE I.....	7
E. TRIP CIRCUIT TESTS.....	7
F. OVERALL EQUIPMENT TESTS.....	7
MAINTENANCE.....	7
A. PERIODIC TESTS.....	7
B. TROUBLE SHOOTING.....	7
C. SPARE PARTS.....	8

DESCRIPTION

The Type SLAT53A relay is a static output and tripping unit. The Type SLAT53A is not intended to be used by itself, but rather as a part of a complement of equipment that forms a protective relaying scheme. For a complete description of the overall scheme in which this relay is employed, refer to the overall logic diagram and its associated logic description that is supplied with each terminal of equipment.

The Type SLAT53A relay is packaged in a four rack unit (1 R.U. = 1 3/4") enclosed metal case suitable for mounting on a 19 inch rack. The outline and mounting dimensions are shown in Figure 1. The internal connections for the SLAT53A relay are shown in Figure 2. The component and card locations are shown in Figure 3.

APPLICATION

The Type SLAT53A relay was originally designed to operate in conjunction with Type SLYP, Type SLCN, Type SLA and Type SSA relays in a single pole tripping scheme. The following is a listing of the various output functions together with a general description of their intended use.

SCR

Six silicon controlled rectifier trip circuits, two per phase, are provided to permit tripping of the associated circuit breaker.

RI-1Ø

These reclose initiation outputs are provided to initiate automatic reclosing after a single pole trip.

RI-3Ø

These reclose initiation outputs are provided to initiate automatic reclosing after a three pole trip.

BFI

Breaker failure initiation outputs, two per phase, are provided for breaker failure protection.

RX

Received channel outputs are provided.

If any of these functions are not required, the outputs may be used for whatever purposes their characteristics are suited.

RATINGS

The Type SLAT53A relay is designed for use in an environment where the air temperature outside the relay case is between -20°C and +65°C.

The Type SLAT53A relay requires a ± 15 VDC power source which can be obtained from a Type SSA power supply.

The SCR tripping circuits are rated for 48/125 or 250 VDC. Each has a 1.0 ampere series target. The tripping circuits are designed to carry 30 amperes for one second.

The contacts of the telephone type relays that are used for RI-1Ø and RI-3Ø will make and carry 3 amperes continuously. They will make and carry 30 amperes for tripping duty. The contacts will interrupt 180 VA resistive (60 VA inductive).

These instructions do not purport to cover all details or variations in equipment nor to provide for every possible contingency to be met in connection with installation, operation or maintenance. Should further information be desired or should particular problems arise which are not covered sufficiently for the purchaser's purposes, the matter should be referred to the General Electric Company.

The contacts of the reed relays used for BFI-A, BFI-B, BFI-C, RX1 and RX2 will make and carry 3 amperes continuously or short time. The contacts will interrupt 100VA resistive (35 VA inductive).

Refer to the unit nameplate for the ratings of a particular relay.

BURDENS

The SLAT53A relay presents a maximum burden to the Type SSA power supply of:

- 120 ma from the +15 VDC supply
- 20 ma from the -15 VDC supply

In addition, each target lamp draws 80 ma from the -15 VDC supply.

Each contact converter, when energized, will draw approximately 10 ma from the station battery, regardless of tap setting.

FUNCTIONS

A. SCR TRIP CIRCUIT

Electrically separate, isolated SCR trip circuits are provided to trip two breakers. Each circuit is capable of carrying 30 amperes for one second.

The internal connections for the SCR trip and isolator subassemblies are shown in Figure 4. The isolator card, by means of a DC to DC converter, provides a signal path but maintains metallic isolation. This feature makes it possible to isolate the relay power supply from the trip circuit power supply.

B. RI-1Ø - SINGLE POLE RECLOSE INITIATE CIRCUIT

Two electrically separate normally open contacts are provided. These contacts close within 17 ms from the time the associated coil is energized by the logic. The contacts open within 170 MS from the time the coil is deenergized. The RI-1Ø function uses a telephone type relay with contact ratings stated under RATINGS.

C. RI-3Ø - THREE POLE RECLOSE INITIATE CIRCUIT

Two electrically separate normally open contacts are provided. These contacts close within 17 ms. from the time the associated coil is energized by the logic. The contacts open within 170 ms from the time the coil is deenergized. The RI-3Ø function uses a telephone type relay with contact ratings stated under RATINGS.

D. BFI - BREAKER FAILURE INITIATE CIRCUITS

Two electrically separate normally open contacts are provided for each phase. These contacts close within 2 MS of the time that the associated coil is energized by the logic. The contacts open within 2 MS from the time the coil is deenergized. The BFI functions use reed relays with contact ratings stated under RATINGS.

E. CONTACT CONVERTERS

The purpose of this function is to convert a contact operation into a signal that is compatible with the logic circuit of the Type SLAT53A relay. These contact converters are labeled CC4 and CC5.

A link is provided on each card to select operation from a 48, 125, or 250 VDC station battery.

CC4

Contact converter 4 is energized by a pole disagreement circuit.

CC5

Contact converter 5 is energized by an external contact and causes the relay to trip 3 pole for any fault.

TARGETS

Two electromechanical target coils are included, one in series with each SRC. These targets operate on one ampere of trip current when the associated SCR passes current. The trip circuit resistance in the relay is 0.40 ohm.

Six target lamps are included in the SLAT53A. These are designated as indicated on the internal connection diagram of Figure 2.

LOGIC CIRCUITS

The functions of the Type SLAT53A relay involve basic logic (AND, OR, AND NOT) where the presence or absence of signals, rather than their magnitude, controls the operation. Signals are measured with respect to a reference bus accessible at TP1. In general a signal below 1 VDC represents an OFF or LOGIC ZERO condition, an ON or LOGIC ONE state is represented by a signal of approximately +15 VDC.

The symbols used on the internal connection diagram (Fig. 2) are explained by the legend shown in Figure 5.

CALCULATION OF SETTINGS

This section covers those timers in the SLAT53A which require field adjustment.

TL12 (25-200/25-200)

This timer is associated with the pole disagreement circuit. The TL12 timer is intended to provide a means of coordinating the 52/a - 52/b contact opening and closing with the breaker main pole position. The pickup delay must be sufficient to cover the time between the closure of the 52/b contact and the opening of the main breaker contacts (or arcing contacts, if present) plus the reset time of the trip functions plus a 5 ms margin. The reset delay of the TL12 timer must be sufficient to cover the time spread between the 52/b opening and main breaker pole reclosing plus margin.

TL3 (.2 - 4 SEC/0)

To prevent prolonged operation with one pole open, CC4 energizes the TL13 timer. The output from TL13 provides a three pole trip initiation to open all of the other breaker poles. The pickup delay setting must exceed the maximum time needed to fault clearing and reclosing.

CONSTRUCTION

The SLAT53A relay is packaged in an enclosed metal case with hinged front cover and removable top cover. The outline and mounting dimensions of the case and the physical location of the components are shown in Figures 1 and 3 respectively.

The SLAT53B relay contains printed circuit cards identified by a code number such as: A104, T114, L102 where A designated an auxiliary function, T designated a time delay function, and L designated a logical function. The printed circuit cards plug in from the front of the unit. The sockets are marked with letter designations or "addresses" (D, E, F, etc.) which appear on the guide strips in front of each socket, on the component location drawing, on the unit internal connection diagram, and on the printed circuit card. The test points (TP1, TP2, etc.) shown on the internal connection diagram are connected to instrument jacks on a test card in position T or AT with TP1 at the top of the AT card. TP1 and TP11 are tied to reference; TP10 and TP20 are tied to +15 VDC through a 1.5K resistor. This resistor limits the current when TP10 or TP20 is used to supply a logic signal to a card.

The SLAT53A relay receives its inputs from the associated Type SLA relay. These units are interconnected by ten conductor shielded cables. The sockets for these cables are located on the rear panel of the unit. The SLAT53A output functions are connected to 12 point terminal strips, which are also located on the rear of the unit.

A window is provided in the hinged cover of the relay to allow target lamps and the mechanical targets to be seen. Push buttons are also provided to reset the targets and lamps without opening the cover.

RECEIVING, HANDLING AND STORAGE

These relays will normally be supplied as a part of a static relay equipment, mounted in a rack or cabinet with other static relays and test equipment. Immediately upon receipt of a static relay equipment, it should be unpackaged and examined for any damage sustained in transit. If injury or damage resulting from rough handling is evident, file a damage claim at once with the transportation company and promptly notify the nearest General Electric Sales Office.

Reasonable care should be exercised in unpacking the equipment. If the equipment is not to be installed immediately, it should be stored indoors in a location that is free from moisture, dust, metallic chips, and severe atmospheric contaminants.

Just prior to final installation the shipping support bolt should be removed from each side of all relay units, to facilitate possible future unit removal for maintenance. These shipping support bolts are approximately 8 inches back from the relay front panel. Static relay equipment, when supplied in swing rack cabinets, should be securely anchored to the floor or to the shipping pallet to prevent the equipment from tipping over when the swing rack is opened.

TEST INSTRUCTIONS

If the SLAT53A relay that is to be tested is installed in an equipment which has already been connected to the power system, disconnect the outputs to the system.

CAUTION

THE LOGIC SYSTEM SIDE OF THE DC POWER SUPPLY USED WITH MOD III STATIC RELAY EQUIPMENT IS ISOLATED FROM GROUND. IT IS A DESIGN CHARACTERISTIC OF MOST ELECTRONIC INSTRUMENTS THAT ONE OF THE SIGNAL INPUT TERMINALS IS CONNECTED TO INSTRUMENT CHASSIS. IF THE INSTRUMENT USED TO TEST THE RELAY EQUIPMENT IS ISOLATED FROM GROUND, ITS CHASSIS MAY HAVE AN ELECTRICAL POTENTIAL WITH RESPECT TO GROUND. THE USE OF A TEST INSTRUMENT WITH A GROUNDED CHASSIS WILL NOT AFFECT THE TESTING OF THE EQUIPMENT. A SECOND GROUND CONNECTION TO THE EQUIPMENT, SUCH AS A TEST LEAD INADVERTENTLY DROPPING AGAINST THE RELAY CASE, MAY CAUSE DAMAGE TO THE LOGIC CIRCUITRY. NO EXTERNAL TEST EQUIPMENT SHOULD BE LEFT CONNECTED TO THE STATIC RELAYS WHEN THEY ARE IN PROTECTIVE SERVICE, SINCE TEST EQUIPMENT GROUNDING REDUCES THE EFFECTIVENESS OF THE ISOLATION PROVIDED.

A. GENERAL

The SLAT53A relay is supplied from the factory either mounted in a static relay equipment as a separate unit associated with measuring relays, a Type SSA power supply, and some form of channel equipment. All relay units for a given terminal of static relaying equipment are tested together at the factory, and each unit will have the same summary number stamped on its nameplate.

Timers should be set for the operating on reset times indicated on the associated overall logic diagram. Where a time range is indicated on the overall logic diagram, the timer should be set for the value recommended for that function in the descriptive writeup accompanying the overall logic diagram. Where a setting depends upon conditions encountered on a specific application, this is so stated and the factors influencing the choice of setting are described. The procedure for checking and setting the timers is described in a later section.

B. OPERATIONAL CHECKS

Operation of the SLAT53A unit can be checked by observing the signals at the twenty test points (TP1 to TP20) in the SLAT53A by observing the operation of the associated channel equipment, or by observing the output functions. The test points are located on two test cards in positions T and AT, and are numbered 1 to 20 from top to bottom. TP1 is the reference bus for the logic circuit, TP10 is at +15 VDC. The remaining points are located at various strategic points throughout the logic as shown on the internal connection diagram (Figure 2). Test point voltages can be monitored with a portable high impedance voltmeter, the voltmeter on the test panel of the associated equipment, or an oscilloscope.

C. TEST CARD ADAPTER

The test card adapter provides a convenient means of gaining access to any pin of a particular card. Detailed information on the use of the test card adapter is included in the card instruction book GEK-34158.

D. TIMER ADJUSTMENTS AND TESTS

When the time delay cards are to be adjusted or checked, an oscilloscope that can display two traces simultaneously and that has a calibrated horizontal sweep should be used.

In order to test the timer cards it is necessary to remove the card which supplied the input to the timer (see Table I) and to place the timer card in a card adapter. The card adapter allows access to the input and output of the timer if they are not brought out on test points. The timer test circuit is shown in Figure 6. Opening the N.C. contact causes the output to step up to +15 VDC after the pickup delay of the timer. To increase the pickup time, turn the upper potentiometer to the timer card clockwise; to decrease the time turn it counter-clockwise. Closing the contact causes the timer output to dropout after the reset time delay setting of the card. If the timer card is provided with a variable reset delay, it can be adjusted by the lower potentiometer on the timer card (CW increases reset time).

TABLE I

TIME UNDER TEST	POSITION	REMOVE CARD IN POSITION
TL11	K	PG
TL12	AG	AE
TL13	G	AG

E. TRIP CIRCUIT TESTS

The SCR trip circuits and series mechanical targets may be checked by connecting an auxiliary lockout relay, such as the Type HEA relay, in series with the SCR circuit. A typical circuit is shown in Figure 7. The HEA relay should have the same D.C. rating as the SCR trip circuit of the SLAT53A. If an auxiliary lockout relay is not available, it can be replaced by a resistive load which limits the trip circuit current to 3 amperes.

Prior to final installation, a check of the overall trip circuit should be made with the SCR outputs connected to trip the circuit breakers.

F. OVERALL EQUIPMENT TESTS

After the SLAT53A relay and the associated static relay units have been individually calibrated and tested for the desired settings, a series of overall operating circuit checks is advisable.

The elementary overall logic, and logic description for the specific job will be useful for determining the overall operation of the scheme.

Overall equipment test can be performed by applying AC current and voltages to the measuring units as specified in the instruction book for the measuring units and checking that proper outputs are obtained when the measuring units operate.

MAINTENANCE

A. PERIODIC TESTS

It should be sufficient to check the outputs produced at test points in the SLAT53A where periodic calibration tests are made on the associated measuring units, for example, the phase and ground relays in line relaying scheme. No separate periodic tests on the SLAT53A itself should be required.

B. TROUBLE SHOOTING

In any trouble shooting of equipment, it should first be established which unit is functioning incorrectly. The overall logic diagram supplied with the equipment shows the combined logic of the complete equipment and the various test points in each unit. By signal tracing, using the overall logic diagram and the various test points, it should be possible to quickly isolate the trouble.

A test adapter card is supplied with each static relay equipment to supplement the prewired test points on the test cards. Use of the adapter card is described in the card instruction book GEK-34158.

A dual-trace oscilloscope is a valuable aid to detailed trouble shooting, since it can be used to determine phase shift, operate and reset times as well as input and output levels. A portable dual-trace oscilloscope With a calibrated sweep and trigger facility is recommended.

C. SPARE PARTS

To minimize possible outage time, it is recommended that a complete maintenance program should include the stocking of at least one spare card of each type. It is possible to replace damaged or defective components on the printed circuit cards, but great care should be taken in soldering so as not to damage or bridge-over the printed circuit busses, or overheat the semi-conductor components. The repaired area should be recovered with a suitable high-dielectric plastic coating to prevent possible breakdowns across the printed buses due to moisture and dust. The wiring diagrams for the cards in the SLAT51C relay are included in the card book GEK-34158.

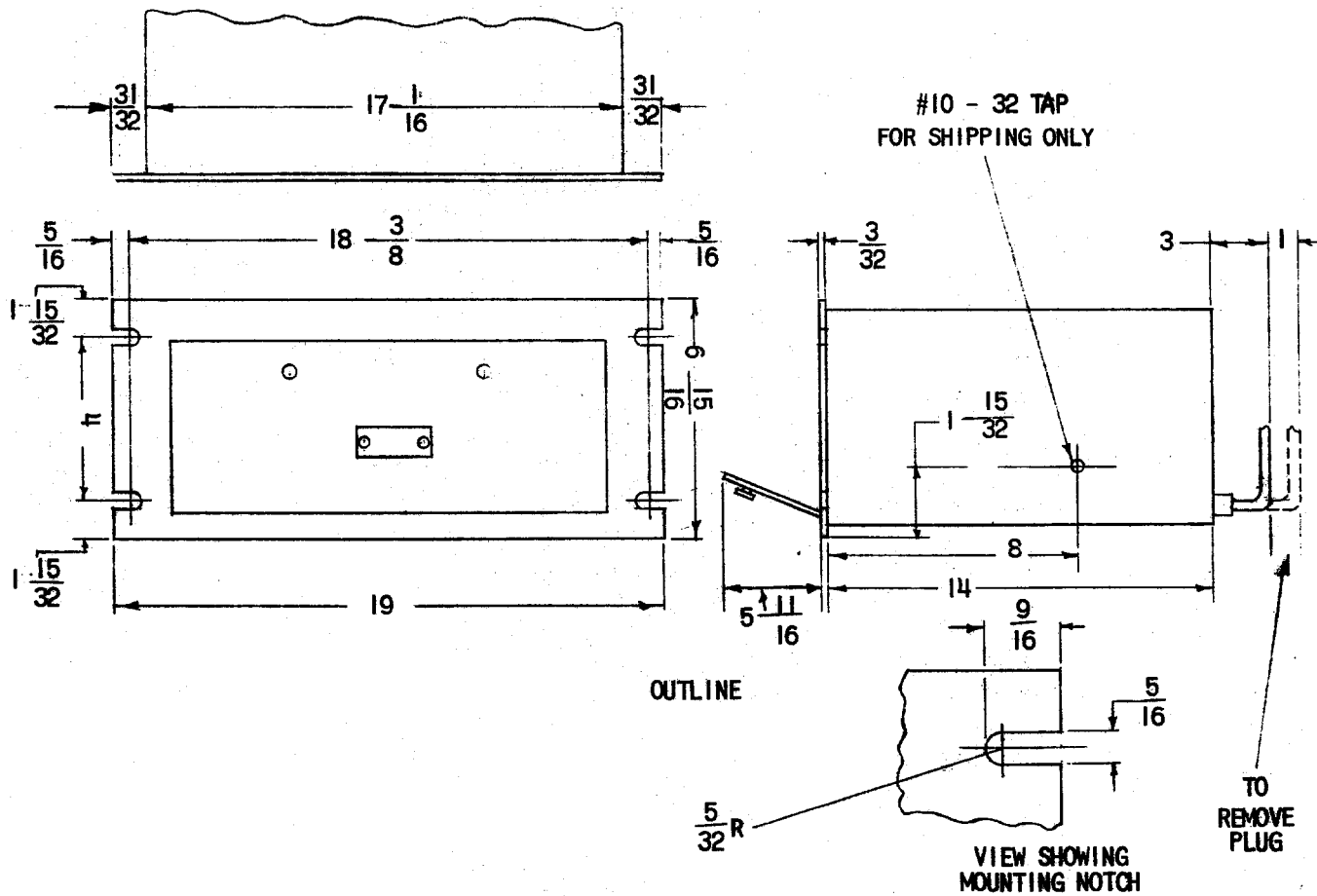


FIG. 1 (0227A2037-0) OUTLINE AND MOUNTING DIMENSIONS FOR THE TYPE SLAT53A

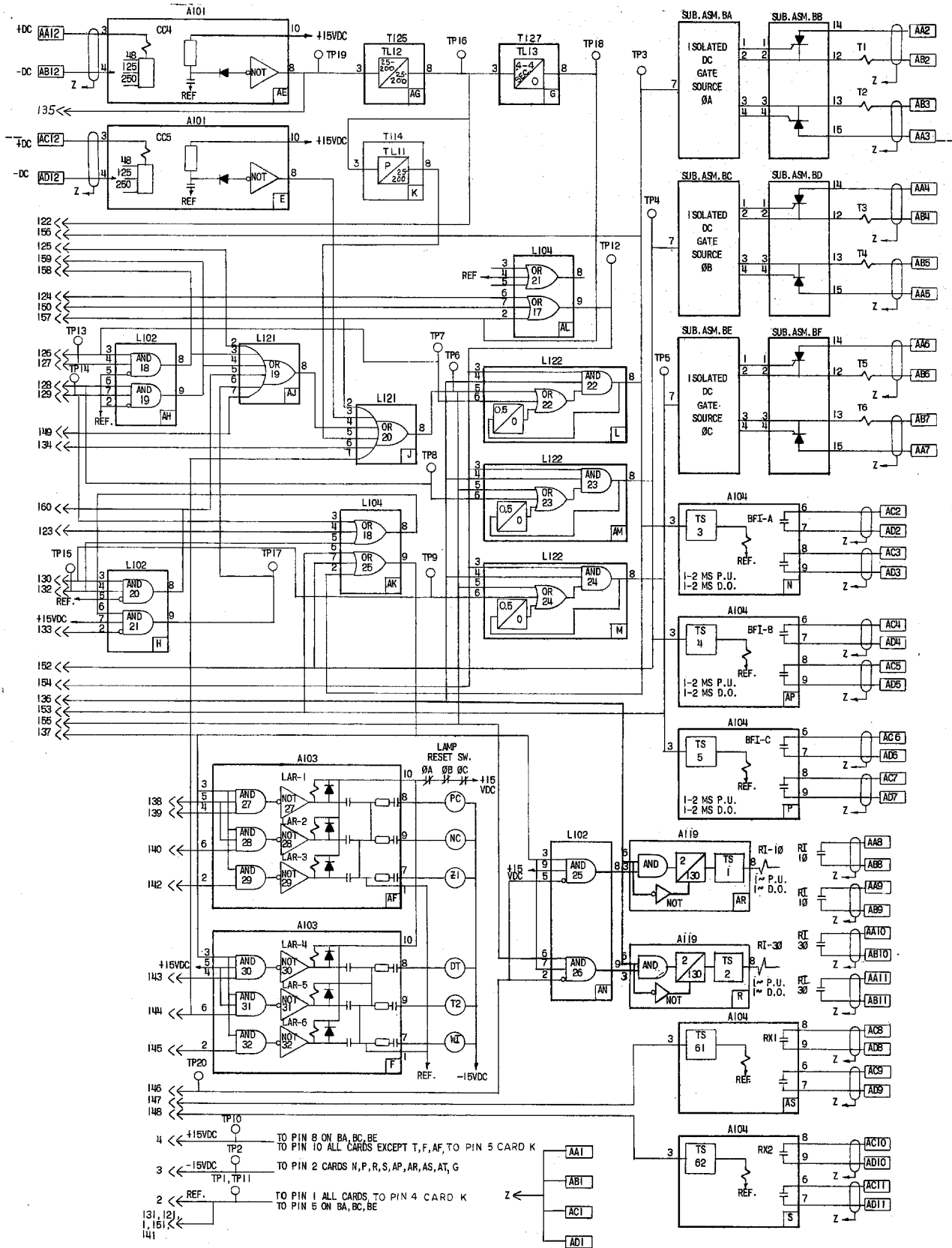


FIG. 2 (0149C7361-2) INTERNAL CONNECTIONS FOR THE TYPE SLAT53A

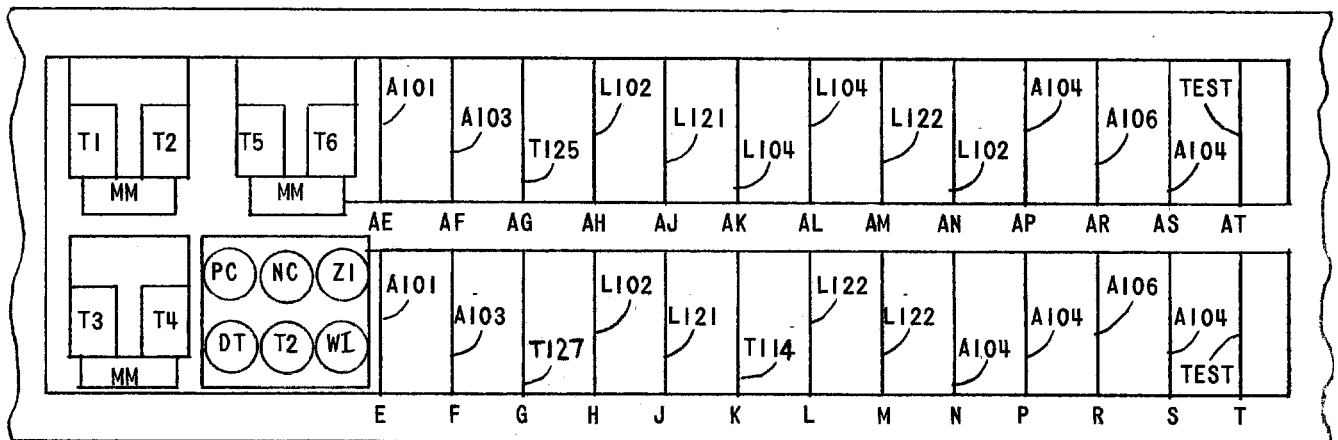
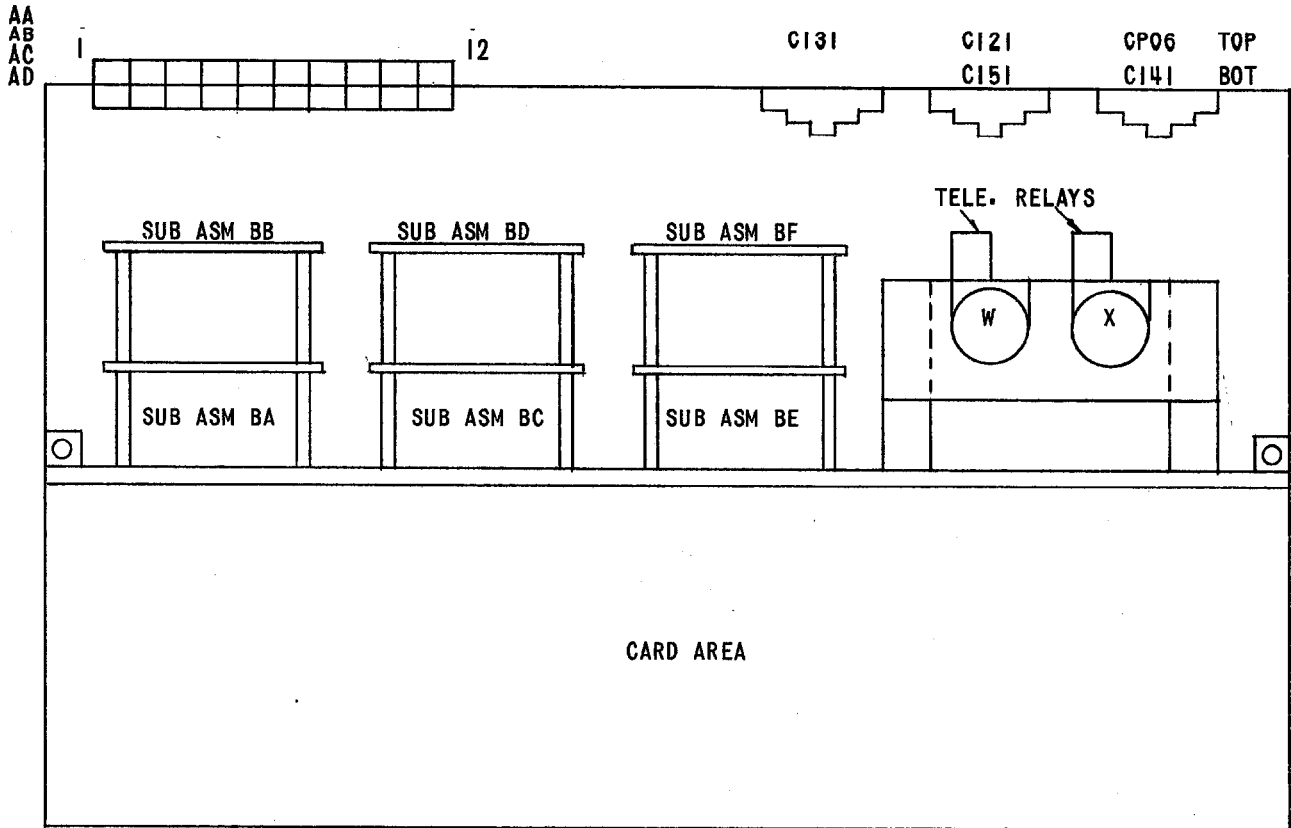
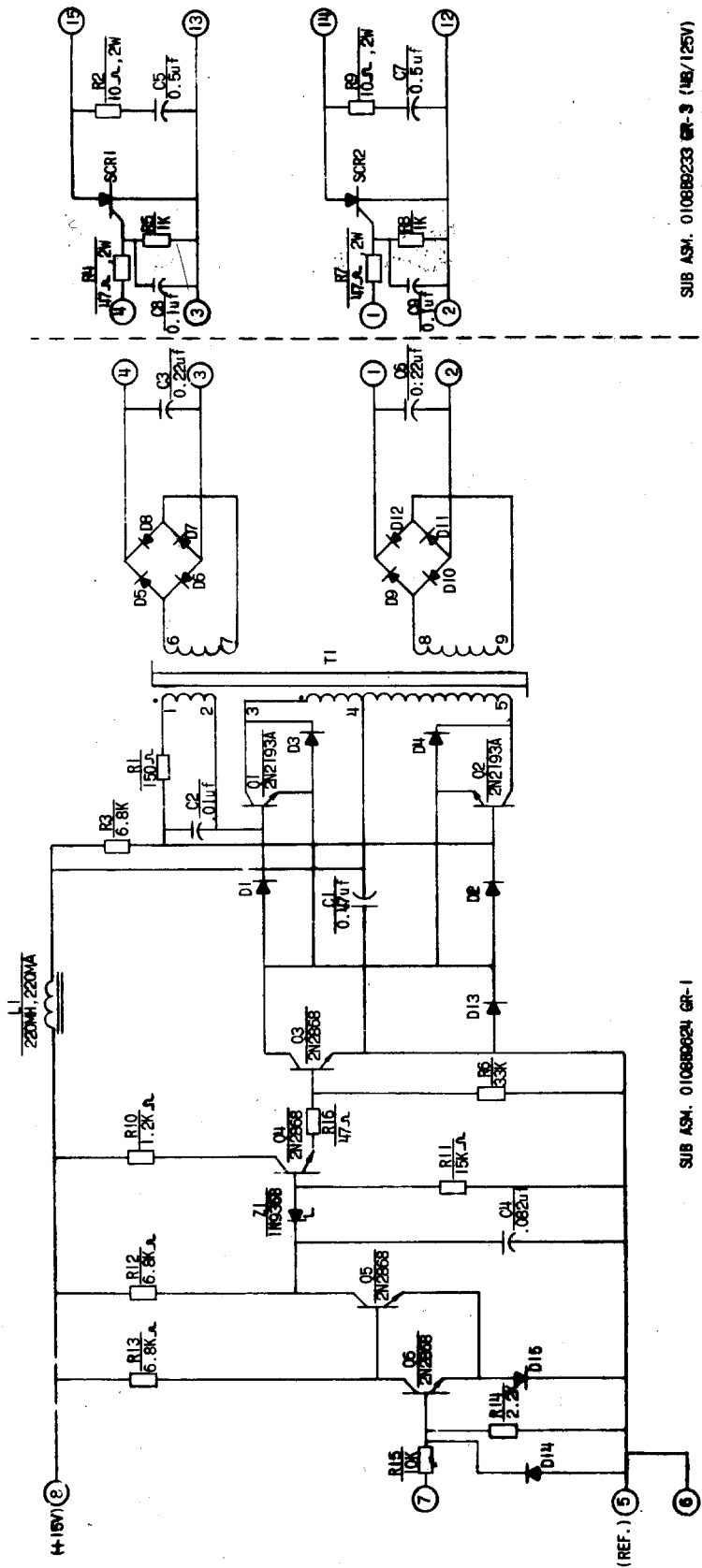


FIG. 3 (0227A2181-0) COMPONENT AND CARD LOCATION DIAGRAM FOR THE TYPE SLAT53A



SUB ASM. 0108B024 GR-1

SUB ASM. 0108B023 GR-3 (18/125V)
0108B023 GR-4 (280V)

ALL DIODES 1N4148 UNLESS NOTED
ALL RES. 1/2 WATT ±5% UNLESS NOTED
② = TERM. POST ON BOARD ASM
1N9358 = 9.1V ±5%

FIG. 4 (0108B9610-0) INTERNAL CONNECTIONS FOR THE SCR TRIP AND ISOLATION SUBASSEMBLIES

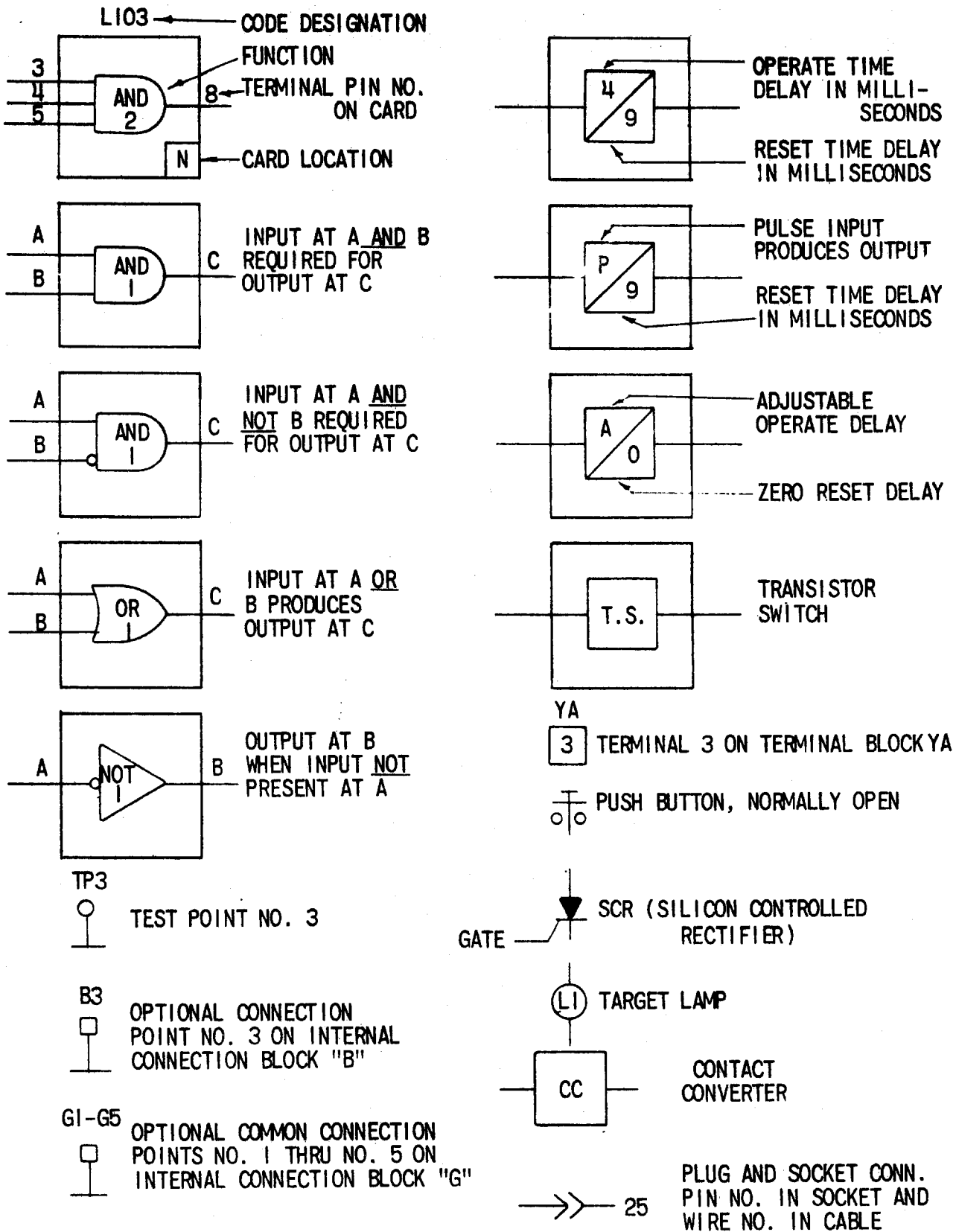
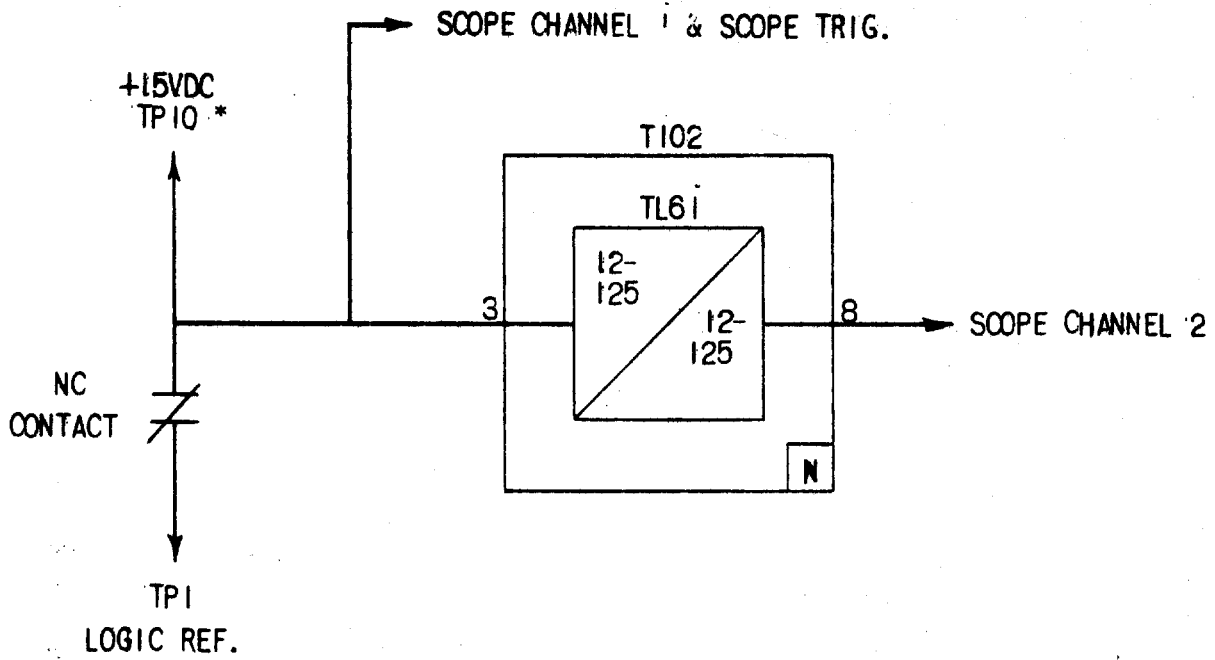


FIG. 5 (0227A2047-0) INTERNAL CONNECTION DIAGRAM LEGEND



* THE 15VDC SIGNAL AT PIN 10 HAS A CURRENT LIMITING RESISTOR MOUNTED ON THE TEST CARD.

FIG. 6 (0246A7987-0) LOGIC TIMER TEST CIRCUIT

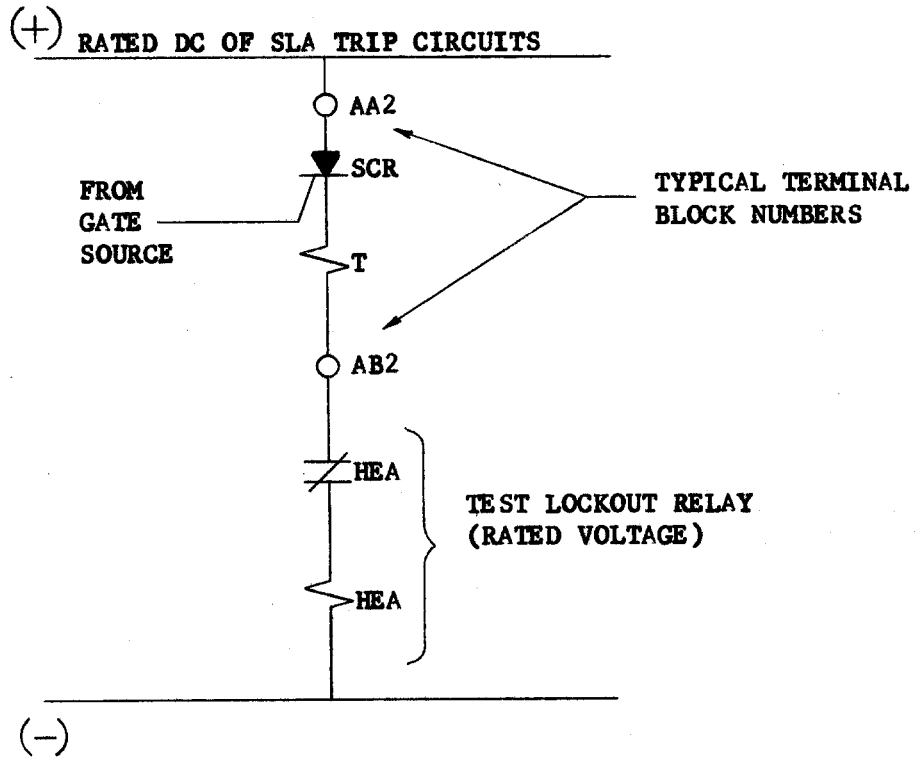


FIG. 7

TYPICAL SCR TEST CIRCUIT FOR TYPE SLA RELAYS

FIG. 7 (0208A2365-0) TYPICAL SCR TRIP CIRCUIT TEST CONNECTIONS

GENERAL ELECTRIC INSTALLATION AND SERVICE ENGINEERING OFFICES

FIELD SERVICE OFFICE CODE KEY

- * Mechanical & Nuclear Service
- † Electrical & Electronic Service
- ‡ Marine Service
- Y Transportation

FOR YOUR LASTING SATISFACTION . . . with the performance and availability of your General Electric equipment, GE provides this nationwide network of field service offices, serving utility, industrial, transportation and marine users. Qualified field engineers provide installation, start-up, employee training, engineering maintenance and other services, throughout the productive life of the equipment. For full information, call your nearest Installation & Service Engineering office.

ALABAMA * † Birmingham 35205 2151 Highland Ave. * † † Mobile 36609 1111 S. Beltline Highway	LOUISIANA * † † Baton Rouge 70806 8312 Florida Blvd. * † † New Orleans 70125 4747 Earhart Blvd. * † † Shreveport 71104 2620 Centenary Blvd. * † † Monroe 71201 1028 North 6th St.	OKLAHOMA * † † Oklahoma City 73106 2000 Classen Blvd. * † † Tulsa 74105 P. O. Box 7646, Southside Sta.
ALASKA † Anchorage 99501 115 Whitney Rd.	MARYLAND * † † Baltimore 21201 1 N. Charles St.	OREGON * † Eugene 97401 1170 Pearl St. * † † Portland 97210 2929 NW 29th Ave.
ARIZONA * † † Phoenix 85012 3550 N. Central Ave. † Tucson 85716 151 S. Tucson Blvd.	MASSACHUSETTS * † † Wellesley 02181 1 Washington St.	PENNSYLVANIA * † Allentown 18102 1444 Hamilton St. * † † Philadelphia 19102 3 Penn Center Plaza * † † Pittsburgh 15222 300 6th Avenue Bldg.
ARKANSAS † North Little Rock 72119 120 Main St.	MICHIGAN * † † Detroit 48202 700 Antoinette St. * † † Jackson 49201 210 W. Franklin St. † Saginaw 48607 * † † 1008 Second National Bank Bldg.	SOUTH CAROLINA † † Columbia 29204 2700 Middleburg Dr. † † Greenville 29607 41 No. Pleasantburg Dr.
CALIFORNIA * † † Los Angeles 90054 212 N. Vignes St. † † Palo Alto 94303 960 San Antonio Rd. † † Sacramento 95808 2407 J St. † † San Diego 92103 2560 First Ave. * † † San Francisco 94119 55 Hawthorne St. * † † Vernon 90058 3035 E. 46th St.	MINNESOTA * † † Duluth 55802 300 W. Superior St. * † † Minneapolis 55416 1500 Lilac Drive So.	TENNESSEE * † Chattanooga 37411 * † † 5800 Bldg, Eastgate Center † Memphis 38130 3385 Airways Blvd.
COLORADO * † † Denver 80206 201 University Blvd.	MISSOURI * † † Kansas City 64199 911 Main St. * † † St. Louis 63101 1015 Locust St.	TEXAS * † † Amarillo 79101 303 Polk St. * † † † Beaumont 77704 1385 Calder Ave * † † † Corpus Christi 78401 205 N. Chaparral St. * † † Dallas 75222 8101 Stemmons Freeway * † † El Paso 79945 215 N. Stanton * † † Fort Worth 76102 408 W. Seventh St. * † † † Houston 77027 4219 Richmond Ave. † † San Antonio 78204 434 S. Main St.
CONNECTICUT * † † Meriden 06450 1 Prestige Dr.	MONTANA † Butte 59701 103 N. Wyoming St.	UTAH † Salt Lake City 84111 431 S. Third East St.
FLORIDA † † Jacksonville 32203 4040 Woodcock Dr. † † Miami 33134 4100 W. Flagler St. * † † Tampa 33609 2106 S. Lois Ave.	NEBRASKA * † † Omaha 68102 409 S. 17th St.	VIRGINIA * † † Newport News 23601 311 Main St. * † † Richmond 23230 1508 Willow Lawn Dr. † † Roanoke 24015 2018 Colonial Ave.
GEORGIA * † † Atlanta 30309 1860 Peachtree Rd., NW † † Savannah 31405 5002 Paulsen St.	NEW JERSEY * † † Millburn 07041 25 E. Willow St.	WASHINGTON * † † † Seattle 98188 * † † † 112 Andover Park East, Tukwila † † Spokane 99202 E. 1805 Trent Ave.
HAWAII * † † Honolulu 96813 440 Coral St.	NEW YORK † † Albany 12205 15 Computer Drive, West * † † Buffalo 14205 625 Delaware Ave. * † † † X New York 10022 641 Lexington Ave. * † † Rochester 14604 89 East Ave. * † † Syracuse 13206 3532 James St.	WEST VIRGINIA * † † Charleston 25328 306 MacCorkle Ave., SE
ILLINOIS * † † † Chicago 60680 840 S. Canal St.	NORTH CAROLINA * † † Charlotte 28207 141 Providence Rd. * † † Wilmington † Reigelwood 28456 P. O. Box 186	WISCONSIN * † † Appleton 54911 3003 West College Dr. * † † Milwaukee 53202 615 E. Michigan St.
INDIANA † Evansville 47705 2709 Washington Ave. † Fort Wayne 46807 3606 S. Calhoun St. * † † Indianapolis 46207 3750 N. Meridian St.	OHIO * † † Cincinnati 45206 2821 Victory Pkwy. * † † Cleveland 44104 1000 Lakeside Ave. † † Columbus 43229 1110 Morse Rd. † † Toledo 43606 3125 Douglas Rd. † † Youngstown 44507 272 Indianola Ave.	
IOWA † Davenport 52805 * † † P. O. Box 630, 1039 State St., Bettendorf		
KENTUCKY † Louisville 40218 2300 Meadow Dr.		

GENERAL ELECTRIC SERVICE SHOPS

WHEN YOU NEED SERVICE . . . These GE Service Shops will repair, re-condition, and rebuild your electric apparatus. The facilities are available day and night, seven days a week, for work in the shops or on your pre-

ises. Latest factory methods and genuine GE renewal parts are used to maintain performance of your equipment. For full information about these services, contact your nearest service shop or sales office.

ALABAMA • Birmingham 35211 1500 Mims Ave., S.W. • Mobile 36609 721 Lakeside Dr.	LOUISIANA • Baton Rouge 70814 10955 North Dual St. • New Orleans 70114 1115 DeArmas St.	OKLAHOMA • Tulsa 74145 5220 S. 100th East Ave.
ARIZONA • (Phoenix) Glendale 85019 4911 W. Colter St. • Phoenix 85019 3940 W. Clarendon St. • Tucson 85713 2042 So. Palo Verde Ave.	MARYLAND • Baltimore 21230 920 E. Fort Ave.	OREGON • Eugene 97402 570 Wilson St. • Portland 97210 2727 NW 29th Ave.
CALIFORNIA • Los Angeles 90301 6900 Stanford Ave. • (Los Angeles) Anaheim 92805 • 3601 E. LaPalma Ave. • (Los Angeles) Inglewood 90301 • 228 W. Florence Ave. • Sacramento 95814 89 North 17th St. • (San Francisco) Oakland 94608 • 1650 34th St.	MASSACHUSETTS • * Δ (Boston) Medford 02155 • 3360 Mystic Valley Pkwy.	PENNSYLVANIA • Allentown 18103 668 E. Highland St. • (Delaware Valley) Cherry Hill, N. J., 08034 • 1790 E. Marilton Pike • Johnstown 15802 841 Oak St. • Philadelphia 19124 1040 East Erie Ave. • (Pittsburgh) West Mifflin 15122 • 4930 Buttermilk Hollow Rd. • York 17403 54 N. Harrison St.
COLORADO • Denver 80205 3353 Larimer St.	MICHIGAN • * Δ (Detroit) Riverview 18075 Krause Ave. • Flint 48505 1506 E. Carpenter Rd.	SOUTH CAROLINA • (Charleston) No. Charleston 29401 • 2490 Debonair St.
CONNECTICUT • (Southington) Plantsville 06479 • 370 Atwater St.	MINNESOTA • Duluth 55807 50th Ave. W & St. Louis Bay • Minneapolis 55430 2025 49th Ave., N.	TENNESSEE • Knoxville 37914 • 2621 Governor John Sevier Hwy. • Memphis 38107 708 North Main St.
FLORIDA • Jacksonville 32203 2020 W. Beaver St. • (Miami) Hialeah 33010 1062 East 28th St. • Tampa 33601 19th & Grant Sts.	MISSOURI • Kansas City 64120 3525 Gardner Ave. • St. Louis 63110 1115 East Rd.	TEXAS • Beaumont 77705 1490 W. Cardinal Dr. • Corpus Christi 78401 115 Waco St. • Dallas 75235 3202 Manor Way • Houston 77036 5534 Harvey Wilson Dr. • Houston 77036 6916 Harwin Dr. • Midland 79701 704 S. Johnston St.
GEORGIA • (Atlanta) Chamblee 30341 • 5035 Peachtree Industrial Blvd. • Atlanta 2379 John Glenn Dr.	NEW JERSEY • New Brunswick 08902 3 Lawrence St.	UTAH • Salt Lake City 84110 301 S. 7th West St.
ILLINOIS • Chicago 60638 6045 S. Nottingham Ave.	NEW MEXICO • Albuquerque 87109 4420 McLeod Rd. NE	VIRGINIA • Richmond 23224 1403 Ingram Ave. • Roanoke 24013 1004 River Ave., SE
INDIANA • Evansville 47711 401 N. Congress Ave. • Ft. Wayne 46803 1731 Edsall Ave. • Hammond 46320 1138 164th Place • Indianapolis 46223 1740 W. Vermont St.	NEW YORK • Albany 12205 1097 Central Ave. • (Buffalo) Tonawanda 14150 175 Milens Rd. • (Long Island) Old Bethpage 11804 • 183 Bethpage-Sweet Hollow Rd. • (New York City) North Bergen, N. J. 07012 • 6001 Tonnelle Ave. • (New York City) Clifton, N. J. 07012 • 9 Brighton Rd. • Δ Schenectady 12305 1 River Rd. • Syracuse 13208 1015 E. Hiawatha Blvd.	WASHINGTON • Seattle 98134 3422 First Ave., South • Spokane 99211 E. 4323 Mission St.
IOWA • (Davenport) Bettendorf 52722 1025 State St.	NORTH CAROLINA • Charlotte 28208 2328 Thrift Rd.	WEST VIRGINIA • Charleston 25328 306 MacCorkle Ave., SE
KENTUCKY • Louisville 40209 3900 Crittenden Drive	OHIO • Akron (Canton) 44720 • 7900 Whipple Ave. N. W. • Cincinnati 45202 444 West 3rd St. • Δ Cleveland 44125 4477 East 49th St. • Columbus 43229 6660 Huntley Rd. • Toledo 43605 405 Dearborn Ave. • Youngstown 44507 272 E. Indianola Ave.	WISCONSIN • (Appleton) Menasha 54910 1725 Racine St. • Milwaukee 53207 235 W. Oklahoma Ave.

• Electrical/Mechanical Service Shop * Instrumentation Shop Δ Special Manufacturing Shop