



## INSTRUCTIONS

GEK-65544  
Insert Booklet GEK-49794B

### STATIC PILOT WIRE RELAY TYPE SPD99AA

#### INTRODUCTION

This supplement, together with GEK-49794B, constitutes the instructions for the SPD99AA relay.

#### DESCRIPTION

The SPD99AA is similar to the SPD11A with the following exceptions:

1. The SPD99AA is rated 24 volts DC.
2. The SPD99AA uses external inverter 0138B7286.

#### DC CONTROL VOLTAGE TAPS

The 0138B7286 external inverter converts 24 volts DC to 48 volts DC. Therefore, when wiring the external inverter, the DC control voltage taps in the SPD relay (located at the left of the upper tap block) should be placed in the left position which is labeled 48 volts.

#### EXTERNAL INVERTER CONNECTIONS

The 0138B7286 external inverter is designed to supply one SPD99A pilot wire relay and one SPA pilot wire monitoring relay (Type 99AA, AB, BA, or BB). Connections for the DC control power are made as shown in Fig. 1 of this booklet.

*These instructions do not purport to cover all details or variations in equipment nor to provide for every possible contingency to be met in connection with installation, operation or maintenance. Should further information be desired or should particular problems arise which are not covered sufficiently for the purchaser's purposes, the matter should be referred to the General Electric Company.*

*To the extent required the products described herein meet applicable ANSI, IEEE and NEMA standards; but no such assurance is given with respect to local codes and ordinances because they vary greatly.*

EXTERNAL INVERTER MOUNTING

The 0138B7286 External Inverter can be mounted on the rear of the SPD relay or at a convenient location near the relay. Mounting on the rear of the SPD is shown in Fig. 3 of this booklet.

DC CURRENT BURDENS

Table I below indicates the burden of the external inverter on the 24 volt DC station supply under a variety of operating conditions.

TABLE I

Connected Relays	DC Current - ma	With SPA's TTA Energized DC Current - ma
None	400	-
SPD99AA Alone	650	-
SPD99AA plus SPA99AA	800	-
SPD99AA plus SPA99AB	800	-
SPD99AA plus SPA99BA	800	950
SPD99AA plus SPA99BA	800	950

List of Illustrations

- Fig. 1 - Supplementary External Connections Diagram (0275A4432)
- Fig. 2 - Internal Connections for 0138B7286 Inverter (0275A4431)
- Fig. 3 - Outline Diagram for 0138B7286 Inverter (0275A4433)

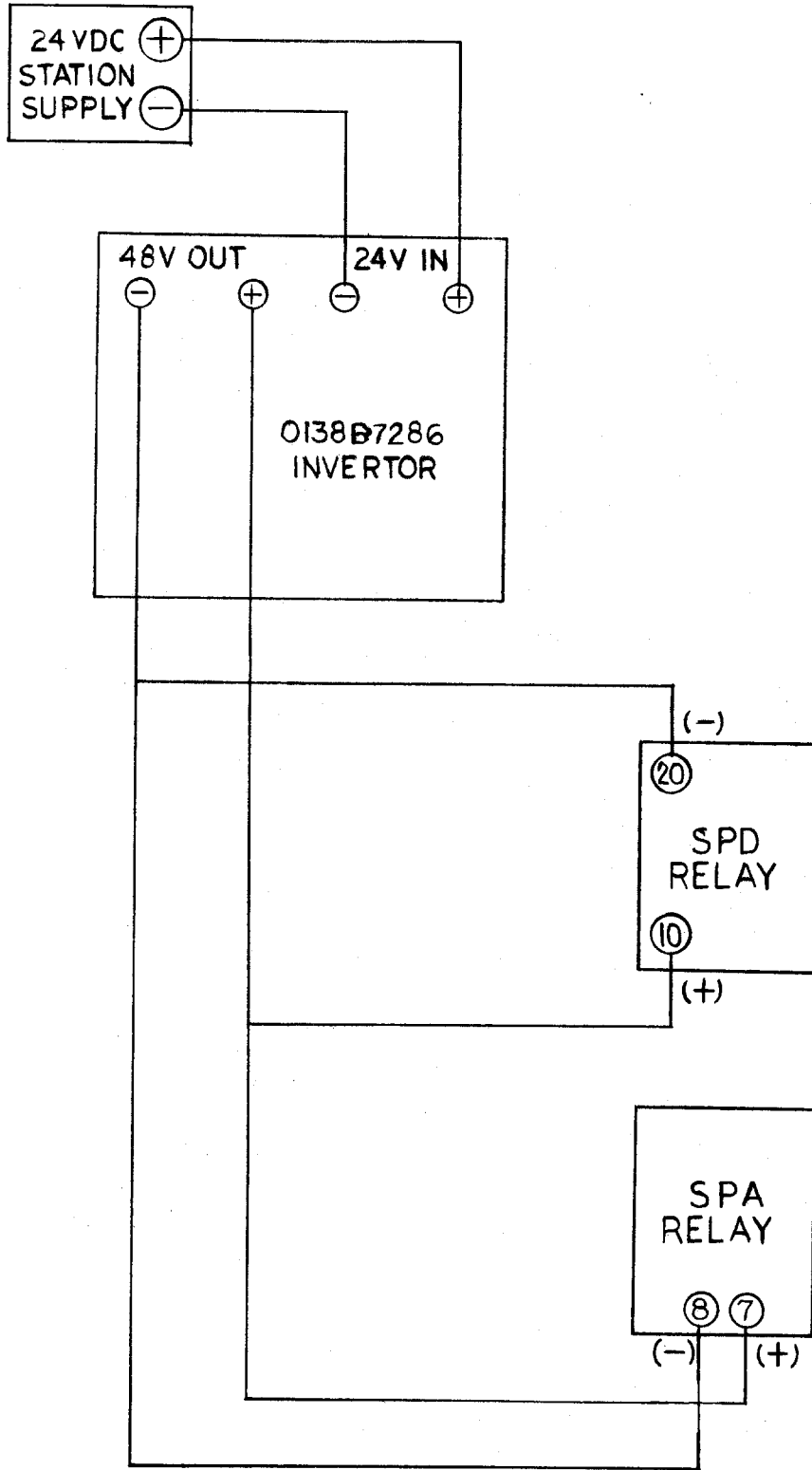
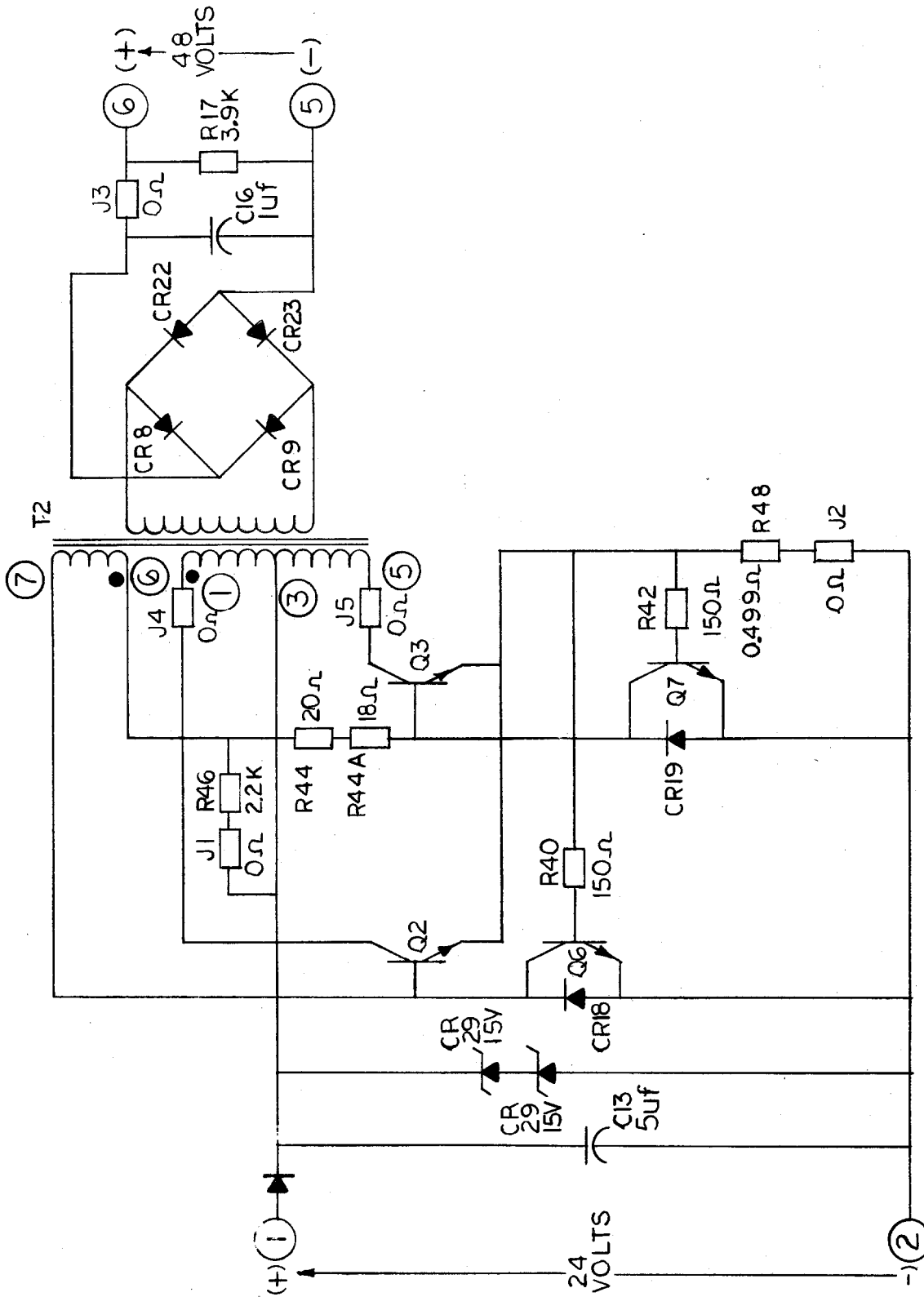
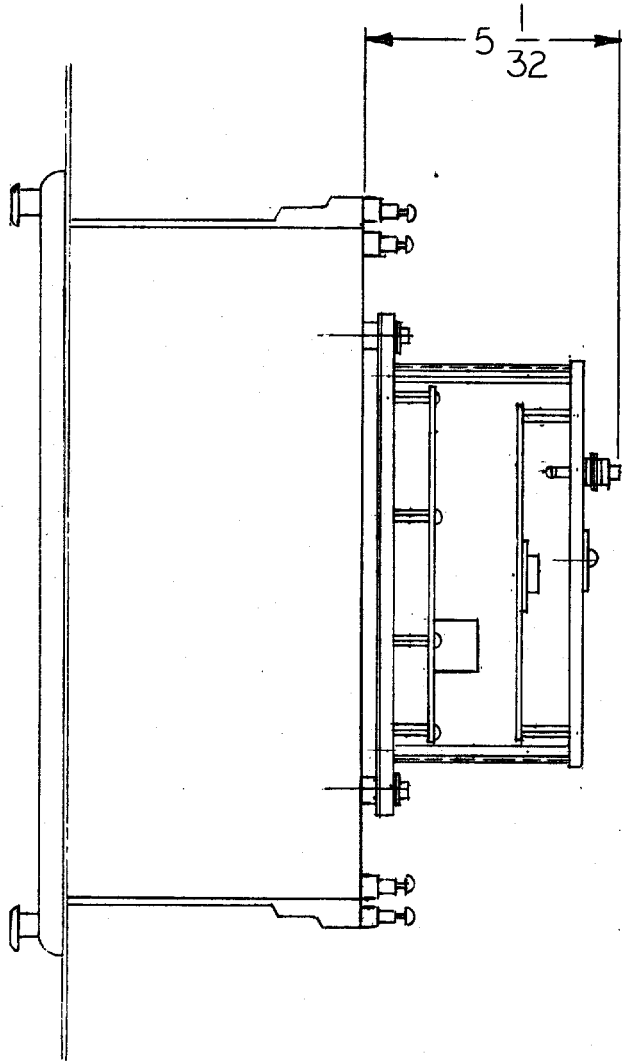


Fig. 1 (0275A4432-0) Supplementary External Connections Diagram

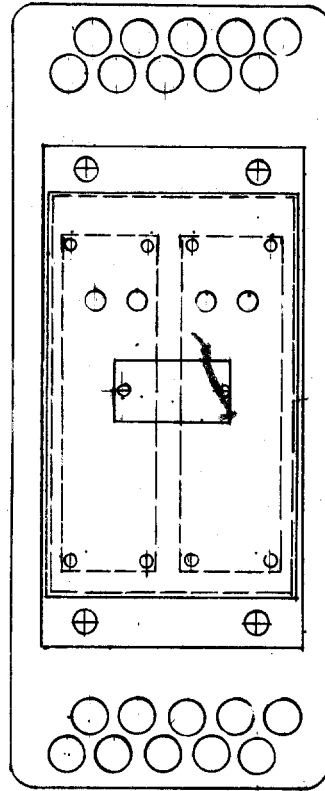


INTERNAL CONNECTIONS FOR INVERTOR.

Fig. 2 (0275A4431-0) Internal Connections for 0138B7286 Inverter



SIDE VIEW



REAR VIEW

Fig. 3 (0275A4433-0) Outline Diagram for 0138B7286 Inverter