



THREE-POLE TRIPPING RELAY SYSTEM

TLS1321

INTRODUCTION

This instruction book, together with insert book GEK-86638, forms the instructions for the TLS1321 Modular Relay.

DESCRIPTION

The TLS1321 modular relay is a three-pole tripping relay system having two dedicated tripping zones and blocking units and is similar to the TLS relay described in instruction book GEK-86638. The distinguishing characteristic of the TLS 1321 is the output contact arrangement. The complete elementary diagram for the TLS1321 is included as figures 1A through 1F in this book, and completely replaces figures 22A through 22E in GEK-86638.

These instructions do not purport to cover all details or variations in equipment nor to provide for every possible contingency to be met in connection with installation, operation or maintenance. Should further information be desired or should particular problems arise which are not covered sufficiently for the purchaser's purposes, the matter should be referred to the General Electric Company.

To the extent required the products described herein meet applicable ANSI, IEEE and NEMA standards; but no such assurance is given with respect to local codes and ordinances because they vary greatly.

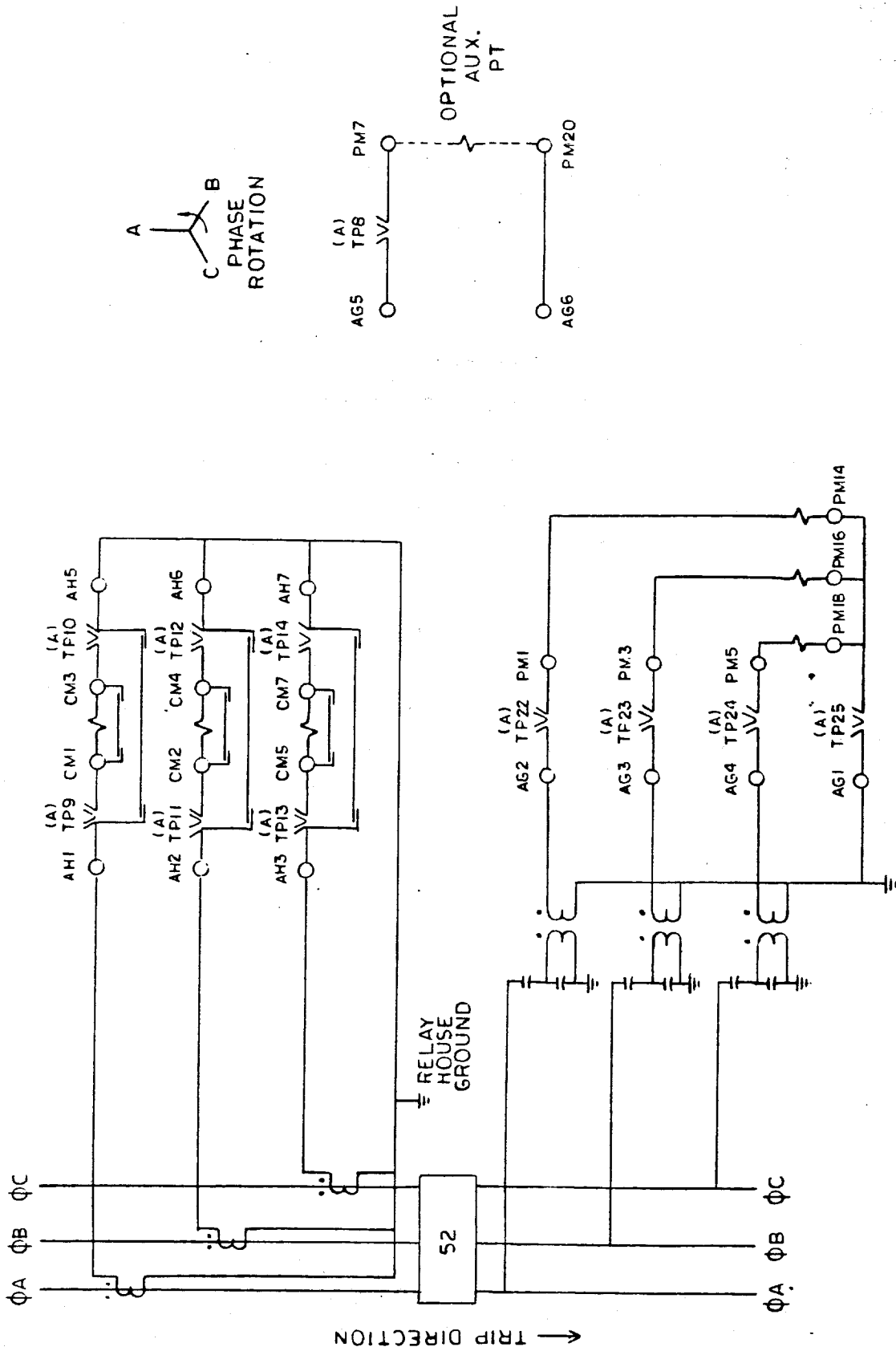


Figure 1A (0138B7774 Sheet 1) Elementary Diagram for the TLS 1321

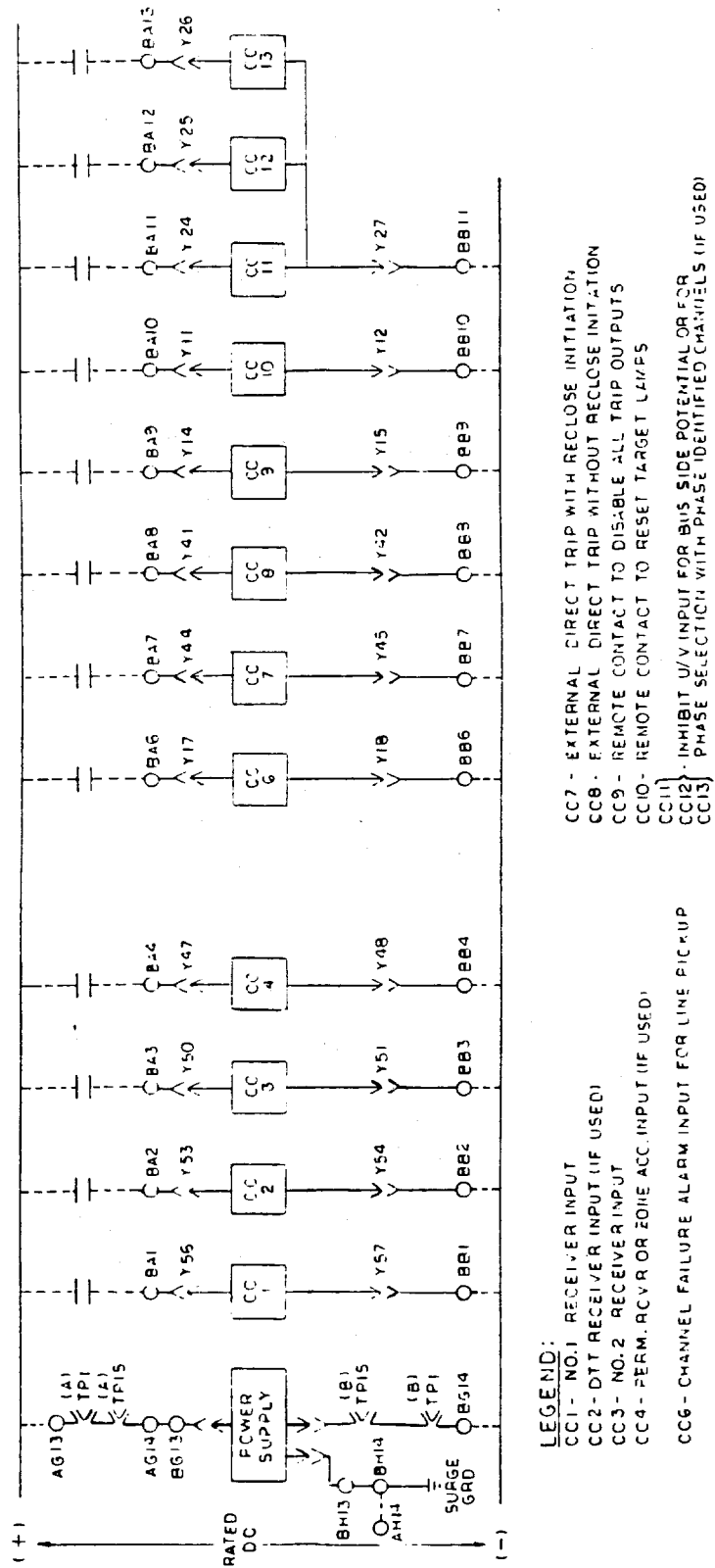
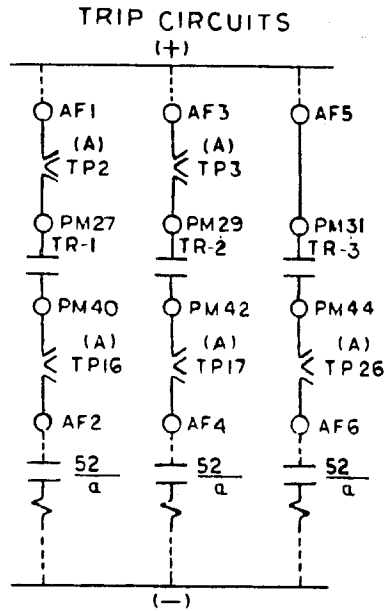


Figure 1B (0138B7774 Sheet 2) Elementary Diagram for the TLS 1321



BREAKER FAILURE INITIATION

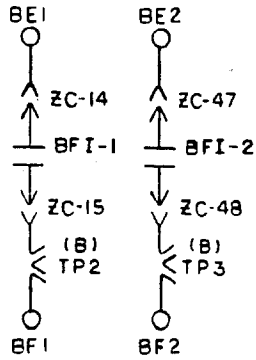


Figure 1C (0138B7774 Sheet 3) Elementary Diagram for the TLS 1321

* (NOTE: POWER SUPPLY ALARM CONTACTS ARE SHOWN DEENERGIZED. UNDER NORMAL CONDITIONS CONTACTS ARE ENERGIZED.)

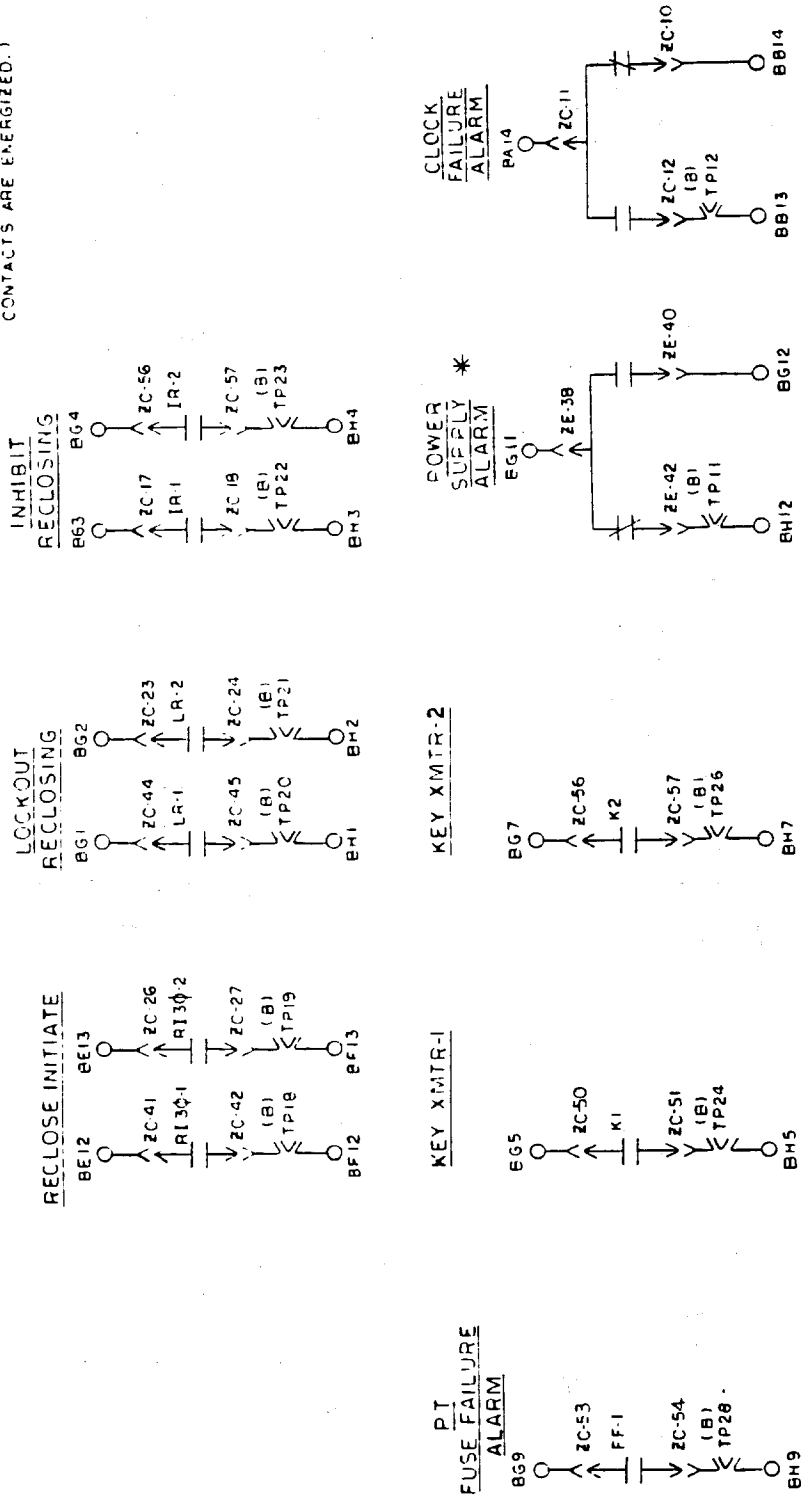
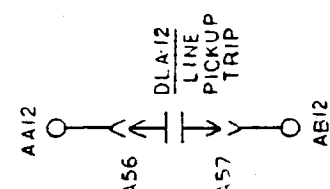
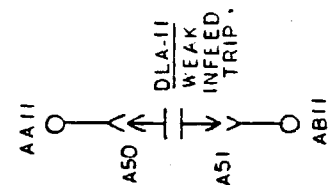
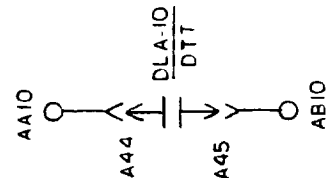
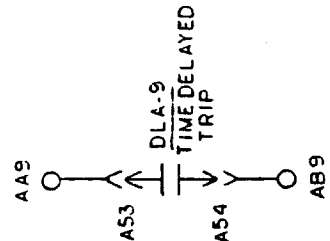
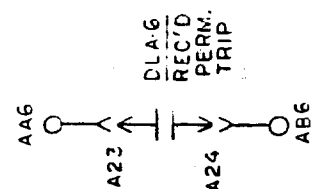
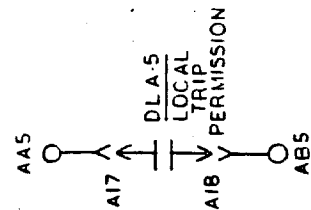
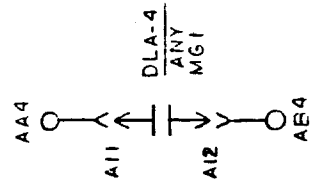
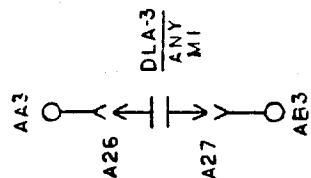
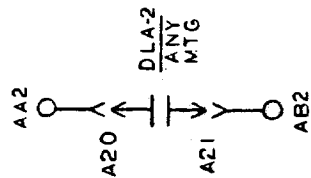
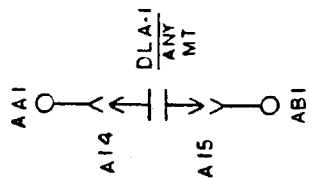
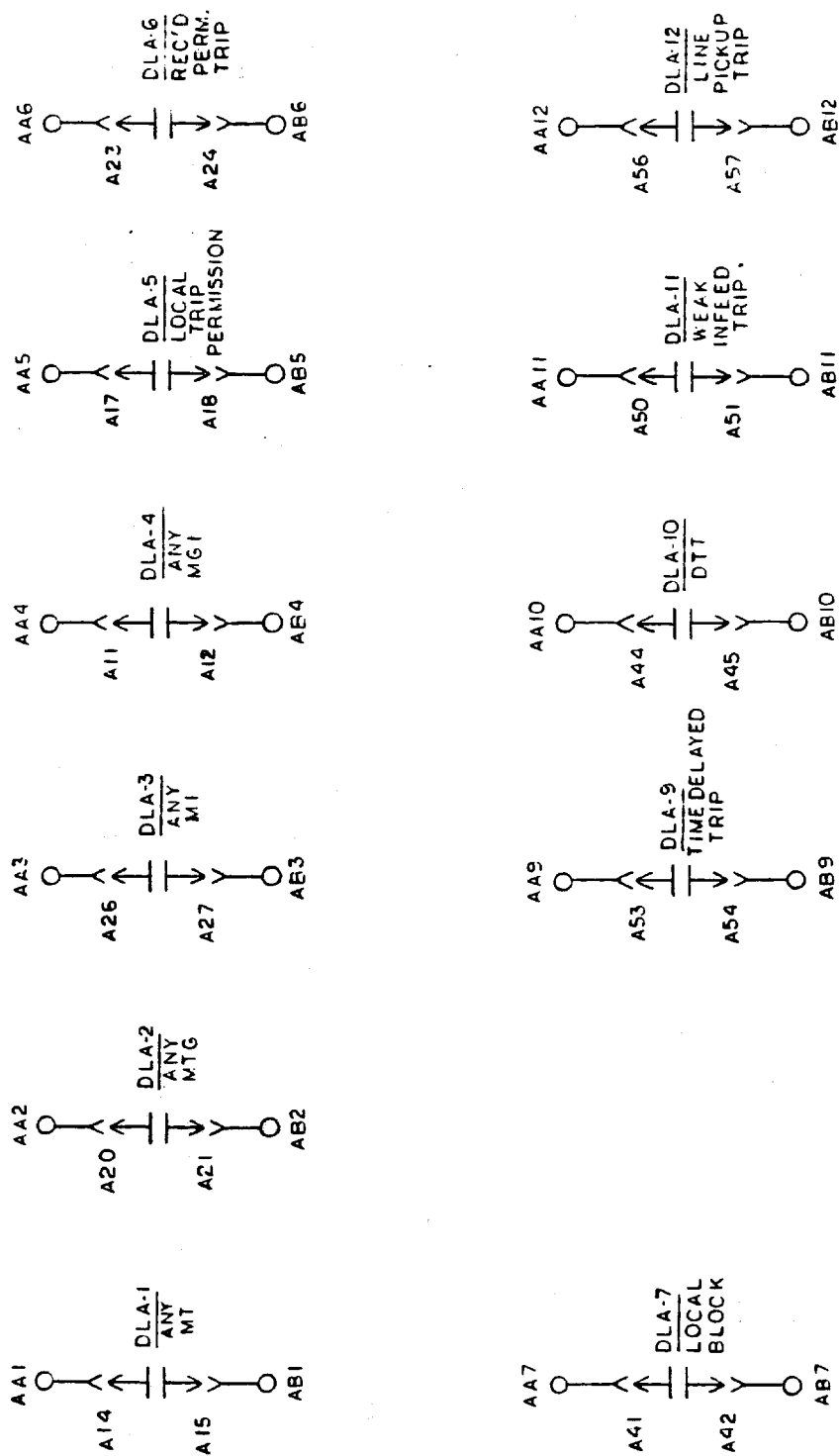


Figure 1D (0138B7774 Sheet 4) Elementary Diagram for the TLS 1321



DLA CONTACTS

Figure 1E (0138B7774 Sheet 5) Elementary Diagram for the TLS 1321

BREAKER FAILURE INITIATION

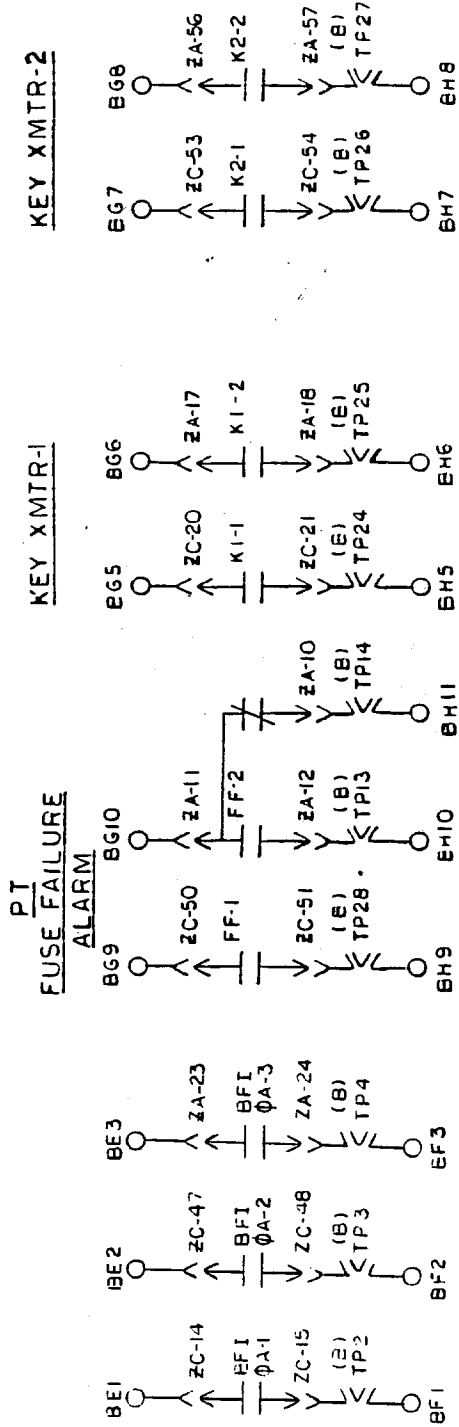


Figure 1F (0138B7788 Sheet 1) Elementary Diagram for the TLS 1321

**GENERAL ELECTRIC COMPANY
POWER SYSTEMS MANAGEMENT BUSINESS DEPT.
MALVERN, PA 19355**

GENERAL  ELECTRIC