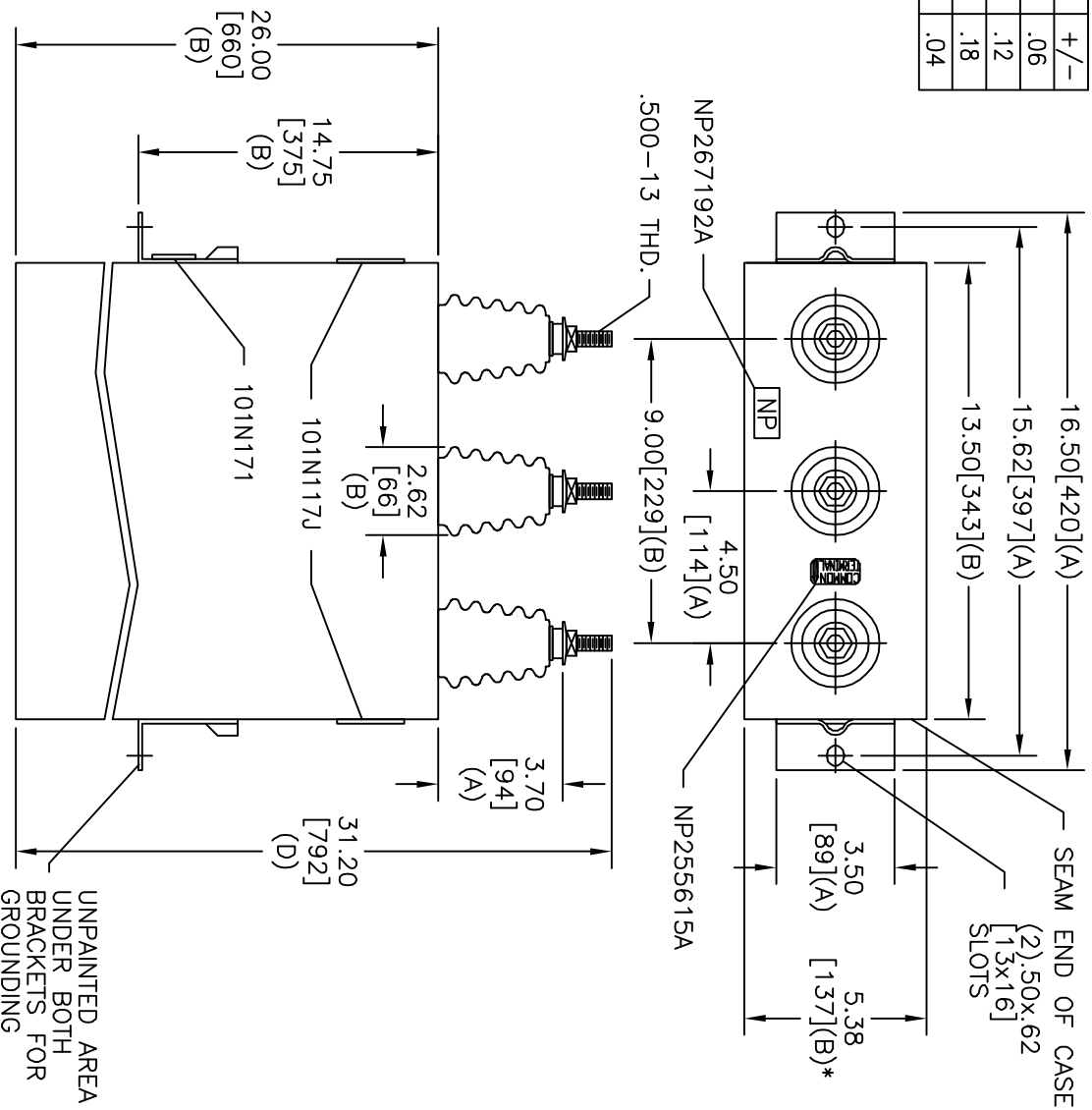


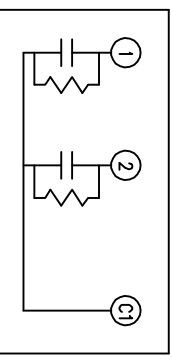
TOL	+/-
A	.06
B	.12
C	.18
D	.04

\* UP TO +.50[13]  
CASE BULGE



SIZE	DWG NO	SHT	REV
A	16L0003WH3	2	2
REV	DESCRIPTION	DATE	APPROVED
2	CHG TO STD SIZE	11/21/2006	BTR

TERM	UF
1	94.1
2	23.5



213.6/54.4	KVAR/TAP		
2454V	1 PH		KVBIL
267	KVAR	60	HZ
CAT	16L0003WH3		SN
	2.4	GAL.	
101N171	MFG DATE		
	READ	GEH-2743	

**INDUSTRIAL SYSTEMS**  
FORT EDWARD, N.Y., U.S.A.

DRAWN E. McGinn  
ISSUED

DATE 4/10/1997  
DATE 4/16/1997

SIZE **A**  
SCALE

**OUTLINE**  
16L0003WH3

SHEET 2 CONT 3

DISTR. TO