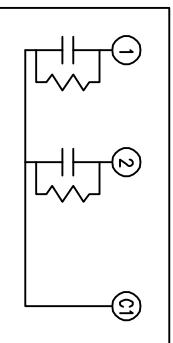
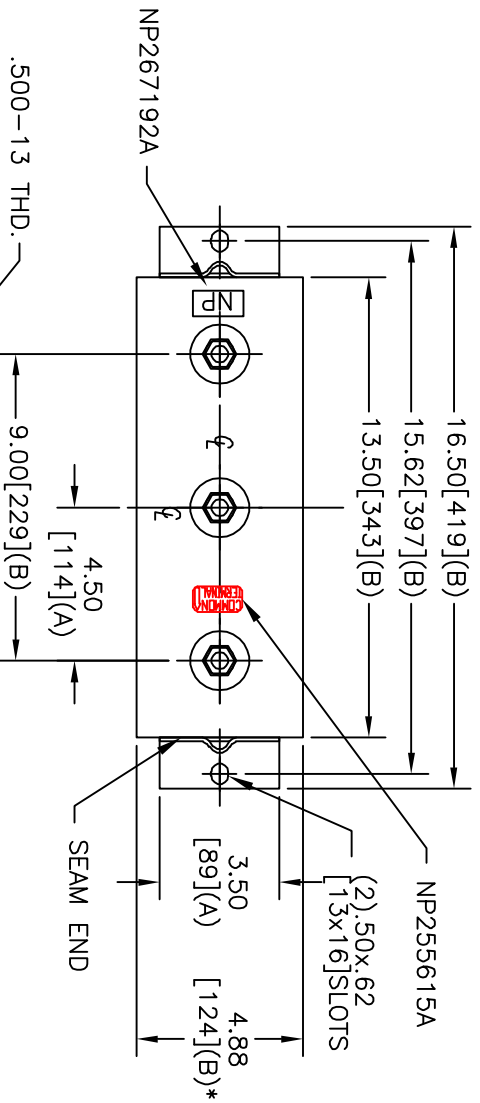


SIZE	DWG NO	SHT	REV
A	16L0010WH3	2	2
REV	DESCRIPTION	DATE	APPROVED
2	WIDTH WAS 5.12	10/24/06	BTR

TERM	UF	KVAR
1	141.47	120
2	141.47	120



SCHEMATIC DIAGRAM - 212

2X120 KVAR SECTIONS		
1500V	1 PH	KVBIL
240	KVAR	60 HZ
CAT	16L0010WH3	SN
	2.3 GAL.	
101N171	MFG DATE	
	READ	GEH - 2743

* UP TO +.50[13]
CASE BULGE

MAX. TERMINAL
TIGHTENING TORQUE
15 FT-LBS
NP267192A

GE ENERGY FORT EDWARD, N.Y., U.S.A.		SIZE	A
DRAWN	E. McGinn	DATE	4/17/1997
ISSUED		DATE	4/23/1997
		SCALE	
OUTLINE 16L0010WH3		SHEET	2
		CONT	3

DISTR. TO