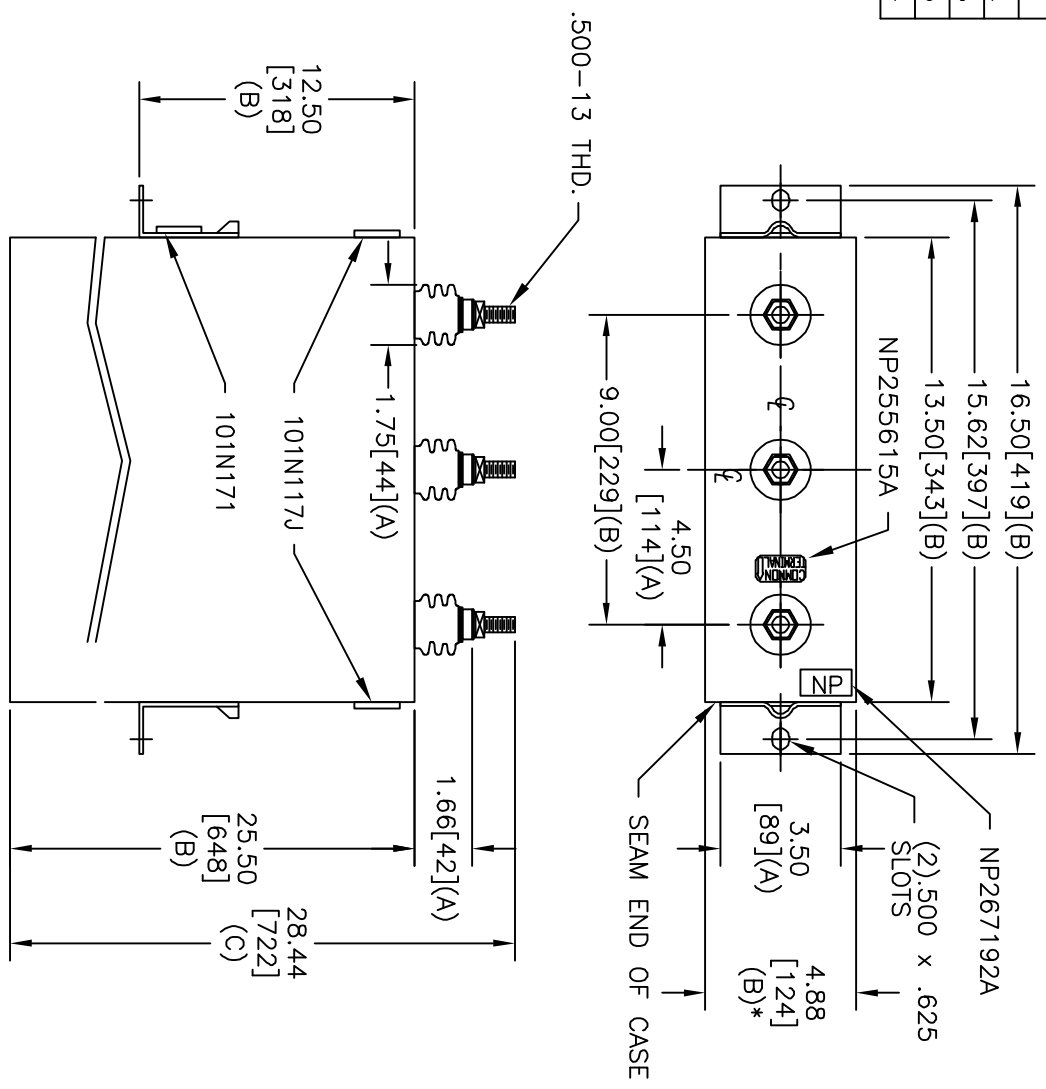
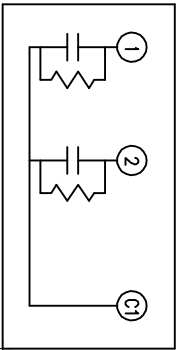


TOL	+/-
A	.06
B	.12
C	.18
D	.25
E	.04



TERM	UF	KVAR
1	238.7	90
2	238.7	90



SCHEMATIC DIAGRAM - 212

2 X 90 KVAR SECTIONS	
1000 V	1 PH
180 KVAR	60 HZ
CAT 16L0011WH3	SN
2.3 GAL.	
MFG DATE	
READ DATE	
101N171	GEH-2743

SIZE	DWG NO	SH	REV
A	16L0011WH3	2	2
REV	DESCRIPTION	DATE	APPROVED
2	RE TRACE	6/26/06	BTR

* UP TO +.50 CASE BULGE

MAX. TERMINAL TIGHTENING TORQUE 15 FT-LBS

NP267192A



GE ENERGY
FORT EDWARD, N.Y., U.S.A.

DRAWN E. McGinn

ISSUED

DATE 12/6/1996

DATE 12/11/1996

SIZE A

SCALE

OUTLINE
16L0011WH3

SHEET 2 CONT 3

DISTR. TO