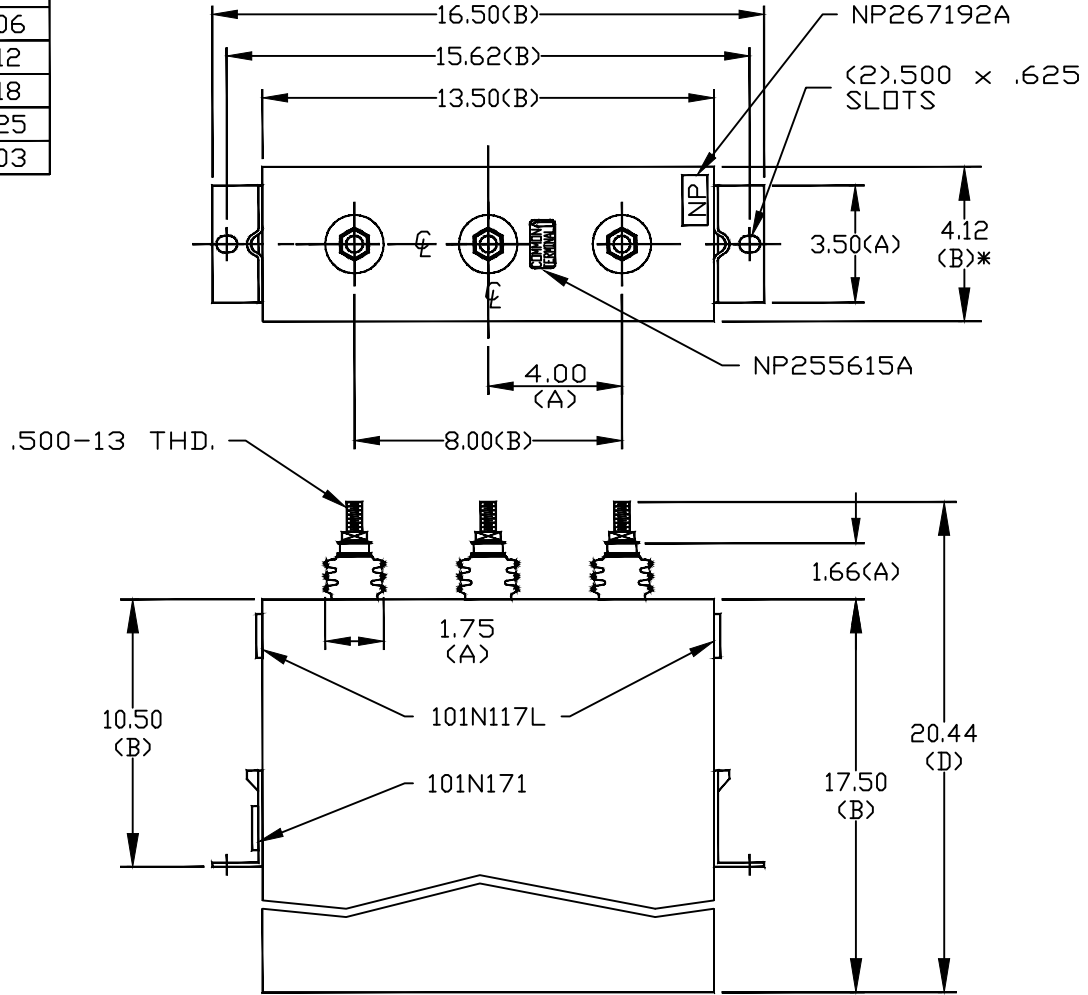
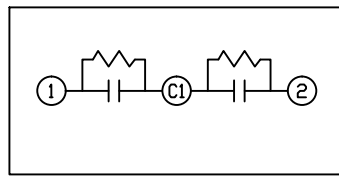


TOL	+/-
A	.06
B	.12
C	.18
D	.25
E	.03

SIZE A	DWG NO 16L0022WH3	SHT 2	REV 1
REV 1	DESCRIPTION NEW BORDER	DATE 8/19/11	APPROVED DMR



TERM	uF	kVAR
1	313.4	25
2	313.4	25



SCHEMATIC DIAGRAM - 227

25 KVAR/TAP  
 460 V 1 PH KVBIL  
 50 KVAR 60 HZ  
 CAT. 16L0022WH3  
 1.4 GAL.  
 MFG DATE  
 101N171 READ GEH-2743

\* UP TO +.50  
 CASE BULGE

MAX. TERMINAL  
 TIGHTENING TORQUE  
 15 FT-LBS  
 NP267192A

<b>GE ENERGY</b> FORT EDWARD, N.Y., U.S.A.		SIZE A	<h1>OUTLINE</h1> <h2>16L0022WH3</h2>	
DRAWN DMR	DATE	SCALE		
ISSUED	DATE	SHEET 2	CONT ON	3

DISTR. TO