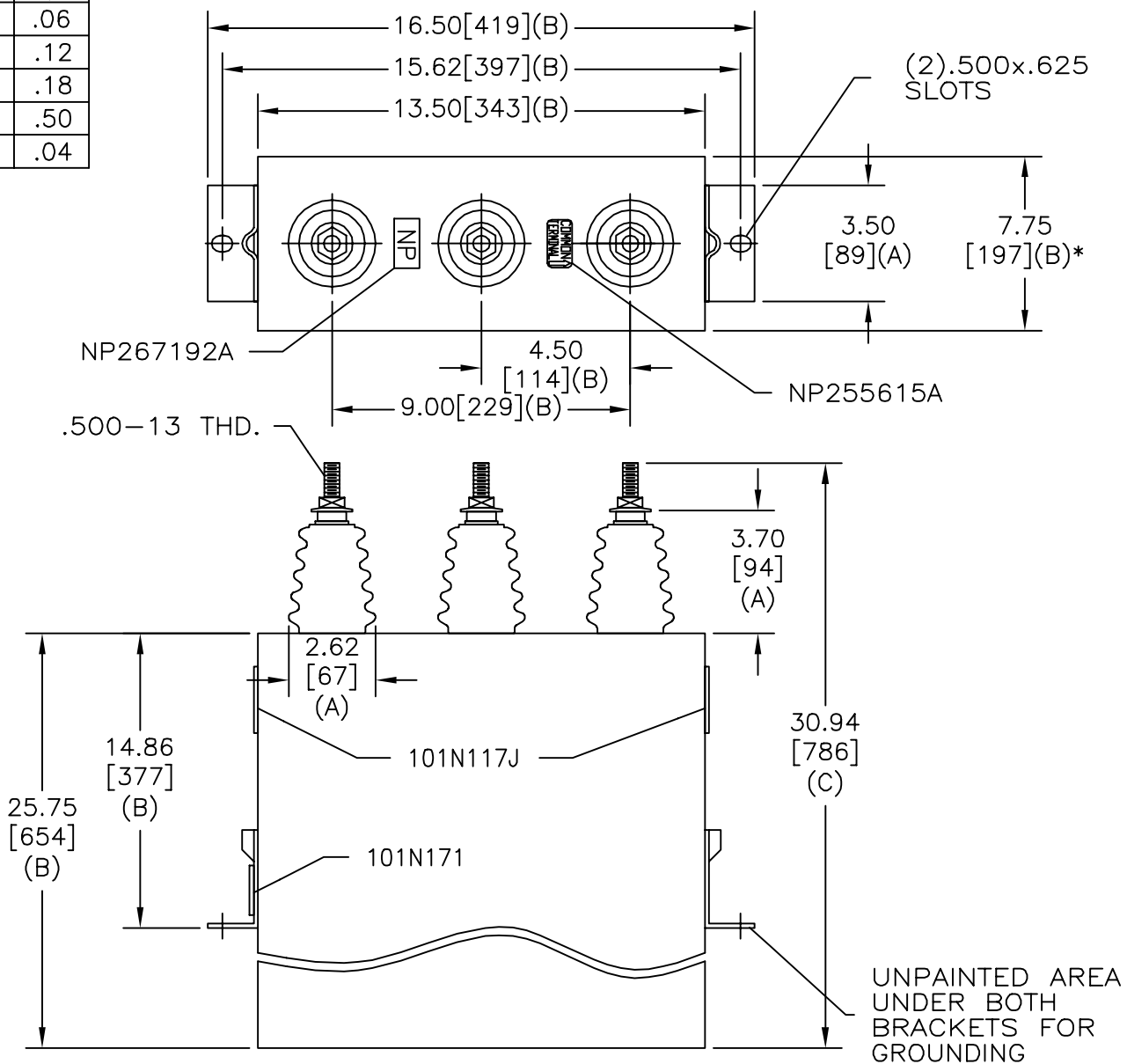
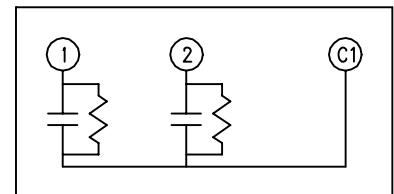


| TOL | +/- |
|-----|-----|
| A   | .06 |
| B   | .12 |
| C   | .18 |
| D   | .50 |
| E   | .04 |

|           |                                  |                  |                 |
|-----------|----------------------------------|------------------|-----------------|
| SIZE<br>A | DWG NO<br>16L0028WH3             | SHT<br>2         | REV<br>1        |
| REV<br>1  | DESCRIPTION<br>DEL SEAM END NOTE | DATE<br>12/18/02 | APPROVED<br>BTR |



\* UP TO +.50 [13] CASE BULGE



SCHEMATIC DIAGRAM - 212

FORCED AIR COOLING REQUIRED  
 2800V 1 PH kVBIL  
 460 KVAR 60 Hz  
 CAT 16L0028WH3 SN  
 5.50 GAL.  
 MFG DATE  
 101N171 READ GEH- 2743

MAX. TERMINAL  
 TIGHTENING TORQUE  
 15 FT-LBS

NP267192A

|   |           |                   |
|---|-----------|-------------------|
| INDUSTRIAL SYSTEMS<br>FORT EDWARD, N.Y., U.S.A. |           | SIZE<br>A         |
| DRAWN   | E. McGinn | DATE AUG 20, 1996 |
| ISSUED  |           | DATE 8-21-96      |

OUTLINE  
 16L0028WH3

SHEET 1 CONT ON 2

DISTR. TO