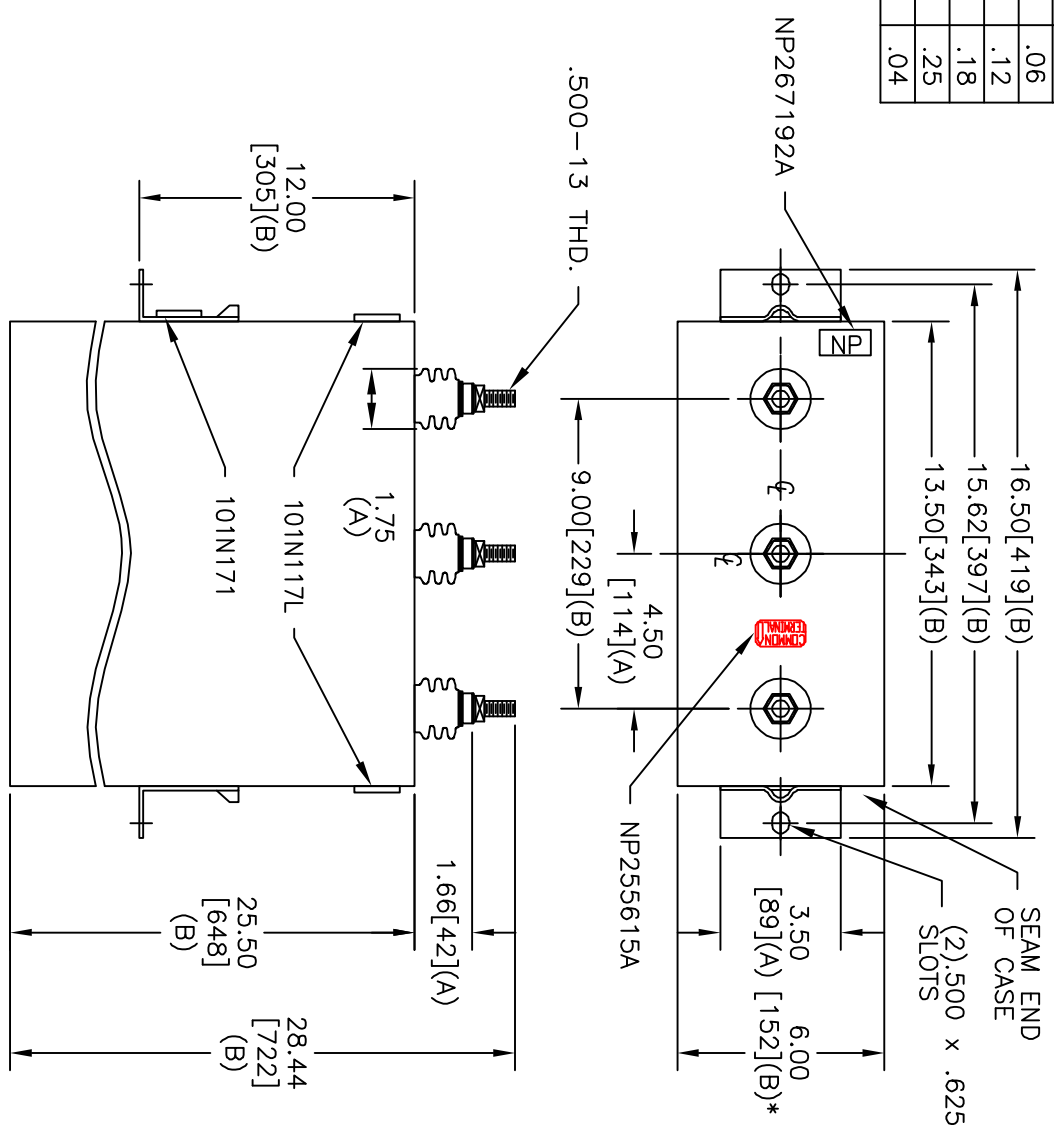
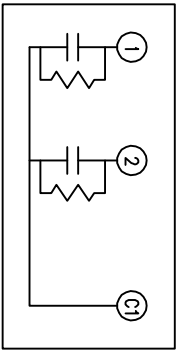


TOL	+/-
A	.06
B	.12
C	.18
D	.25
E	.04



SIZE	DWG NO	SHT	REV
A	16L0051WH3	2	2
REV	DESCRIPTION	DATE	APPROVED
2	REDRAW	2/9/2007	BTR

TERM	UF	KVAR
1	170.9	165
2	170.9	165



SCHEMATIC DIAGRAM - 212

2X170.9 UF/TAP		KVBIL
1600 V	1 PH	
330 KVAR	60 HZ	
CAT 16L0051WH3	SN	
2.9 GAL.	MFG DATE	
101N171	READ	GEH-2743

* UP TO +.50
CASE BULGE

MAX. TERMINAL
TIGHTENING TORQUE
15 FT-LBS

NP267192A

GE ENERGY FORT EDWARD, N.Y., U.S.A.	
DRAWN	E. McGinn
ISSUED	
DATE	5/28/1998
DATE	6/3/1998

SIZE	A
SCALE	
<h1>OUTLINE</h1> <h2>16L0051WH3</h2>	
SHEET	2
CONT	3

DISTR. TO