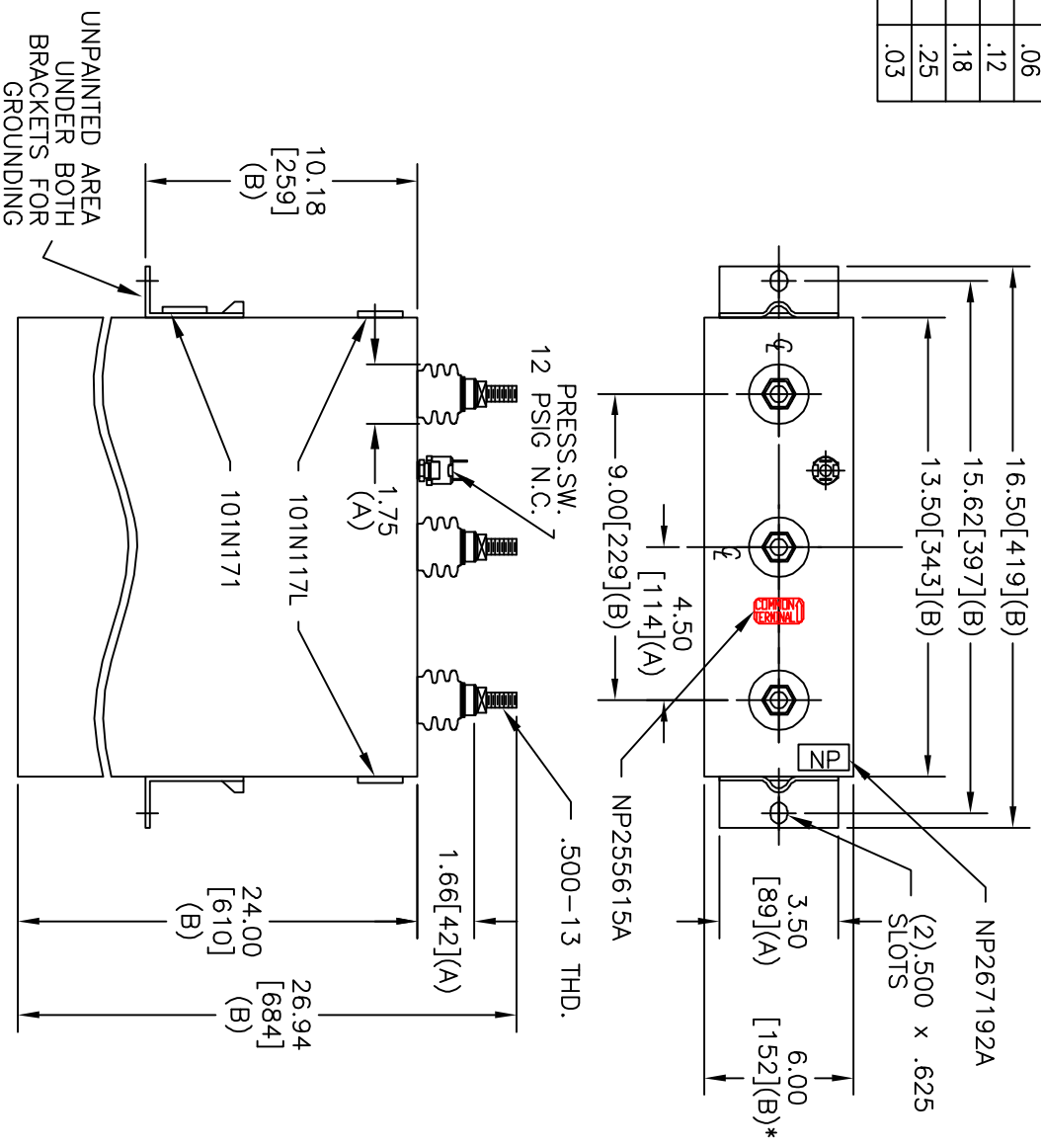
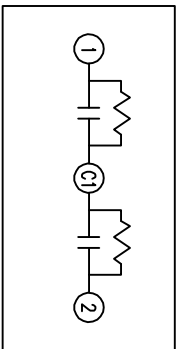


TOL	+/-
A	.06
B	.12
C	.18
D	.25
E	.03



SIZE	DWG NO	SHT	REV
A	16L0059WH4	2	2
REV	DESCRIPTION	DATE	APPROVED
2	CHG 101N1171 TO L	4/2/2007	BTR



SCHEMATIC DIAGRAM - 227

2x100 KVAR/TAP		
800V	1 PH	KVBIL
200	KVAR	60 HZ
CAT	16L0059WH4	SN
	2.6 GAL.	
101N171	MFG DATE	
	READ	GEH-2743

* UP TO +.50
CASE BULGE

MAX. TERMINAL
TIGHTENING TORQUE
15 FT-LBS

NP267192A

GE ENERGY FORT EDWARD, N.Y., U.S.A.		SIZE	A
DRAWN	E. McGinn	DATE	10/11/1996
ISSUED		DATE	10/16/1996
		SCALE	

<h1>OUTLINE</h1> <h2>16L0059WH4</h2>		SHEET	2	CONT	3
--------------------------------------	--	-------	---	------	---

DISTR. TO