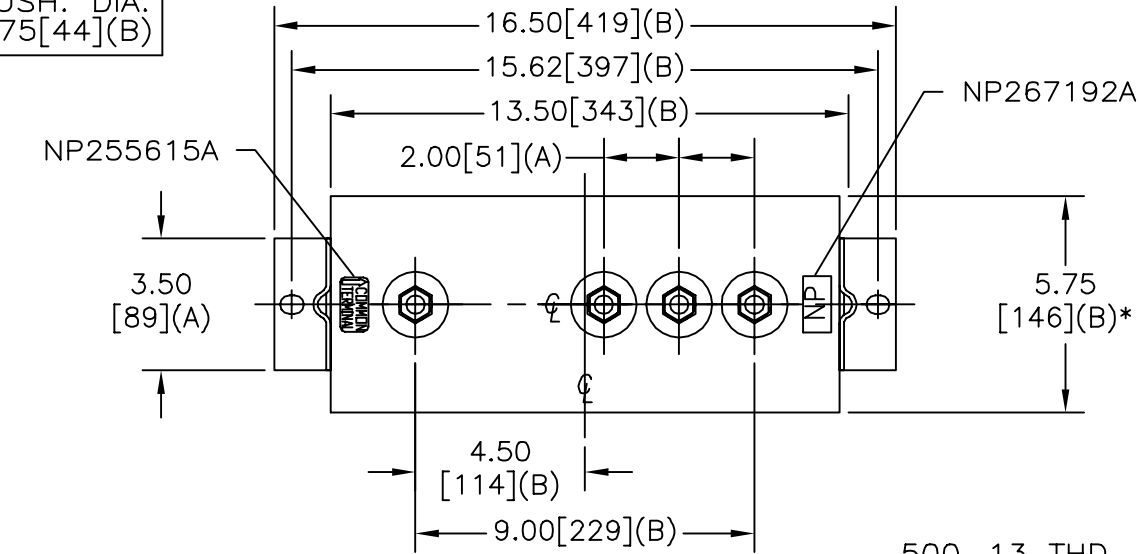
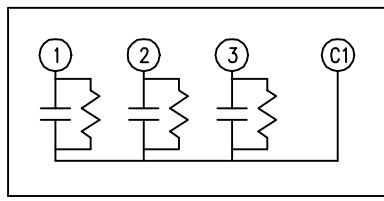


TOL	+/-	BUSH. DIA.
A	.06	1.75[44](B)
B	.12	
C	.18	
D	.50	
E	.04	

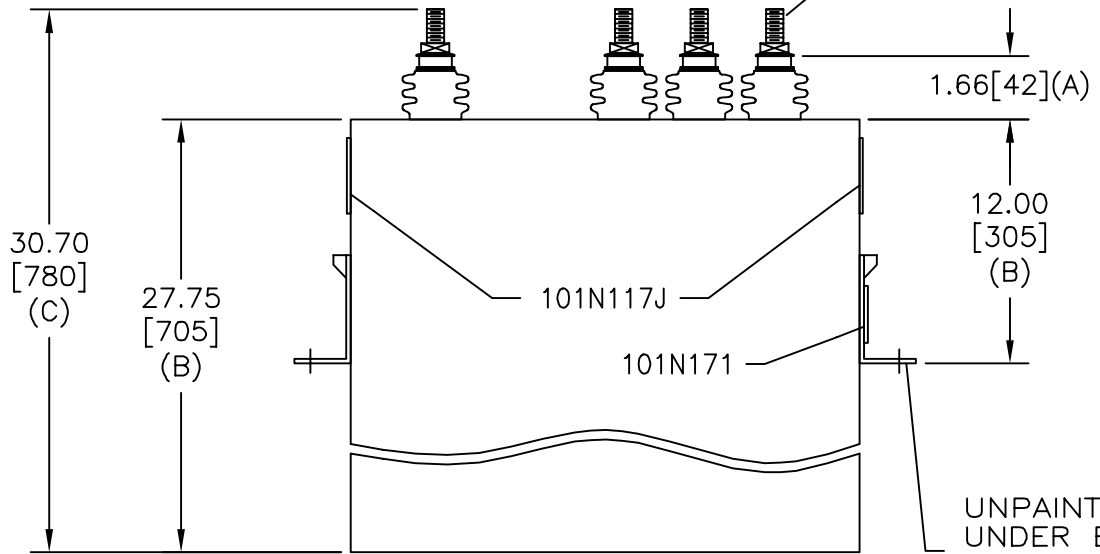
SIZE A	DWG NO 16L0067WH3	SHT 2	REV 3
REV 3	DESCRIPTION CHG CAT NO.	DATE 6/18/03	APPROVED BTR



TERM	μF	kVAR
1	497.4	100
2	497.4	100
3	124.4	25



SCHEMATIC DIAGRAM - 322



800V 1 PH kVBIL
 225 KVAR 50 Hz
 CAT 16L0067WH3 SN
 3.00 GAL.
 MFG DATE
 101N171 READ GEH- 2743

UNPAINTED AREA
 UNDER BOTH
 BRACKETS FOR
 GROUNDING

* UP TO +.50
 CASE BULGE

MAX. TERMINAL
 TIGHTENING TORQUE
 15 FT-LBS

NP267192A

INDUSTRIAL SYSTEMS FORT EDWARD, N.Y., U.S.A.		SIZE A
DRAWN E. McGinn	DATE DEC 18, 1996	SCALE
ISSUED	DATE 12/18/96	

<h1>OUTLINE</h1> <h2>16L0067WH3</h2>	
SHEET 2	CONT ON 3

DISTR. TO