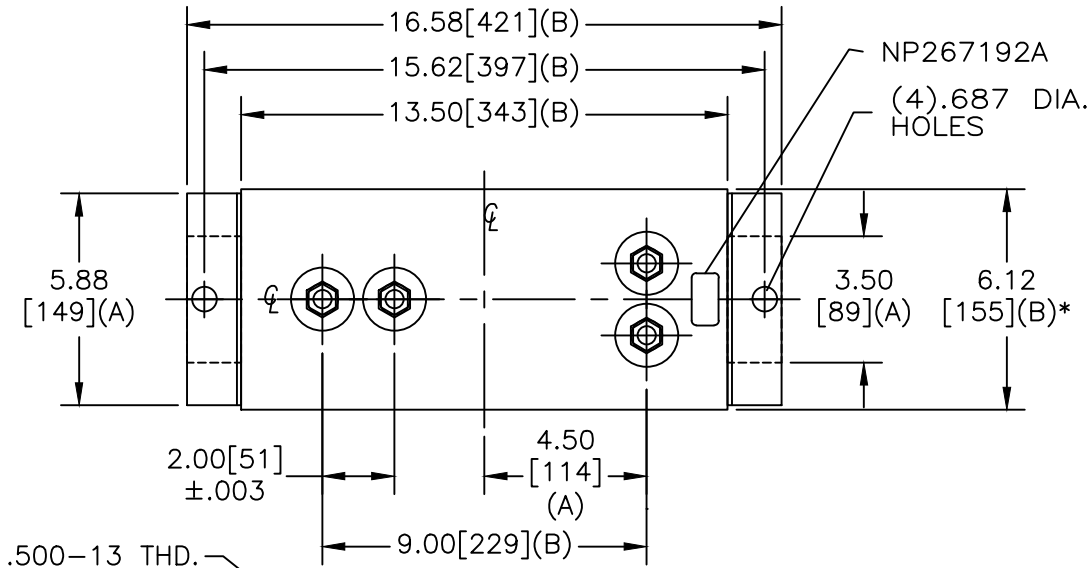


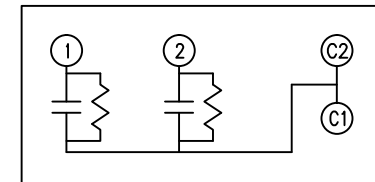
SIZE A	DWG NO 16L0070WH3	SHT 2	REV 2
REV 2	DESCRIPTION 117L WAS J	DATE 1/5/2009	APPROVED BTR



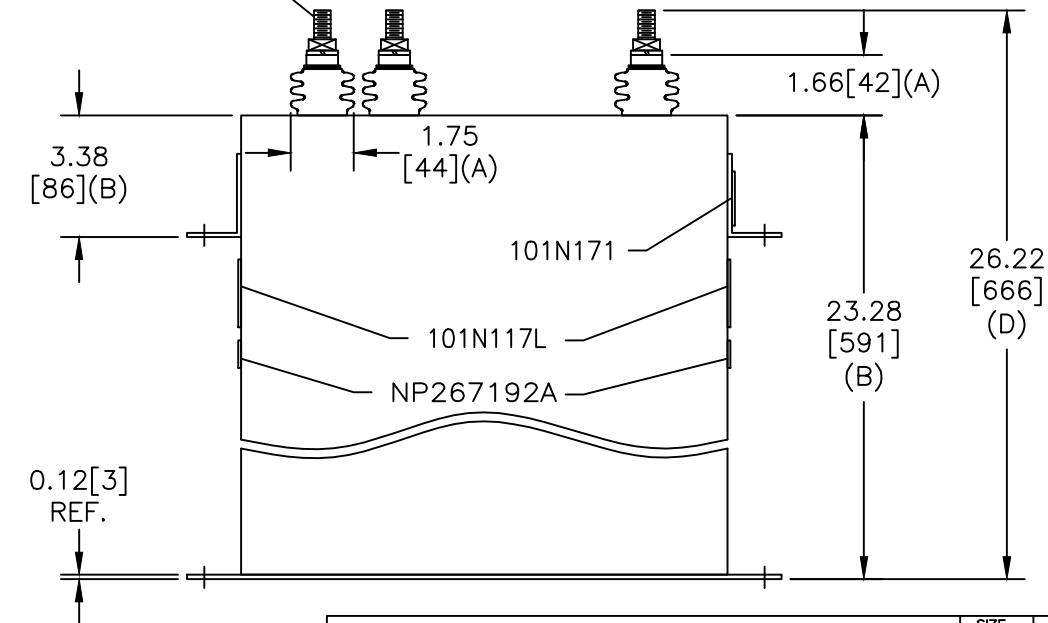
* UP TO +.50 CASE BULGE

TOL	+/-
A	.06
B	.12
C	.18
D	.25
E	.04

TERM	uF	kVAR
1	649.6	120
2	649.6	120



SCHEMATIC DIAGRAM - 217



GE SALEM 278A2178TCP1		
700 V	1 PH	kVBIL
240 KVAR	60 Hz	
CAT 16L0070WH3	SN	
2.5 GAL.		
MFG DATE		
101N171	READ GEH- 2743	

MAX. TERMINAL
TIGHTENING TORQUE
15 FT-LBS

NP267192A

GE ENERGY FORT EDWARD, N.Y., U.S.A.		SIZE A
DRAWN E. McGinn	DATE 11/3/1997	SCALE
ISSUED	DATE 11/5/1997	

OUTLINE
16L0070WH3

SHEET 2 CONT ON 3

DISTR. TO