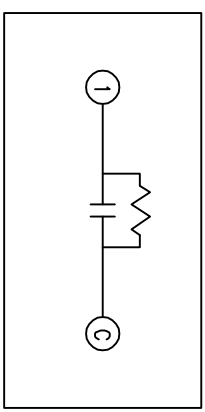
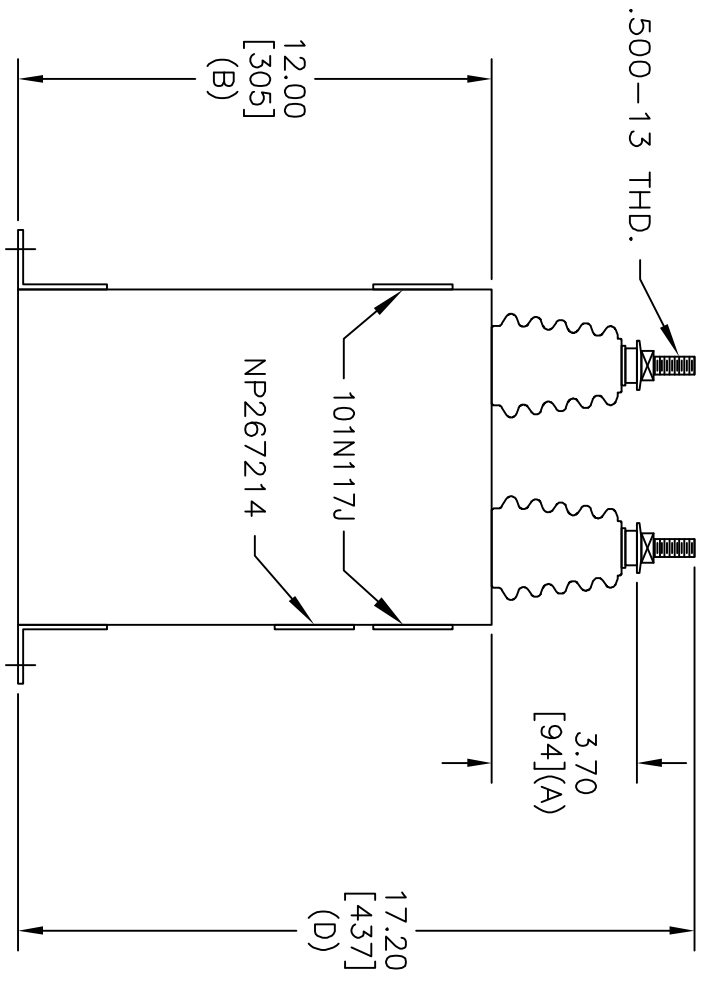
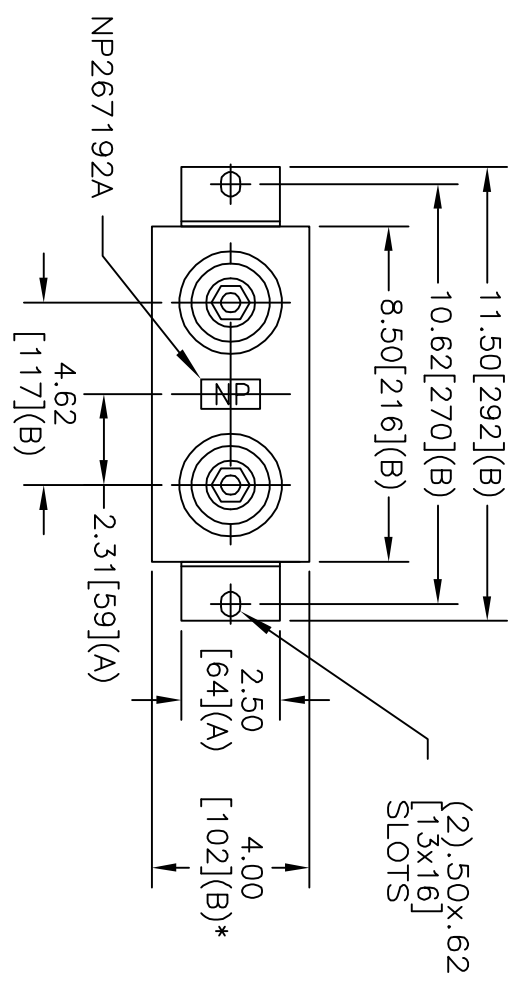


SIZE	DWG NO	SHT	REV
A	16L0076WH3	2	4
REV	DESCRIPTION	DATE	APPROVED
4	RE-ISSUE	11/23/05	BTR



SCHEMATIC DIAGRAM - 102

WITH INTERNAL DISCH RESISTORS  
 CAT. 16L0076WH3 SN  
 79.17KVAR 5000V 60HZ 8.4UF  
 1.00 GAL. COMBUSTIBLE LIQUID  
 CAUTION! BEFORE INSTALLING OR  
 OPERATING READ GEH-2743  
 NP267214

\* UP TO +.50  
 CASE BULGE

MAX. TERMINAL  
 TIGHTENING TORQUE  
 15 FT-LBS

NP267192A

<b>GE ENERGY</b> FORT EDWARD, N.Y., U.S.A.		SIZE	A
DRAWN	E. McGinn	DATE	DEC 19, 1996
ISSUED		DATE	1/8/97
		SCALE	
		SHEET	2
		CONT	3
		ON	

**OUTLINE**  
 16L0076WH3