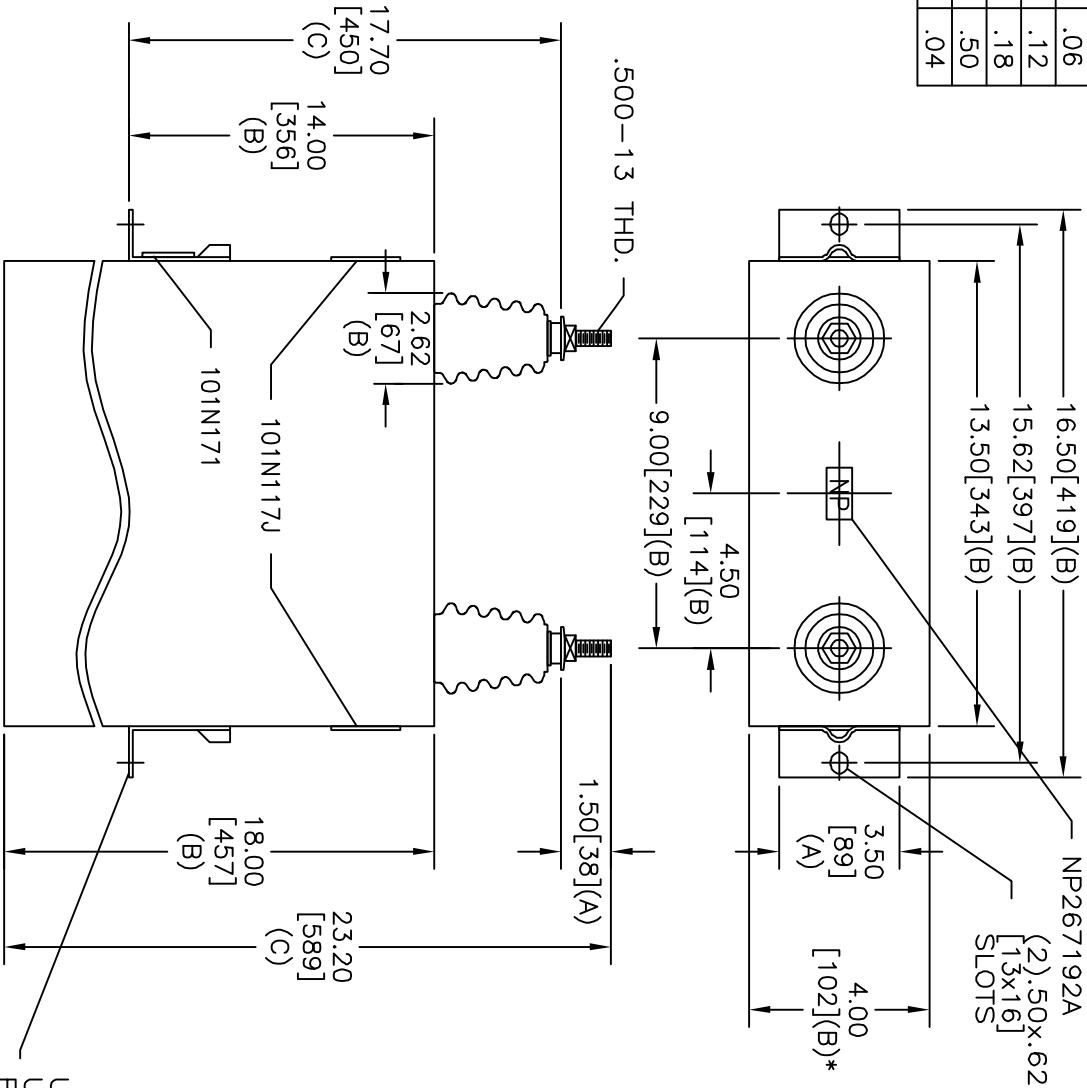
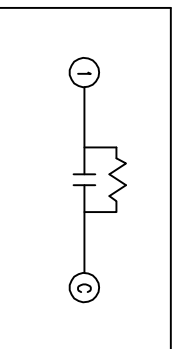


| TOL | +/- |
|-----|-----|
| A   | .06 |
| B   | .12 |
| C   | .18 |
| D   | .50 |
| E   | .04 |



UNPAINTED AREA  
UNDER BOTH  
BRACKETS FOR  
GROUNDING



SCHEMATIC DIAGRAM - 102

|         |            |          |
|---------|------------|----------|
| 2700V   | 1 PH       | KVBIL    |
| 150     | KVAR       | 60 HZ    |
| CAT     | 16L0082WH3 | SN       |
|         | 1.40 GAL.  |          |
| 101N171 | MFG DATE   |          |
|         | READ       | GEH-2743 |

| SIZE | DWG NO      | SHT  | REV      |
|------|-------------|------|----------|
| A    | 16L0082WH3  | 2    |          |
| REV  | DESCRIPTION | DATE | APPROVED |

MAX. TERMINAL  
TIGHTENING TORQUE  
15 FT-LBS  
NP267192A

INDUSTRIAL SYSTEMS  
FORT EDWARD, N.Y., U.S.A.

DRAWN B. ROSS  
ISSUED

DATE 8/30/04

SIZE A  
SCALE

OUTLINE  
16L0082WH3

SHEET 2 CONT 3

DISTR. TO