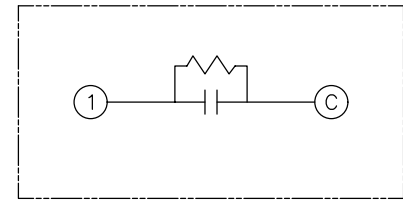
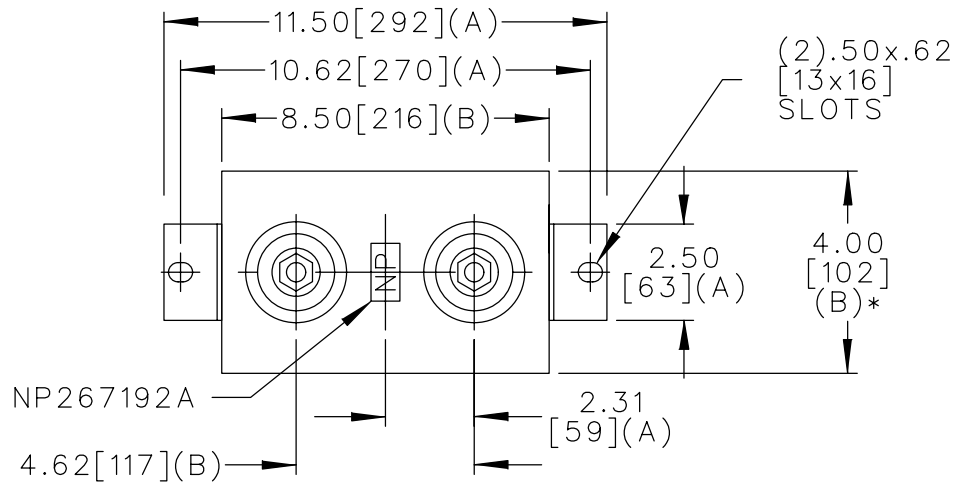
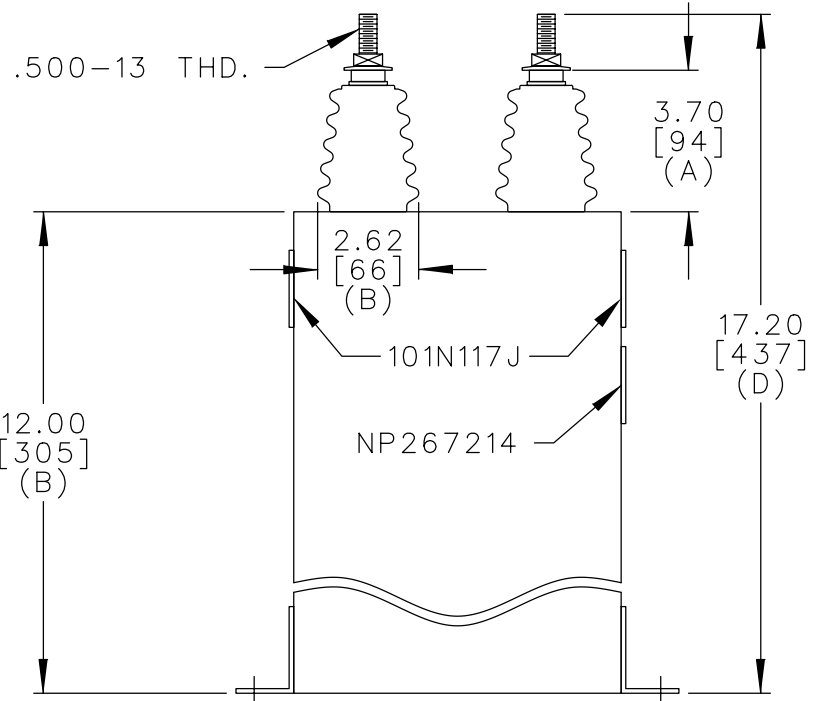


SIZE <b>A</b>	DWG NO. 16L0084WH3	SH 2	REV
REV			

TOL	+/-
A	.06
B	.12
C	.18
D	.04



SCHEMATIC DIAGRAM - 102



WITH INTERNAL DISCH RESISTORS  
 CAT. 16L0084WH3 SN  
 69.27KVAR 5000V 60HZ 7.35UF  
 1.0 GAL. COMBUSTIBLE LIQUID  
 CAUTION! BEFORE INSTALLING  
 OR OPERATING READ GEH2743  
 NP267214

\* UP TO +.50  
CASE BULGE

MAX. TERMINAL  
TIGHTENING TORQUE  
15 FT-LBS

NP267192A

	CAPACITOR & POWER PROTECTION FORT EDWARD, N.Y., U.S.A.		SIZE <b>A</b>	FSCM NO	<b>OUTLINE</b> <b>16L0084WH3</b>	DISTR TO
	DRAWN E.McGINN	FEB. 4, 1998	SCALE	SHEET 2 CONT ON 3		