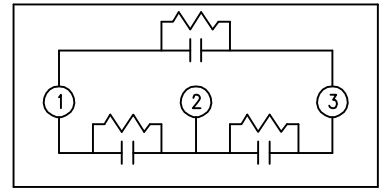
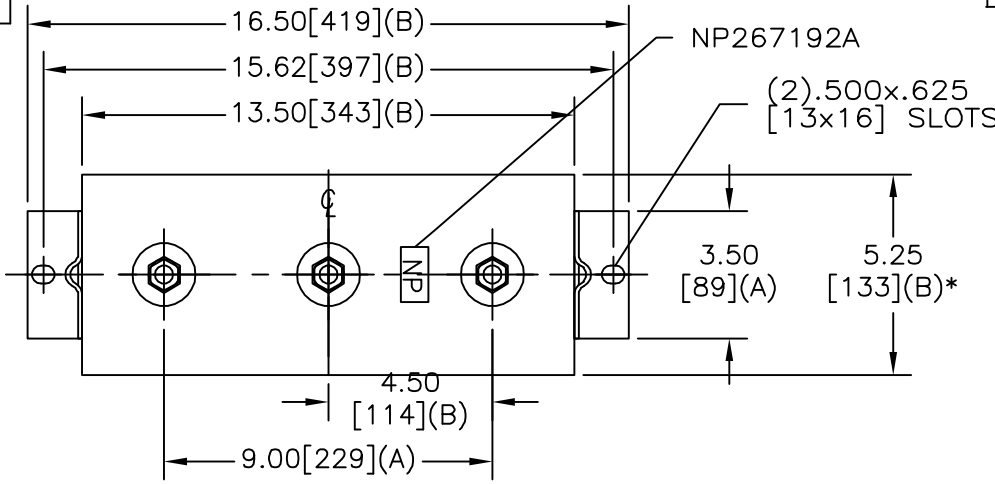
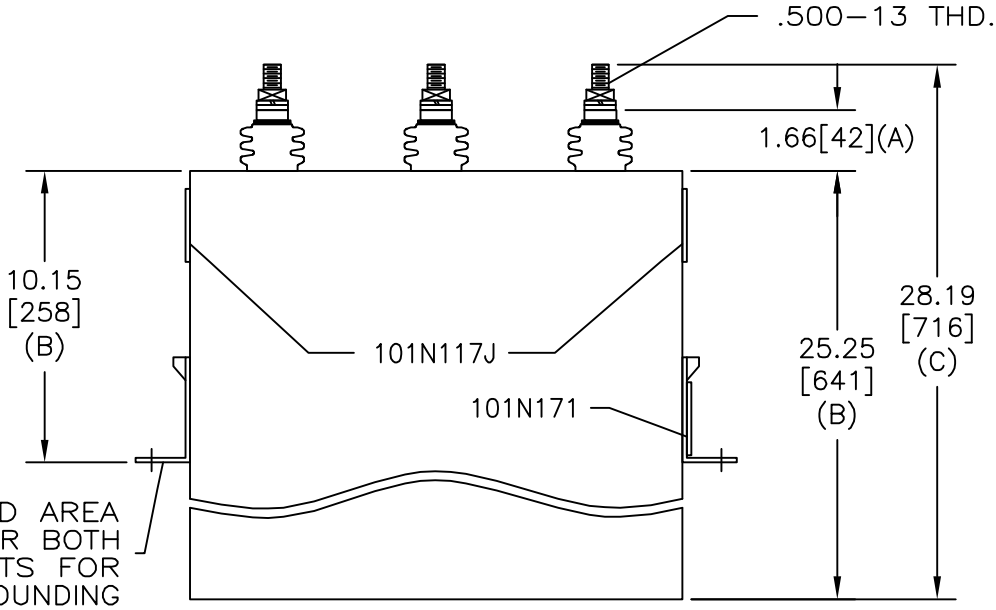


SIZE A	DWG NO 16L0089WH3	SHT 2	REV
REV	DESCRIPTION	DATE	APPROVED

TOL	+/-	BUSH. DIA.
A	.06	1.75[44](B)
B	.12	
C	.18	
D	.50	
E	.04	



SCHMATIC DIAGRAM - 302



UNPAINTED AREA UNDER BOTH BRACKETS FOR GROUNDING

RHCC 0000-6918-77
 660V 3 PH DELTA KVBL
 200 KVAR 60 Hz
 CAT 16L0089WH3 SN
 2.70 GAL.
 MFG DATE
 101N171 READ GEH- 2743

* UP TO +.50[13] CASE BULGE

MAX. TERMINAL TIGHTENING TORQUE 15 FT-LBS

NP267192A

INDUSTRIAL SYSTEMS FORT EDWARD, N.Y., U.S.A.	SIZE A	<h1>OUTLINE</h1> <h2>16L0089WH3</h2>	
	SCALE		
DRAWN B. ROSS DATE SEP19, 2002	ISSUED DATE	SHEET 2	CONT ON 3

DISTR. TO