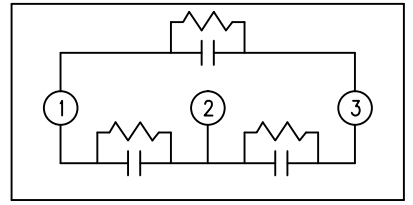
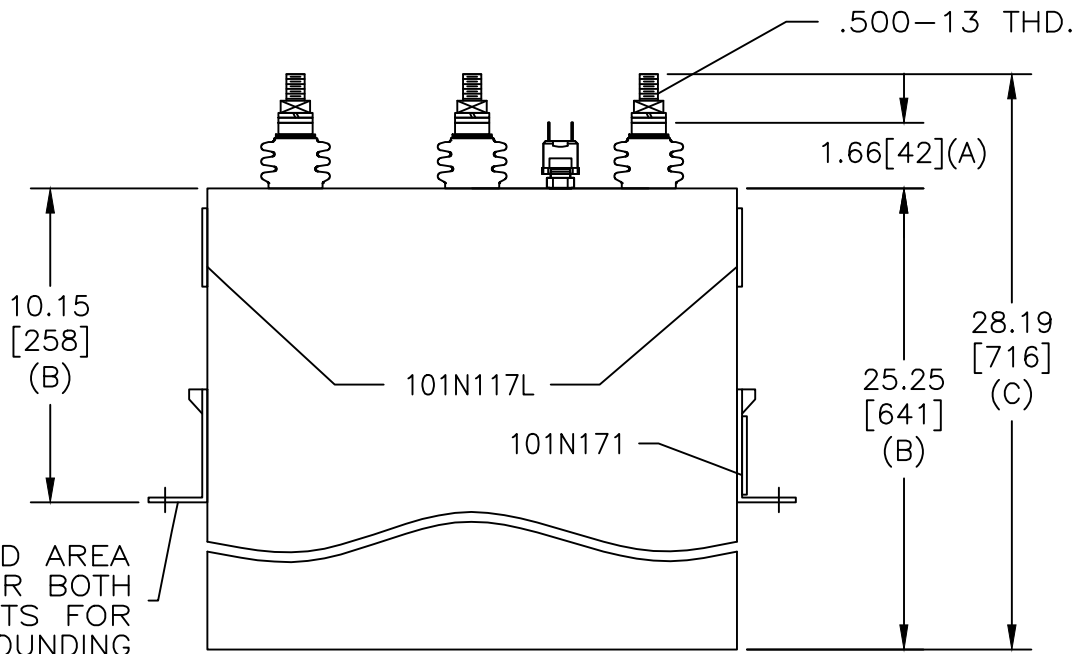
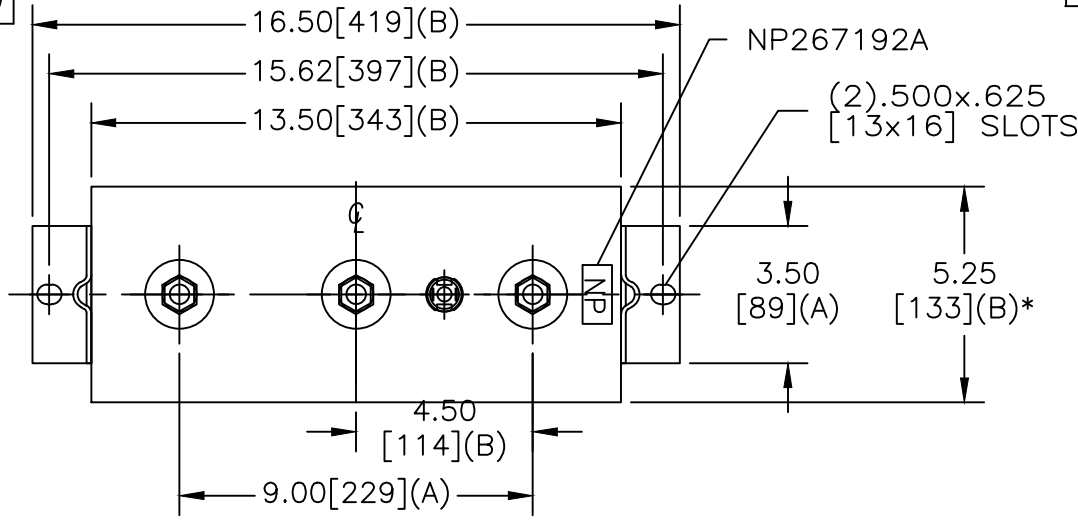


SIZE A	DWG NO 16L0089WH4	SHT 2	REV 1
REV 1	DESCRIPTION UPDATE LINE 1 OF NP	DATE 11/21/11	APPROVED DMR

TOL	+/-	BUSH. DIA.
A	.06	1.75[44](B)
B	.12	
C	.18	
D	.50	
E	.04	



SCHEMATIC DIAGRAM - 302

RHCC 0000-6918-77
660V 3 PH DELTA KVBIL
200 KVAR 60 Hz
CAT 16L0089WH4 SN
2.70 GAL.
MFG DATE
101N171 READ GEH- 2743

* UP TO +.50[13] CASE BULGE

MAX. TERMINAL TIGHTENING TORQUE 15 FT-LBS

NP267192A

GE ENERGY FORT EDWARD, N.Y., U.S.A.		SIZE A
DRAWN B. ROSS	DATE 4/6/2010	SCALE
ISSUED	DATE	

OUTLINE
16L0089WH4

SHEET 2 CONT ON 3

DISTR. TO