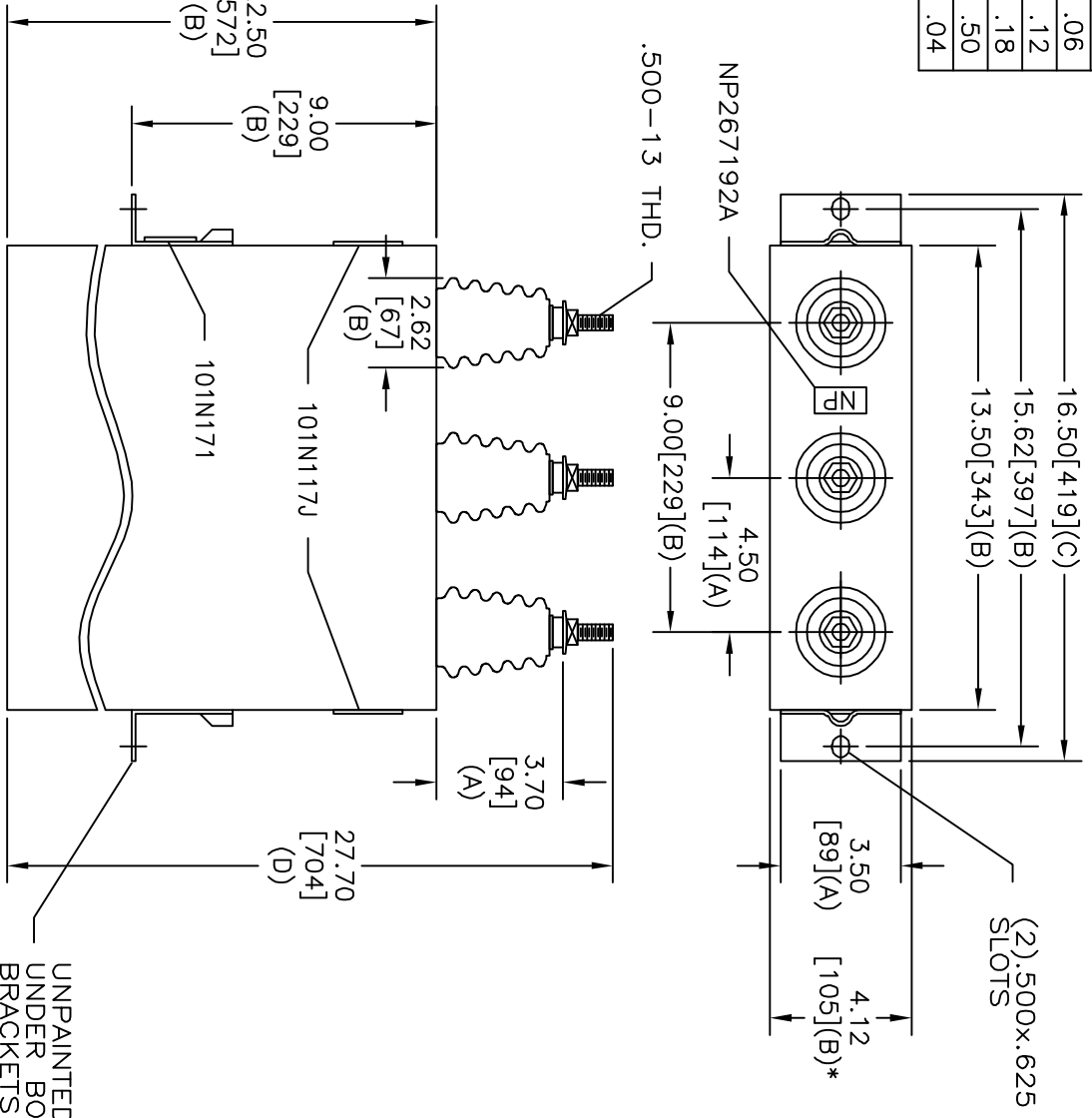
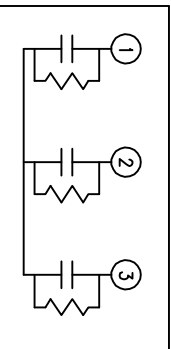


TOL	+/-
A	.06
B	.12
C	.18
D	.50
E	.04

* UP TO +.50[13]
CASE BULGE



SIZE	DWG NO	SHT	REV
A	16L0091WH3	2	
REV	DESCRIPTION	DATE	APPROVED



SCHEMATIC DIAGRAM - 337

RHC 0000-6919-50	KVBIL
2400 V	3 PH
200 KVAR	60 Hz
CAT 16L0091WH3	SN
1.70 GAL.	
101N171	MFG DATE
	READ GEH-2743

UNPAINTED AREA
UNDER BOTH
BRACKETS FOR
GROUNDING

MAX. TERMINAL
TIGHTENING TORQUE
15 FT-LBS
NP267192A

INDUSTRIAL SYSTEMS FORT EDWARD, N.Y., U.S.A.	
DRAWN B. ROSS	DATE JAN 29, 2004
ISSUED	DATE 2/3/04

SIZE	SCALE	SHEET	CONT
A		2	3
OUTLINE 16L0091WH3			

DISTR. TO