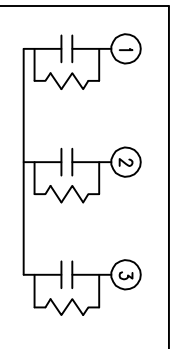
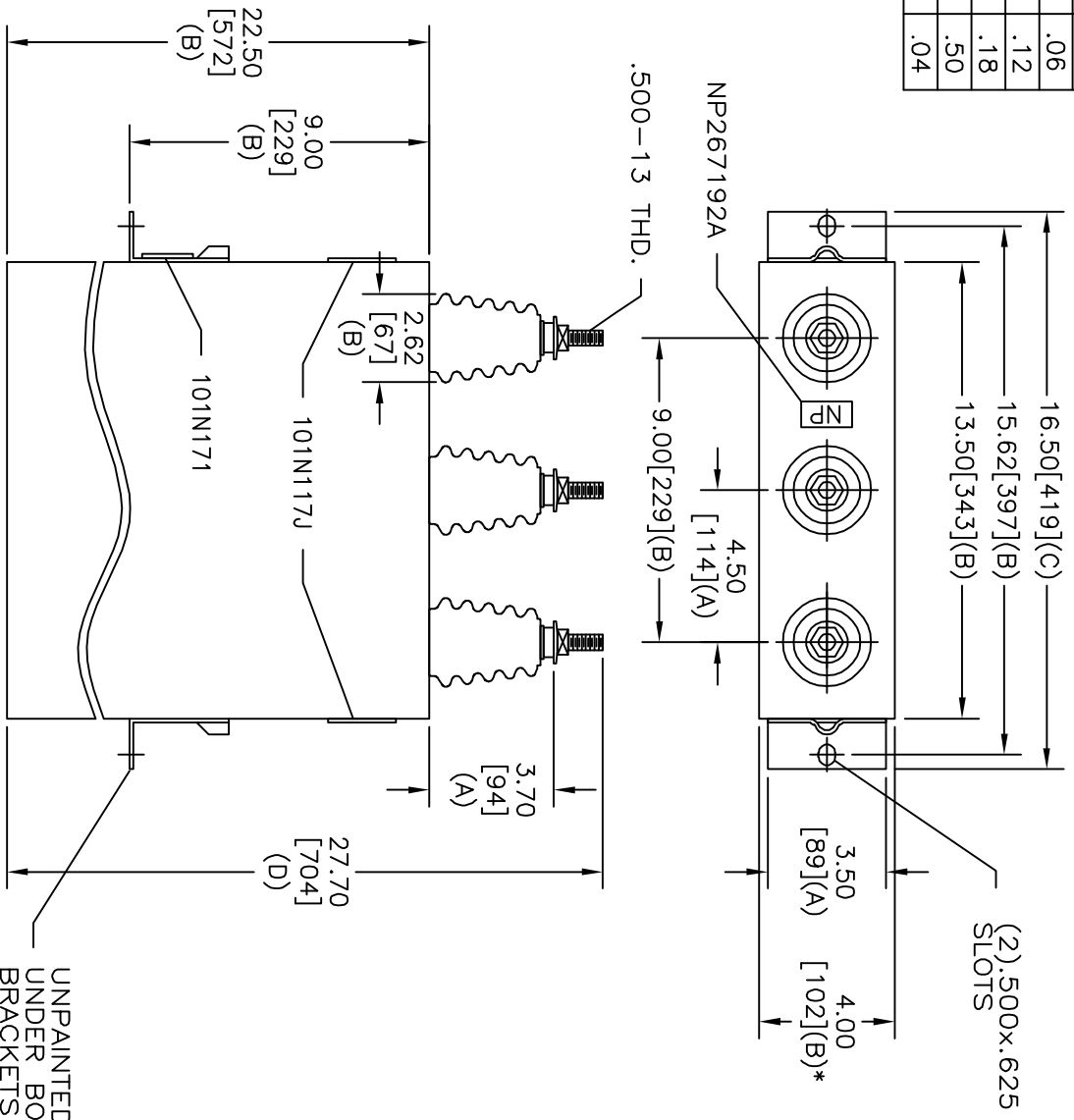


TOL	+/-
A	.06
B	.12
C	.18
D	.50
E	.04

* UP TO +.50[13]
CASE BULGE



SCHEMATIC DIAGRAM - 337

RHC 0000-6919-51	KVBIL
2770 V	3 PH
200 KVAR	60 Hz
CAT 16L0092WH3	SN
1.60 GAL.	
101N171	MFG DATE
	READ GEH-2743

SIZE	DWG NO	SHT	REV
A	16L0092WH3	2	
REV	DESCRIPTION	DATE	APPROVED

MAX. TERMINAL
TIGHTENING TORQUE
15 FT-LBS
NP267192A

INDUSTRIAL SYSTEMS
FORT EDWARD, N.Y., U.S.A.
DRAWN B. ROSS
DATE MAR 16, 2004
ISSUED DATE 4/7/04

SIZE A
SCALE

OUTLINE
16L0092WH3
SHEET 2 CONT 3

DISTR. TO