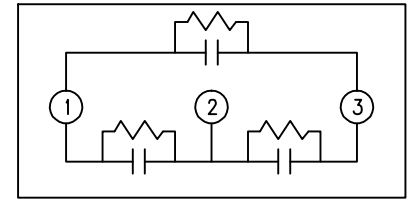
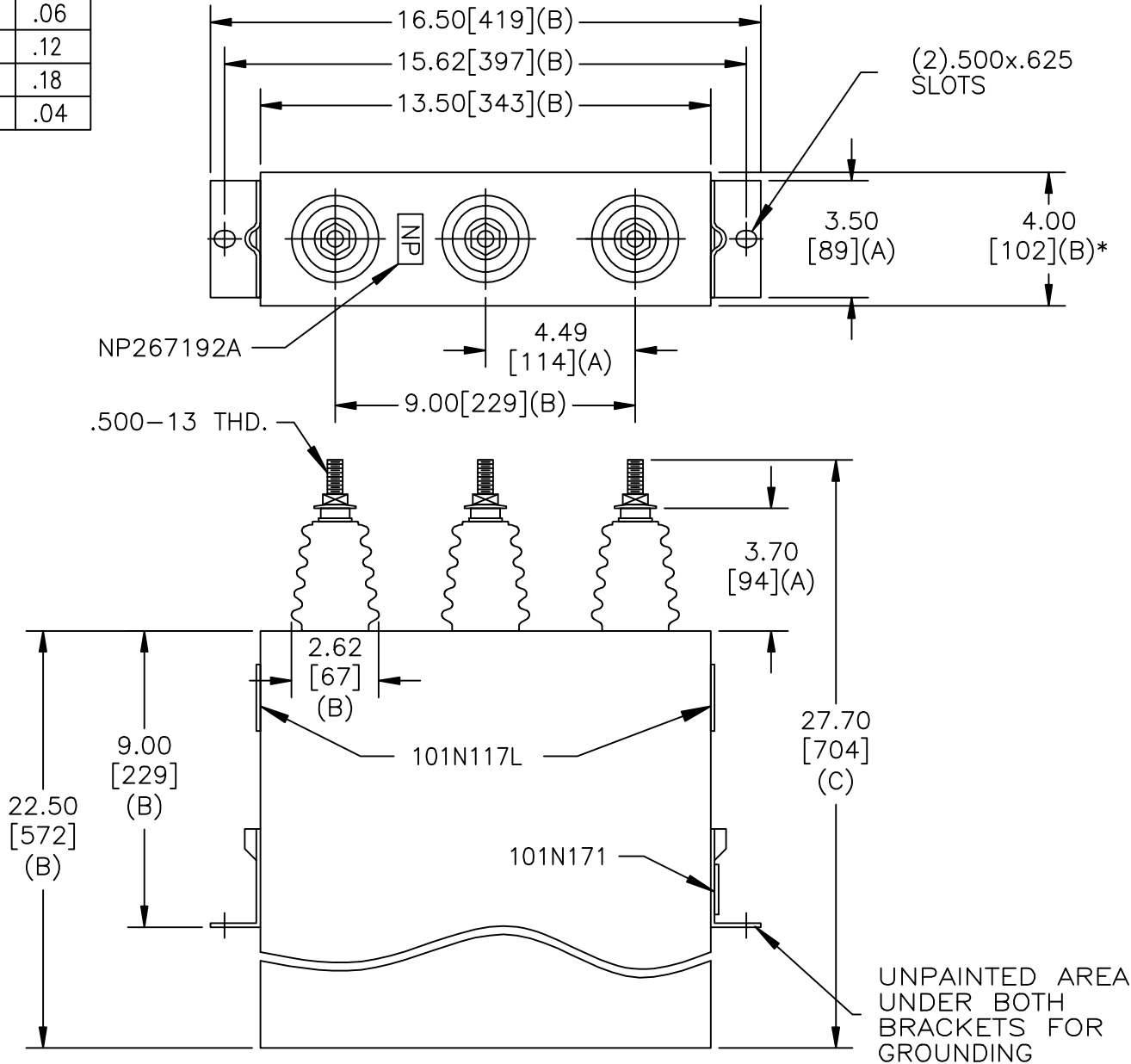


| | | | |
|-----------|-------------------------|----------|----------|
| SIZE A | DWG NO 16L0094WH3037 | SHT 2 | REV |
| REV | DESCRIPTION | DATE | APPROVED |

| | |
|-----|-----|
| TOL | +/- |
| A | .06 |
| B | .12 |
| C | .18 |
| D | .04 |



SCHEMATIC DIAGRAM - 302

RHC 0000-6919-53
 4800V 3 PH KVBIL
 200 KVAR 60 HZ
 CAT. 16L0094WH3037
 1.6 GAL.
 MFG DATE
 101N171 READ GEH-2743

UNPAINTED AREA
 UNDER BOTH
 BRACKETS FOR
 GROUNDING

* UP TO +.50 [13]
 CASE BULGE

MAX. TERMINAL
 TIGHTENING TORQUE
 15 FT-LBS

NP267192A

| | | | | |
|---|-------------------|-----------|---|-----------|
| GE ENERGY FORT EDWARD, N.Y., U.S.A. | | SIZE A | <h1>OUTLINE</h1> <h2>16L0094WH3037</h2> | |
| DRAWN B.Ross | DATE 11/6/2008 | SCALE | | |
| ISSUED | DATE 11/6/2008 | SHEET 2 | | CONT ON 3 |

DISTR. TO