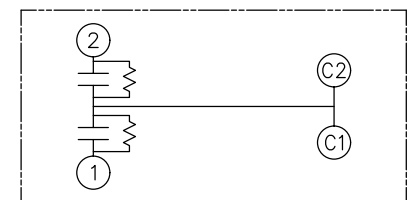
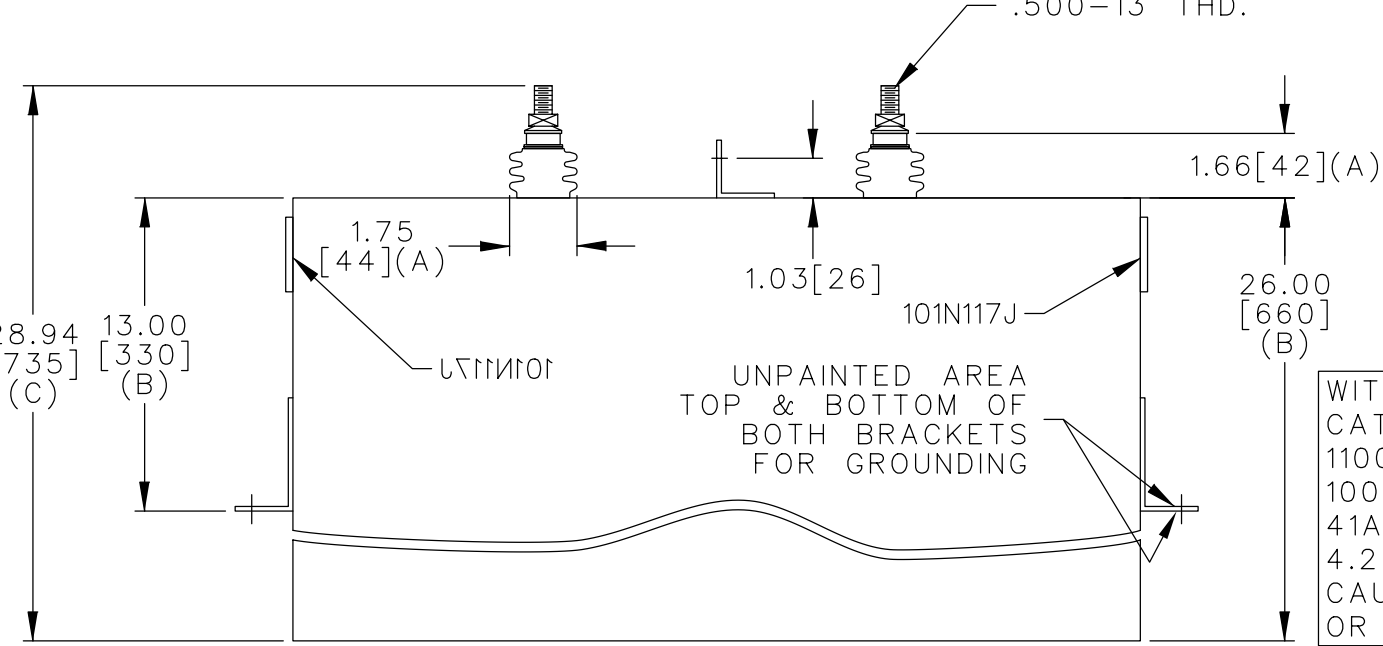
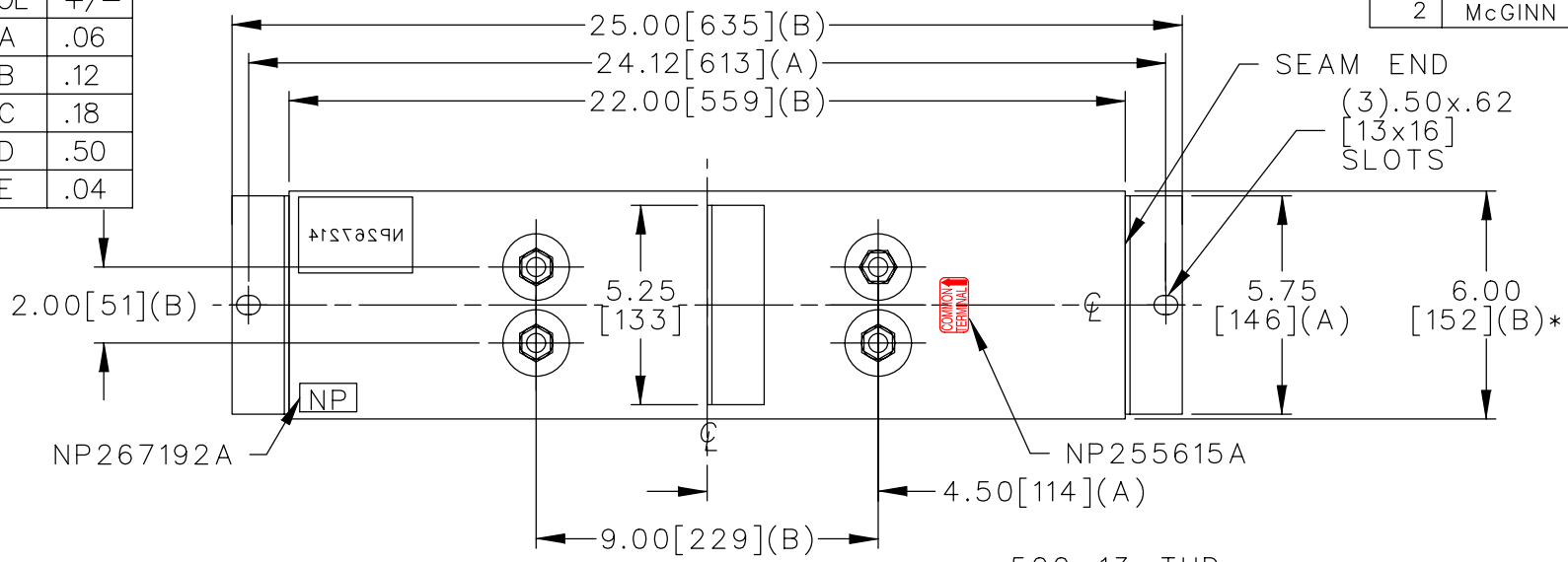


TOL	+/-
A	.06
B	.12
C	.18
D	.50
E	.04



SCHEMATIC DIAGRAM - 207

WITH INTERNAL DISCH RESISTORS  
 CAT. 16L0104WH3 SN  
 1100VAC HZ 1PH  
 1000UF 600ARMS  
 41A296302BXP1  
 4.2 GAL. COMBUSTIBLE LIQUID  
 CAUTION! BEFORE INSTALLING  
 OR OPERATING READ GEH-2743

NP267214

\* UP TO +.75 [19]  
 CASE BULGE

MAX. TERMINAL  
 TIGHTENING TORQUE  
 15 FT-LBS

NP267192A

	CAPACITOR & POWER PROTECTION FORT EDWARD, N.Y., U.S.A.	
	DRAWN E. McGINN	SEPT. 24, 1997
ISSUED	10-1-97	SCALE

SIZE <b>A</b>	EST. WT. 189 LB.
SHEET 2 CONT. 3	

OUTLINE <b>16L0104WH3</b>
DISTR TO