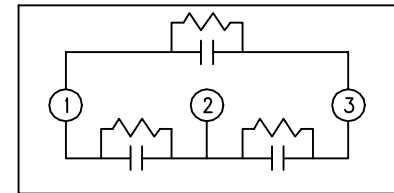
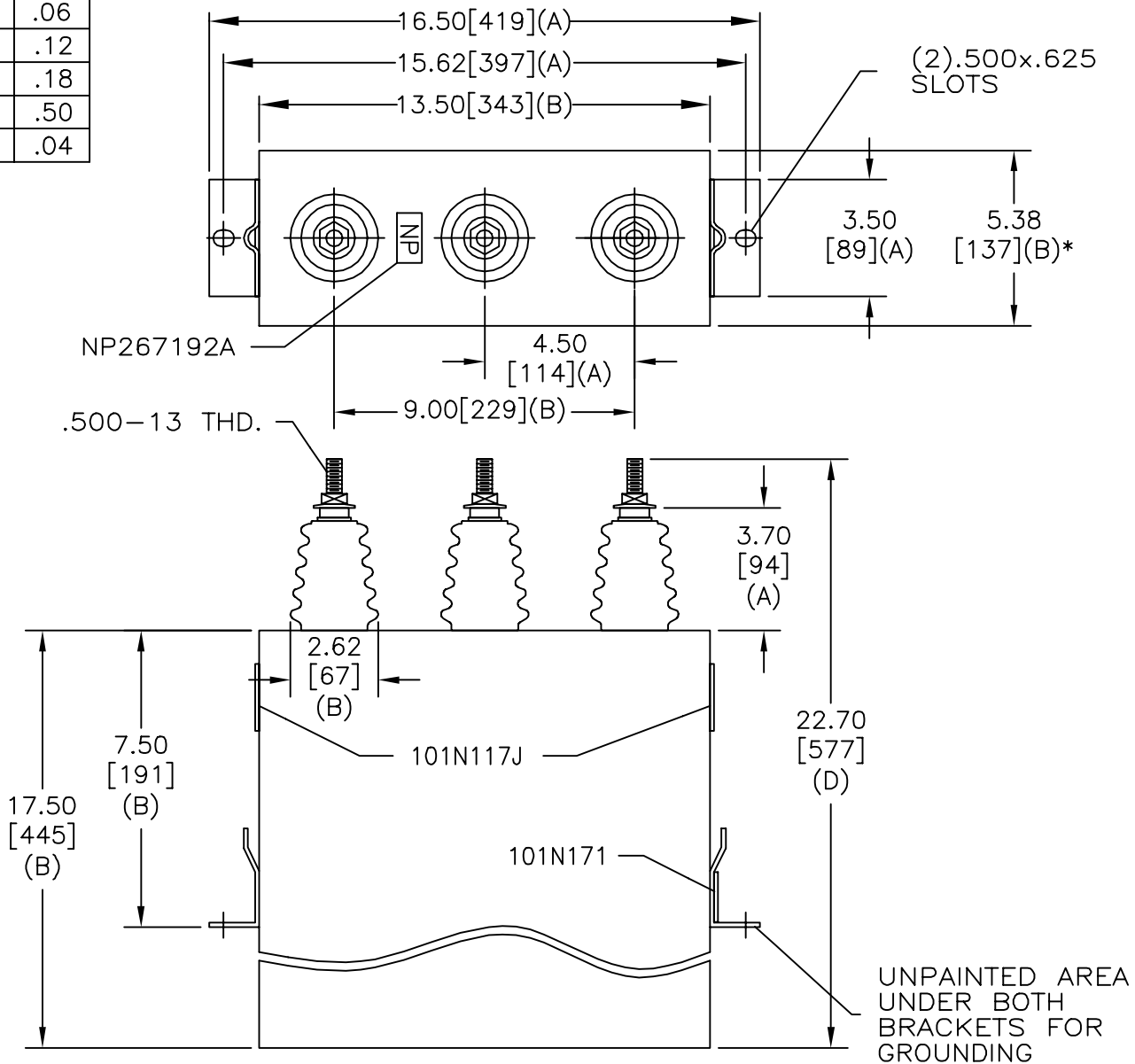


TOL	+/-
A	.06
B	.12
C	.18
D	.50
E	.04

SIZE A	DWG NO 16L0110WH3	SHT 2	REV 1
REV 1	DESCRIPTION CHG BKT	DATE 9/3/03	APPROVED BTR



SCHEMATIC DIAGRAM - 302

1000V 1 PH  
 160KVAR 60Hz KVBIL  
 CAT. 16L0110WH3  
 1.8 GAL.  
 MFG DATE  
 101N171 READ GEH-2743

\* UP TO +.50 [13] CASE BULGE

MAX. TERMINAL TIGHTENING TORQUE 15 FT-LBS

NP267192A

INDUSTRIAL SYSTEMS FORT EDWARD, N.Y., U.S.A.		SIZE A	<h1>OUTLINE</h1> <h2>16L0110WH3</h2>	
DRAWN E. McGinn	DATE OCT 30, 2000	SCALE		
ISSUED	DATE 11/1/00		SHEET 2	CONT ON 3

DISTR. TO