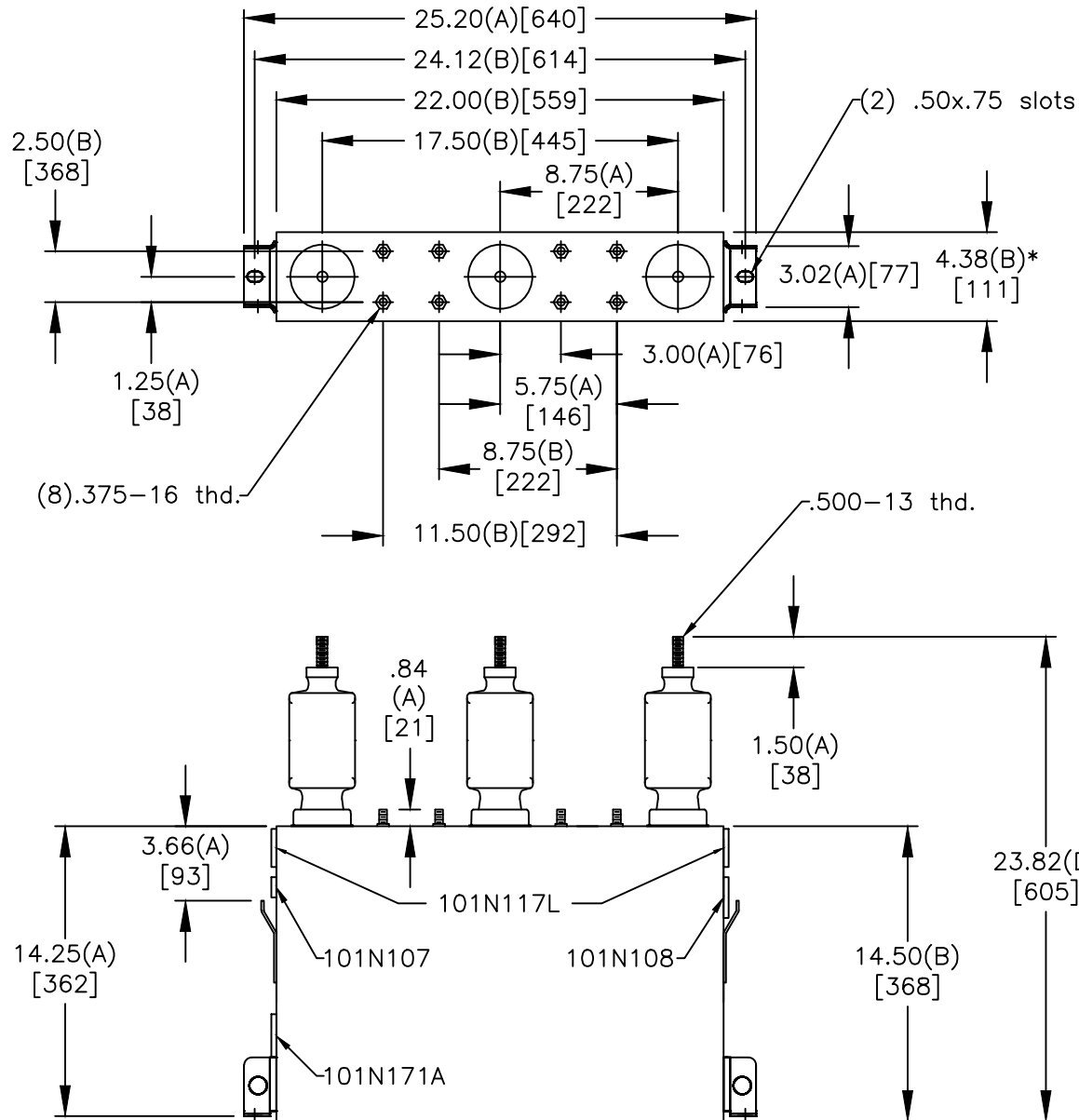
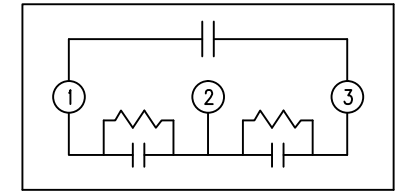


SIZE A	DWG NO 16L0114WH3	SHT 2	REV 2
REV 2	DESCRIPTION case was 4.25	DATE 9/27/2018	APPROVED JBC




TOL	+/-
A	.06
B	.12
C	.18
D	.25

* UP TO +.50 CASE BULGE



SCHEMATIC DIAGRAM - 304




Capacitor

With Dielektrol Fluid
With Internal Discharge Resistors

Volt. 6600	PH 3	kVBIL 95
kVAr 50	Hz 50	Mea.
Cat. 16L0114WH3		SN.
DELTA CONN		

Contains 2.4 Gal. Combustible Liquid with less than one part per million PCB on MFG date:
CAUTION! Before installing or operating Read GEH- 2743
101N171A Clearwater, Florida USA

	GE POWER Clearwater, Florida USA	
	DRAWN E. McGinn	DATE 7/20/1999
	ISSUED	DATE 7/21/1999

SIZE A	OUTLINE 16L0114WH3
SCALE	SHEET 2 CONT ON 3

DISTR. TO