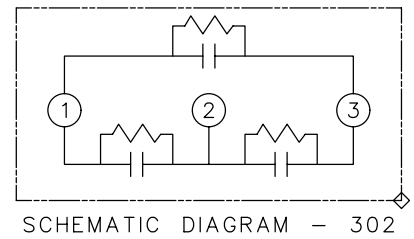
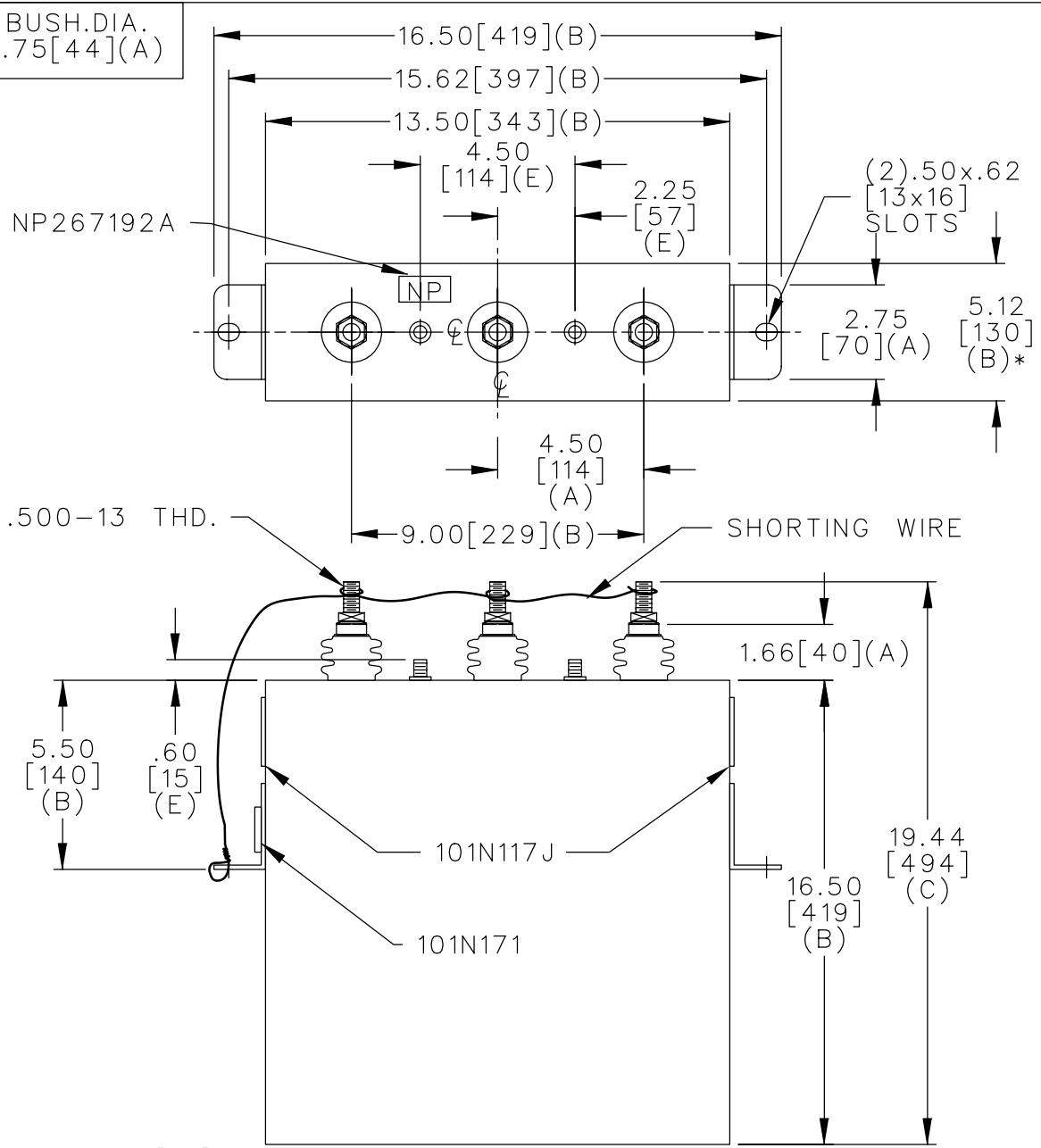


SIZE <b>A</b>	DWG NO. 16L0120WH3	SH 2	REV
REV 1	McGINN ADD SHORTING WIRE		

TOL	+/-	BUSH.DIA.
A	.06	1.75[44](A)
B	.12	
C	.18	
D	.25	
E	.03	



600V 3PH  
 100KVAR 60HZ 30KVBIL  
 CAT. 16L0120WH3 NO.  
 1.6 GAL.  
 MFG DATE  
 GEH-2743

101N171

\* UP TO +.50[13] CASE BULGE

MAX. TERMINAL TIGHTENING TORQUE 15 FT-LBS

NP267192A

	CAPACITOR & POWER PROTECTION FORT EDWARD, N.Y., U.S.A.		SIZE <b>A</b>	FSCM NO	<b>OUTLINE</b> <b>16L0120WH3</b>	SHEET 2 CONT 3
	DRAWN E.McGINN	APR. 28, 1997	SCALE	DISTR TO		
ISSUED	10-30-96					