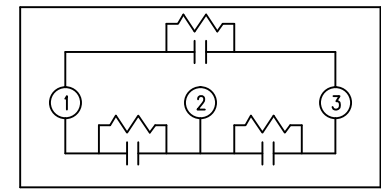
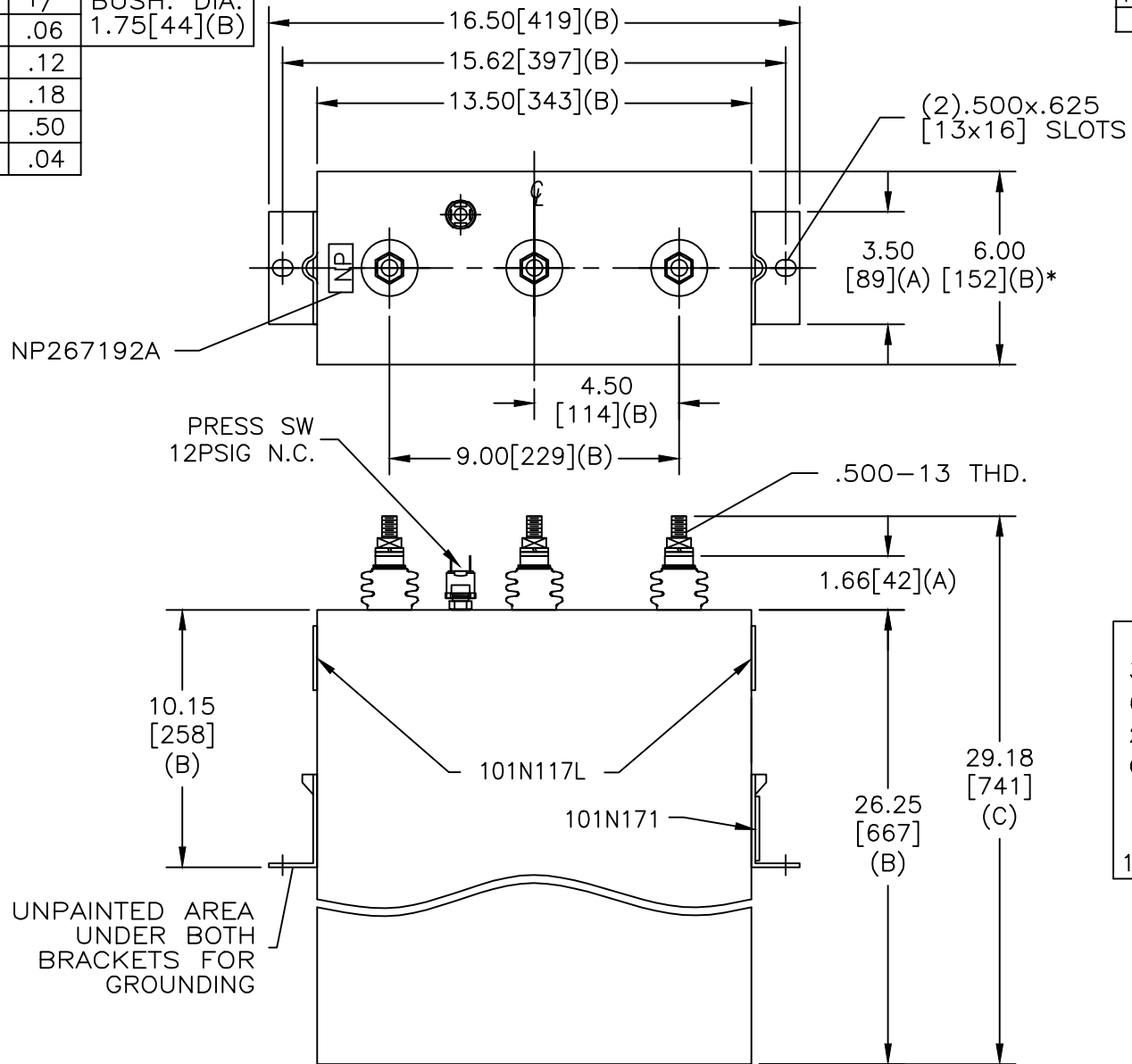


SIZE A	DWG NO 16L0123WH4	SHT 2	REV
REV	DESCRIPTION	DATE	APPROVED

TOL	+/-	BUSH. DIA.
A	.06	1.75[44](B)
B	.12	
C	.18	
D	.50	
E	.04	



SCHEMATIC DIAGRAM - 302

3 X 487 UF
 660 V 3 PH kVBIL
 200 KVAR 50 Hz
 CAT 16L0123WH4 SN
 2.97 GAL.
 MFG DATE
 101N171 READ GEH- 2743

UNPAINTED AREA UNDER BOTH BRACKETS FOR GROUNDING

* UP TO +.50[13] CASE BULGE

MAX. TERMINAL TIGHTENING TORQUE 15 FT-LBS
 NP267192A

GE ENERGY FORT EDWARD, N.Y., U.S.A.		SIZE A
DRAWN B. ROSS	DATE JUL 30, 2003	SCALE
ISSUED	DATE 8/22/2012	

<h1>OUTLINE</h1> <h2>16L0123WH4</h2>	
SHEET 2	CONT ON 3

DISTR. TO